



Lingfield Crescent, Stratford-Upon-Avon, CV37 9LX

**SHELDON
BOSLEY
KNIGHT**

LAND AND
PROPERTY
PROFESSIONALS

Property Description

Within 1 Mile Of Town Centre

Located on the fringe of Stratford Town Centre within a highly sought-after development, this link semi-detached home offers an excellent opportunity for first-time buyers, investors, or those looking for a convenient lock-up-and-leave property.

The home occupies a generous plot and features a welcoming entrance hallway that leads into a spacious lounge and dining area. This room benefits from a handy under-stairs storage cupboard and patio doors that open onto the rear garden. The kitchen is well-appointed and also provides access to the garden, while a downstairs WC adds to the overall practicality of the layout.

Upstairs, there are three well-proportioned bedrooms, two of which include built-in storage, along with a modern refitted family bathroom.

Externally, the property offers a large carport with a garage-style front door, giving added privacy and flexible use. The rear garden is designed to be low maintenance, making it ideal for those with busy lifestyles.

Offered for sale with no onward chain, this property combines comfort, space, and a prime location, making it a must see.





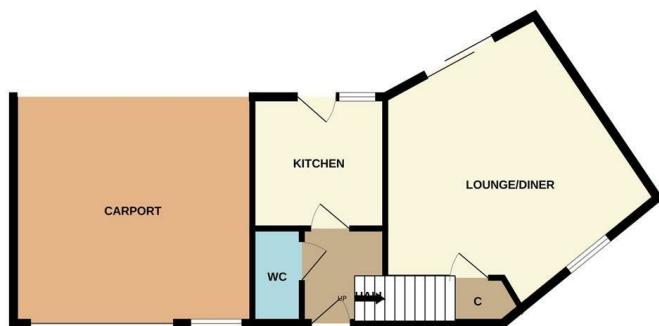
Key Features

- Popular Development
- Within 1 Mile Of Stratford Town Centre
- Link Semi Detached Home
- 3 Bedrooms
- Lounge Diner
- Refitted Bathroom
- Plenty Of Storage Throughout
- Large Car Port With Garage Door Front
- Low Maintenance Rear Garden
- No Onward Chain

**Offers Over
£350,000**



GROUND FLOOR



1ST FLOOR



This floor plan is not to scale and is for guidance purposes only
Made with Metropix ©2025



EPC Rating - C

Tenure - Freehold

Council Tax Band - D

Local Authority
Stratford Upon Avon



We routinely refer clients to both our recommended legal firm and a panel of financial services providers. It is your decision whether you choose to deal with these companies. In making that decision, you should know that we receive a referral fee.

**SHELDON
BOSLEY
KNIGHT**

LAND
AND
PROPERTY
PROFESSIONALS