



Bell Lane, Stratford-Upon-Avon, CV37 9HF

**SHELDON
BOSLEY
KNIGHT**

LAND AND
PROPERTY
PROFESSIONALS

Property Description

Prime Shotton Location

Situated in the heart of Shotton, this detached bungalow offers an ideal combination of comfort and convenience.

The property features a spacious lounge/diner, enhanced by patio doors leading to a private garden, and a well-appointed breakfast kitchen with direct outdoor access. The master bedroom benefits from a newly re-fitted en-suite, while two additional double bedrooms are served by a re-fitted shower room.

The rear garden is fully enclosed and beautifully established, housing a generously sized workshop with both power and lighting. To the front, the property is complemented by a driveway and garage, providing ample off-road parking.

Located in an area rich in Shakespearian heritage, Shotton offers excellent access to the amenities of Stratford-upon-Avon. Stratford Train Station is just a short walk away, offering regular services to Birmingham and beyond. The A46 and M40 are easily accessible, and both Stratford Girls Grammar and Stratford College are within walking distance.



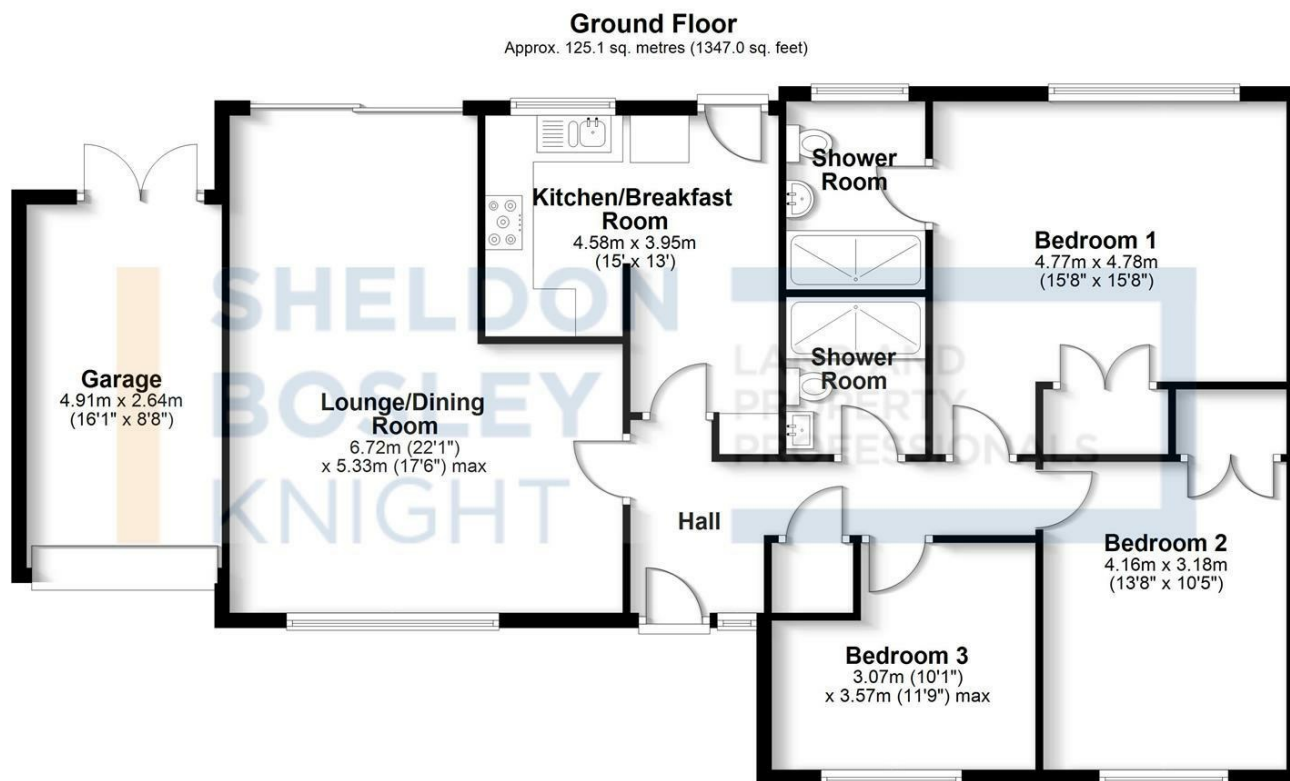


Key Features

- Detached Bungalow
- Highly Sought After Location
- 3 Double Bedrooms
- En-Suite To Bedroom 1
- Re-Fitted Shower Room & En-Suite
- Lounge Diner
- Breakfast Kitchen
- Garage
- Driveway To Front
- Established Enclosed Rear Garden

**Offers Over
£650,000**





Total area: approx. 125.1 sq. metres (1347.0 sq. feet)

All efforts have been made to ensure the measurements are accurate on this floor plan, however these are for guidance purposes only.
Plan produced using PlanUp.



EPC Rating - D

Tenure - Freehold

Council Tax Band - F

Local Authority
Stratford-upon-Avon



We routinely refer clients to both our recommended legal firm and a panel of financial services providers. It is your decision whether you choose to deal with these companies. In making that decision, you should know that we receive a referral fee.

**SHELDON
BOSLEY
KNIGHT**

LAND AND
PROPERTY
PROFESSIONALS