



Cherry Street, Stratford-upon-Avon, CV37 6DF

**SHELDON
BOSLEY
KNIGHT**

LAND AND
PROPERTY
PROFESSIONALS

Property Description

* NO ONWARD CHAIN *

Situated within 0.5 miles of Stratford Town Centre is this terraced home, offering charm and period features throughout.

There are two reception rooms with an opening through to the kitchen, giving a spacious and open plan feel, whilst offering layout versatility. The bathroom is also currently downstairs.

Upstairs there are three good sized bedrooms and a handy separate WC.

To the rear is a generous west facing garden, requiring low maintenance.

This home would make an ideal first time purchase and also lends itself to being a buy to let investment, due to its attractive location.





Key Features

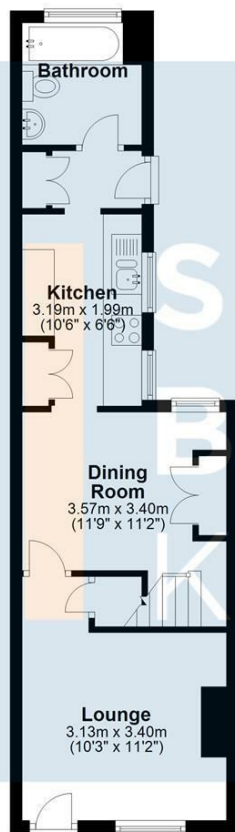
- Central Old Town Location
- Terraced Home
- Three Bedrooms
- Bathroom & Additional WC
- West Facing Rear Garden
- Proven Rental Track Record
- Two Reception Rooms
- Period Features
- No Onward Chain

**Offers Over
£350,000**



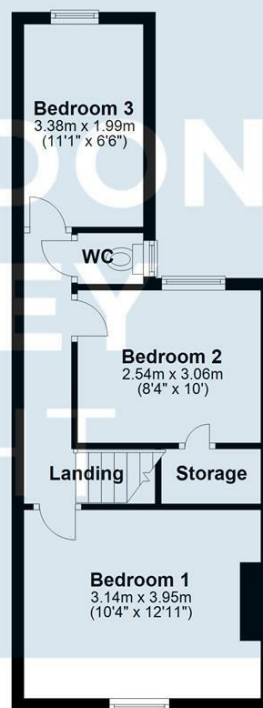
Ground Floor

Approx. 36.1 sq. metres (388.2 sq. feet)



First Floor

Approx. 35.8 sq. metres (384.9 sq. feet)



Total area: approx. 71.8 sq. metres (773.0 sq. feet)

All efforts have been made to ensure that the measurements on this floorplan are accurate however these are for guidance puposes only.
Plan produced using PlanUp.



EPC Rating - D

Tenure - Freehold

Council Tax Band -

Local Authority
Stratford Upon Avon



We routinely refer clients to both our recommended legal firm and a panel of financial services providers. It is your decision whether you choose to deal with these companies. In making that decision, you should know that we receive a referral fee.

**SHELDON
BOSLEY
KNIGHT**

LAND AND
PROPERTY
PROFESSIONALS