



TIDDINGTON COURT

Knights Lane, Stratford-Upon-Avon, CV37 7BP

**SHELDON
BOSLEY
KNIGHT**

LAND AND
PROPERTY
PROFESSIONALS

Property Description

An ideal opportunity to purchase this one bedroom ground floor apartment, available at a retirement development with a focus on maintaining independence with additional support if required. Features include a on-site restaurant, communal relaxation areas, visitor guest suite, laundry room, lift access, landscaped gardens and ample car parking.

The accommodation briefly comprises; secure communal entrance hall, inner lobby serving a internal entrance hall having a built in cupboard. There is a spacious lounge combined dining room, a kitchen having a comprehensive range of white units incorporating a built in oven and hob. There is a spacious double bedroom incorporating built-in wardrobes and having direct access to the communal garden, there is also a nicely appointed fully tiled shower/wet room.

Also a team of staff working on a shift basis, managed 24 hours a day. The monthly service charge covers the costs of external maintenance, buildings insurance, up keep of the grounds and one and half hours of domestic assistance per week per individual apartment.

Tiddington is a very popular village located just over a mile from Stratford-upon-Avon. Internationally famous as the birthplace of William Shakespeare and home to the Royal Shakespeare Theatre, Stratford-upon-Avon attracts almost four million visitors a year. Stratford is also a prosperous riverside market town with fine restaurants and inns, a good choice of public and private schools, and excellent sporting and recreational amenities.





Key Features

- Ground Floor Apartment
- Minimum Age 55
- No Chain
- Weekly Service Clean Included
- Communal Laundry Room
- On-Site Restaurant
- Visitor Guest Suite
- Secure Parking

**Offers Around
£85,000**

EPC Rating - C

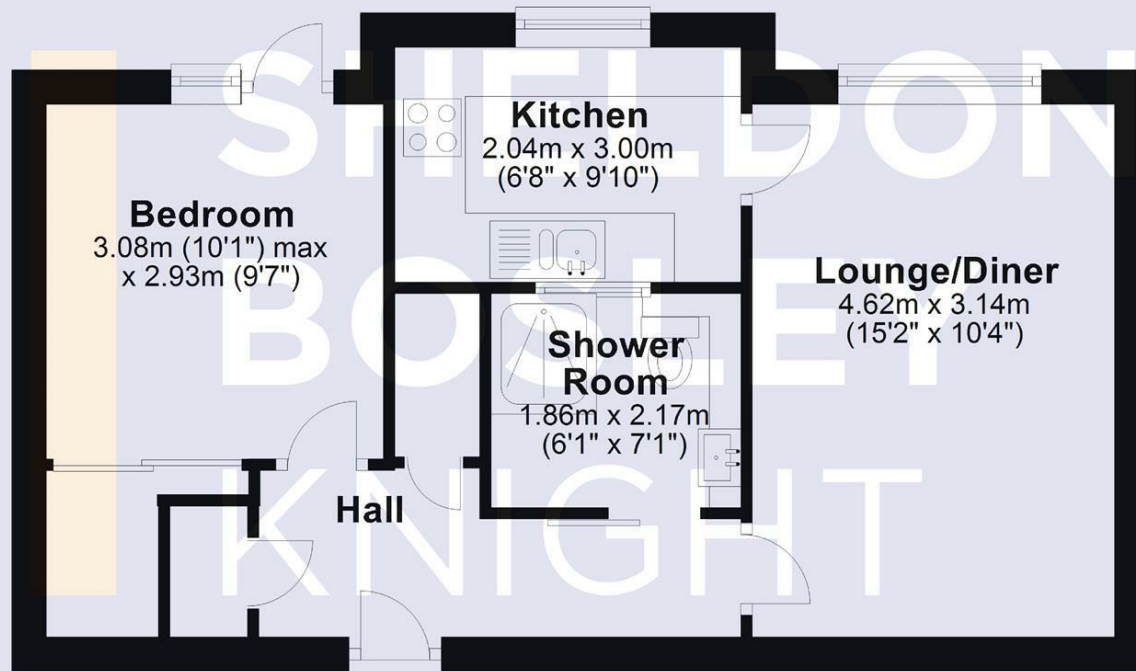
Tenure - Leasehold

Council Tax Band - C

Local Authority -
Stratford-Upon-Avon

Ground Floor

Approx. 44.4 sq. metres (477.5 sq. feet)



Total area: approx. 44.4 sq. metres (477.5 sq. feet)

DISCLAIMER - Floor plans shown are for general guidance only. Whilst every attempt has been made to ensure that the floorplan measurements are as accurate as possible, they are for illustrative purposes only.