



267 Wigan Road

, Leigh, WN7 5DP

£725



Sapphire Homes are delighted to be in a position to offer TO LET this well presented two bedroom mid terraced family home in popular residential location situated close to local schools, amenities and transport links as well as being within walking distance of Leigh Town Centre. The accommodation briefly comprises of good sized living area and to the rear is a fitted dining / kitchen with access to the rear garden. To the first floor there are 2 good sized bedrooms and bathroom with three piece suite in white. The property benefits from a neutral decor throughout, Gas Central Heating and Double Glazing. Externally to the rear is an enclosed patio garden and small garden to the front elevation. Early viewings are highly recommended to appreciate in full. No Pets. No Smokers.



GROUND FLOOR

Entrance / Vestibule

Lounge

Kitchen / Diner

Store Room

FIRST FLOOR

Landing

Bedroom 1

Bedroom 2

Bathroom

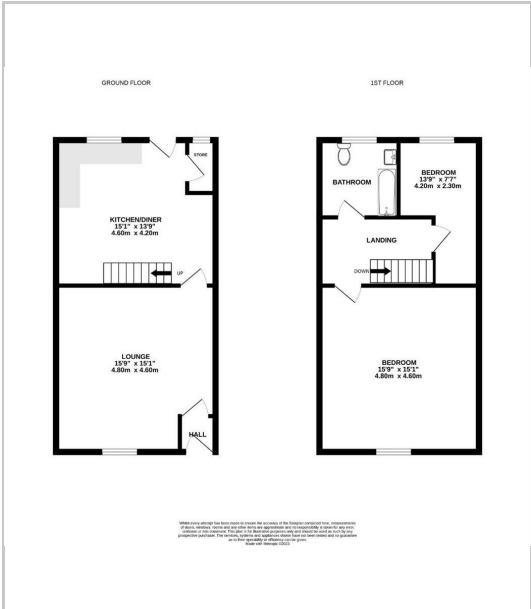
EXTERNAL

Rear Garden

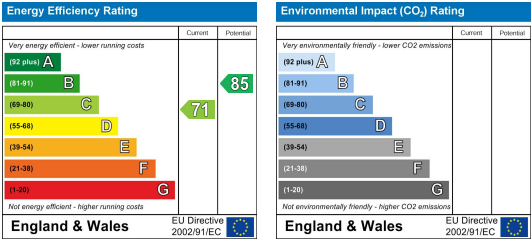
Area Map



Floor Plans



Energy Efficiency Graph



These particulars, whilst believed to be accurate are set out as a general outline only for guidance and do not constitute any part of an offer or contract. Intending purchasers should not rely on them as a representation of fact, but must satisfy themselves by inspection or otherwise as to their accuracy. No person in this firms employment has the authority to make or give any representation or warranty in relation to the property.

