



## 13 Holme Terrace

Swinley, Wigan, WN1 2HH

**£795 PCM**



Sapphire Homes are delighted to offer For Rent this wonderfully presented two bedroom mid terraced property that is located in a popular residential location and offers close proximity to outstanding local schools, amenities and transport links as well as being a brief walk from Wigan Town centre, Wigan Hospital, Mesnes Park and Haigh Hall. The accommodation in brief comprises of entrance / hallway, lounge, brand new modern fitted kitchen / diner with utility / store to the rear elevation with access to the rear garden. To the first floor the landing provides access to two good sized bedrooms and a family bathroom with modern three piece suite in white with shower over bath. The property is warmed by Gas Central Heating and also boasts a newly refreshed modern tasteful décor and UPVC double glazing throughout. Externally, the property is pavement fronted and to the rear there is a patio garden with rear gated access. The property is perfectly suited for professional, couple or small family and early internal viewings are a must to appreciate in full. No Smoking.



GROUND FLOOR

Entrance / Hallway

Lounge

Kitchen / Diner

Rear Utility / Store

FIRST FLOOR

Landing

Bedroom 1

Bedroom 2

Bathroom

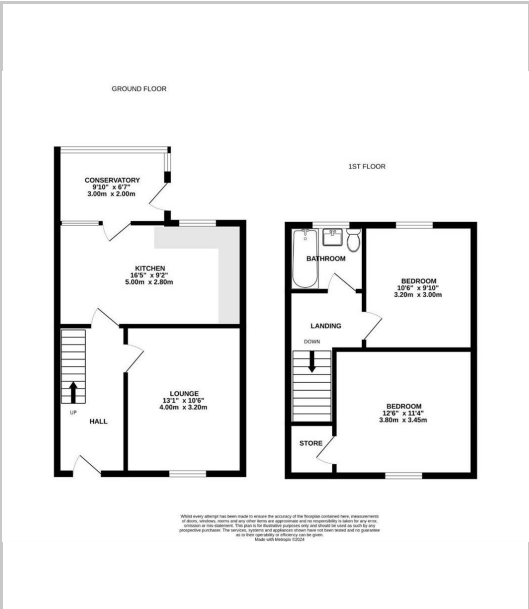
EXTERNAL

Rear Garden

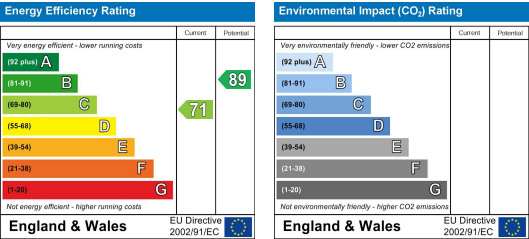
Area Map



Floor Plans



Energy Efficiency Graph



These particulars, whilst believed to be accurate are set out as a general outline only for guidance and do not constitute any part of an offer or contract. Intending purchasers should not rely on the representation of fact, but must satisfy themselves by inspection or otherwise as to their accuracy. No person in this firms employment has the authority to make or give any representation or warranty in relation to the property.

