



21 Adams Drive

Worsley Mesnes, Wigan, WN3 5UH

£795 PCM



Sapphire Homes are delighted to be in a position to offer For Rent this well presented 2 bedroom mid mews in popular residential location that is accessible to local schools, amenities and transport links. The property comprises of entrance / hallway which leads to lounge with through dining area and separate modern fitted kitchen with oven, hob & extractor. To the first floor there are 2 spacious bedrooms and a bathroom with shower over bath. The property is warmed by Gas Central Heating and also benefits from Double Glazing and a neutral decor. Externally there are low maintenance gardens to the front & rear and the property is located in a cul de sac. No Smoking.



GROUND FLOOR

Entrance / Hallway

Lounge

Dining Area

Kitchen

FIRST FLOOR

Landing

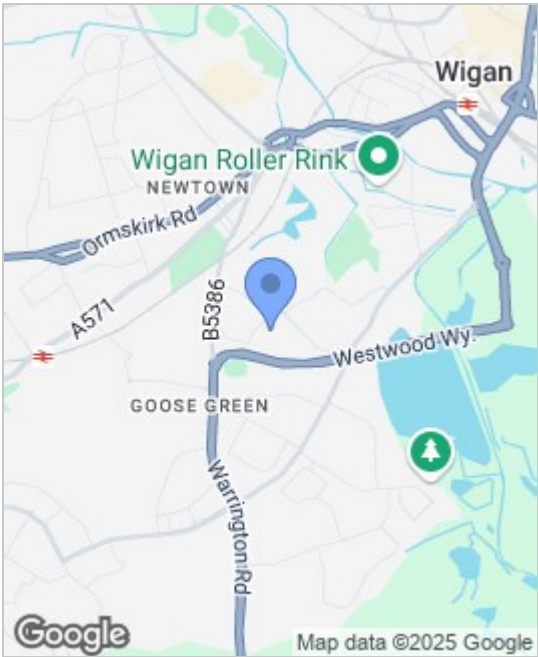
Master Bedroom

Bedroom 2

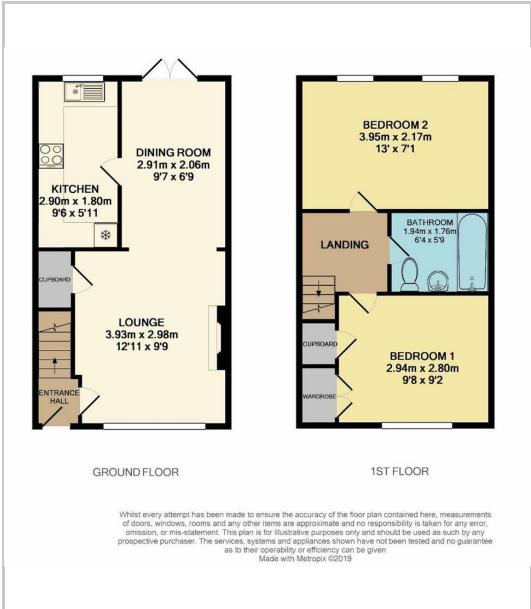
Bathroom

EXTERNAL

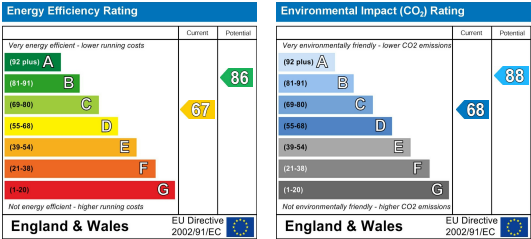
Area Map



Floor Plans



Energy Efficiency Graph



These particulars, whilst believed to be accurate are set out as a general outline only for guidance and do not constitute any part of an offer or contract. Intending purchasers should not rely on them as a representation of fact, but must satisfy themselves by inspection or otherwise as to their accuracy. No person in this firms employment has the authority to make or give any representation or warranty on behalf of the property.

