



32 Sydney Street

Platt Bridge, Wigan, WN2 5BP

£695 PCM



Sapphire Homes are delighted to be in a position to offer For Rent this wonderfully presented 3 bedroom mid terraced property in popular residential location situated close to local schools, amenities and transport links. The accommodation briefly comprises of entrance / vestibule leading to generous lounge, modern fitted kitchen / diner and modern 3 piece bathroom suite with shower over bath. To the first floor there are two good sized bedrooms and smaller single bedroom. Externally the property is pavement fronted with a yard / patio garden to the rear. The property is warmed by gas central heating and benefits from double glazing throughout. Internal viewing is highly recommended to appreciate in full. No Smoking.



GROUND FLOOR

Entrance / Hallway

Lounge

Kitchen / Diner

Bathroom

FIRST FLOOR

Master Bedroom

Bedroom 2

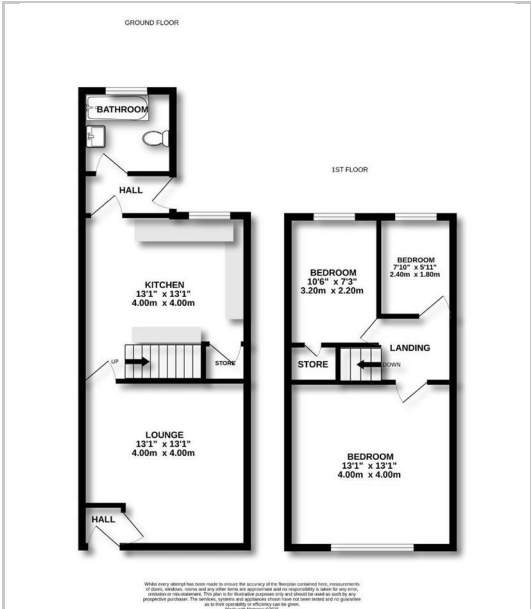
Bedroom 3

EXTERNAL

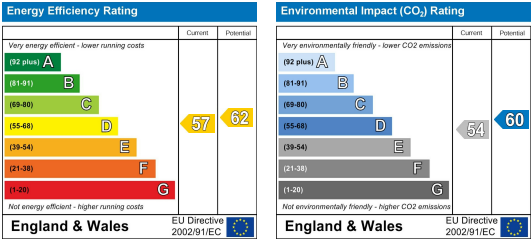
Area Map



Floor Plans



Energy Efficiency Graph



These particulars, whilst believed to be accurate are set out as a general outline only for guidance and do not constitute any part of an offer or contract. Intending purchasers should not rely on the representation of fact, but must satisfy themselves by inspection or otherwise as to their accuracy. No person in this firms employment has the authority to make or give any representation or warranty in relation to the property.

