



10 Winsmoor Drive

Hindley, Wigan, WN2 3SP

Price £205,000



Sapphire Homes are delighted to offer For Sale this well appointed and wonderfully presented 3 bedroom extended end mews family home that is located in a much sought after location that offers close proximity to local schools, amenities and transport links and also has the benefit of a south facing rear garden. In brief the accommodation comprises of a welcoming entrance / hallway, generous lounge and to the rear elevation there is a modern fitted kitchen / dining room which is open plan in a conservatory with French doors leading out to the rear garden and there is a downstairs shower suite. To the first floor the landing provides access to three well appointed bedrooms and there is a family bathroom with three piece suite in white. Externally there is a low maintenance front garden with off road parking to the side elevation and to the rear there a low maintenance garden with artificial lawn, perimeter fencing and patio area with raised borders. The property is ideal for couple or family and early internal viewings are recommended to really appreciate this lovely family home



GROUND FLOOR

Entrance / Hallway

Lounge 14'4" x 12'4" (4.39m x 3.78m)

Kitchen / Diner 15'5" x 9'1" (4.70m x 2.77m)

Conservatory 10'5" x 9'4" (3.18m x 2.87m)

W.C. / Shower Suite

FIRST FLOOR

Landing

Bedroom 1 12'4" x 8'5" (3.78m x 2.59m)

Bedroom 2 12'0" x 8'5" (3.68m x 2.59m)

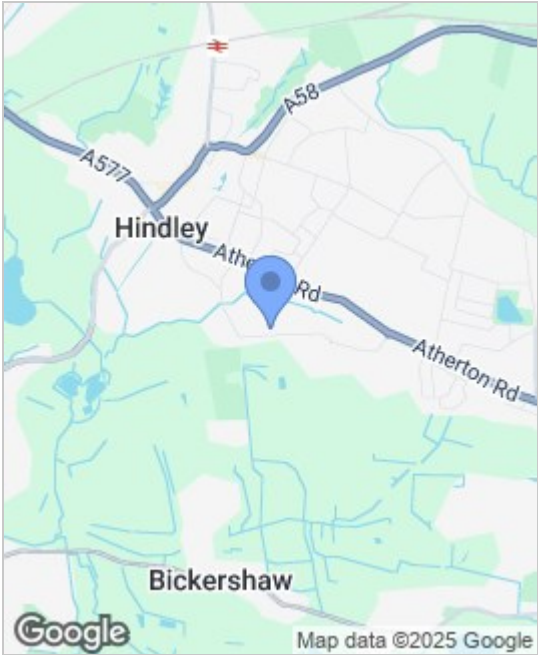
Bedroom 3 8'3" x 6'5" (2.54m x 1.96m)

Bathroom

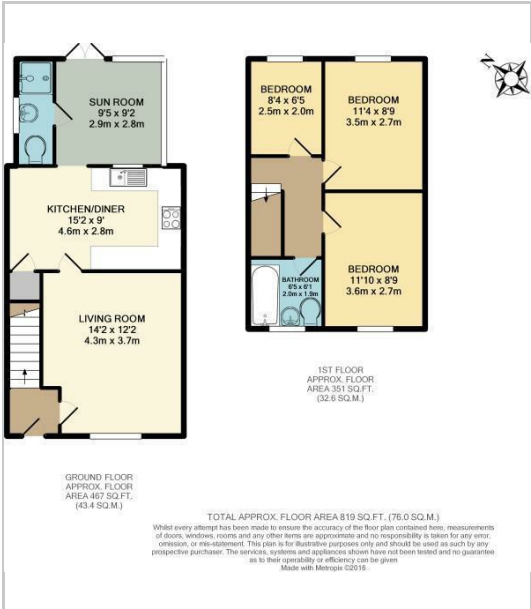
EXTERNAL

Rear Garden

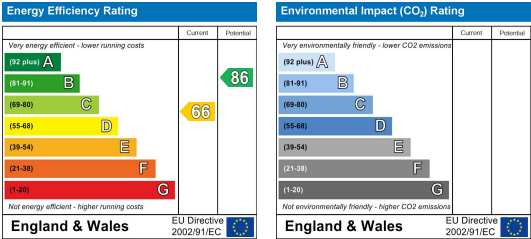
Area Map



Floor Plans



Energy Efficiency Graph



These particulars, whilst believed to be accurate are set out as a general outline only for guidance and do not constitute any part of an offer or contract. Intending purchasers should not rely on the representation of fact, but must satisfy themselves by inspection or otherwise as to their accuracy. No person in this firms employment has the authority to make or give any representation or warranty on behalf of the property.

