



Flat 14 Jacob Bright Mews, Whitworth Road

Shawclough, Rochdale, OL12 6JF

Offers Over £115,000



Sapphire Homes are pleased to offer For Sale this well presented two bedroom first floor apartment situated in a popular area that is convenient to local schools, shops, bus routes as well as local amenities. In brief the accommodation comprises of a welcoming entrance / hallway, open plan lounge / diner with modern fitted kitchen and French doors with Juliet balcony. The hallway also provides access to two double bedrooms and there is a family bathroom with modern three piece suite in white. The property is warmed by Gas Central Heating and boasts UPVC double glazing throughout and a modern tasteful décor. The property also benefits from an alarm, intercom entry system and 1 allocated parking space. Early internal viewing is highly recommended to appreciate in full.



FIRST FLOOR

Entrance / Hallway

Lounge / Dining / Kitchen

Bedroom 1

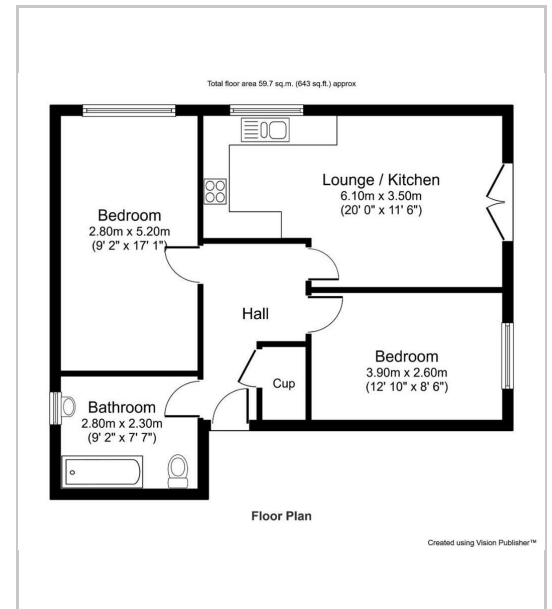
Bedroom 2

Bathroom

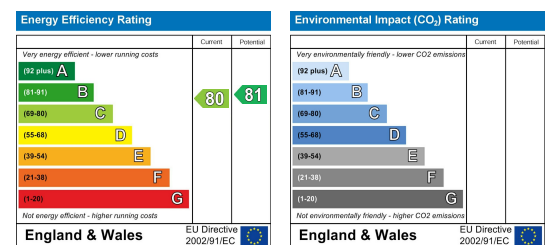
Area Map



Floor Plans



Energy Efficiency Graph



These particulars, whilst believed to be accurate are set out as a general outline only for guidance and do not constitute any part of an offer or contract. Intending purchasers should not rely on the representation of fact, but must satisfy themselves by inspection or otherwise as to their accuracy. No person in this firm's employment has the authority to make or give any representation or warranty in relation to the property.



Sapphire Homes (North) Ltd 80 Market Street, Wigan WNI 1HX
 T 01942 494944 E info@sapphirehomes.co.uk W www.sapphirehomes.co.uk VAT 183 759 366

specialists in sales, Lettings & Property Investments