



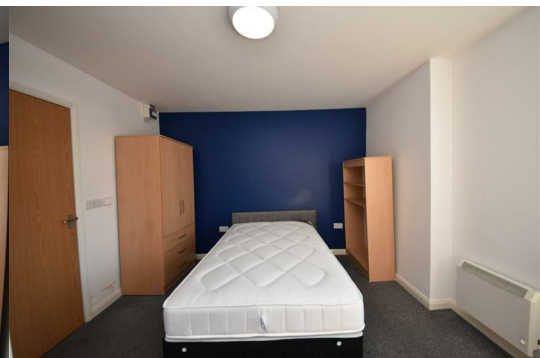
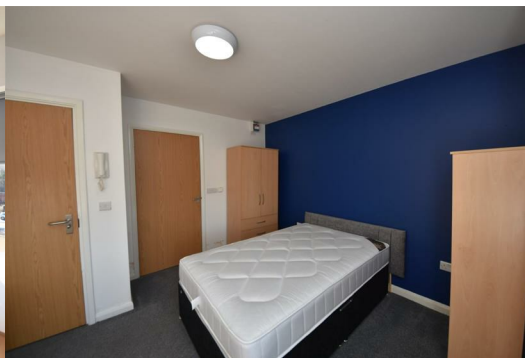
Room 17, 15 King Street West

, Wigan, WN1 1LP

£120 PCM



****TOP FLOOR**** Prominent Town Centre Building Conversion - 1 room only available on the top floor. All are all Fully Furnished to High Standard. Each Bedroom benefits from ensuite bedroom with three piece shower suite in white. Queen size bedroom. Large Communal Kitchen / Diner. Large living / dining area, all completed to high specification. CCTV Installed, Fob Entrance System. Everything within the development is Immaculately presented and viewings are a must to appreciate in full. TV Aerial points in each room. Gas Included, Electricity Included, Water Included, Council Tax Included, Internet Included. 2 Minute Walk to Wigan Bus Station. 30 Second Walk to Both Train Stations. Neutral decor throughout. Finished to a high specification. Close to all town centre amenities including shops, pubs, restaurants, retail outlets, transport links and early viewing is recommended to avoid disappointment.



GROUND FLOOR

Entrance / Hallway

FIRST FLOOR

Landing

SECOND FLOOR

Landing / Corridor

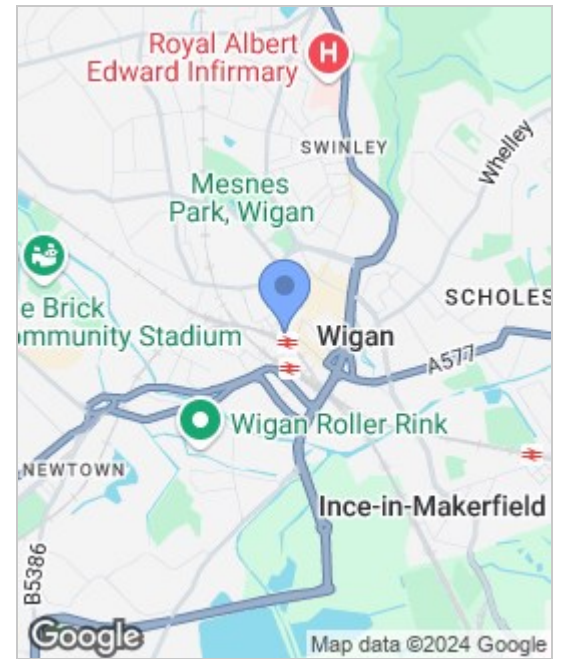
Bedroom 17

Ensuite

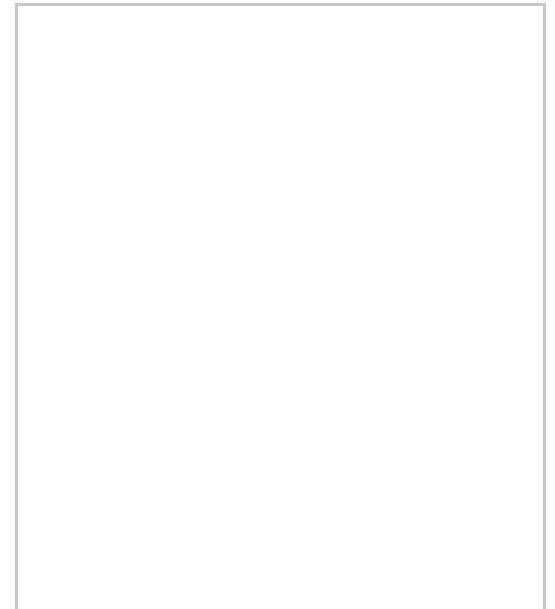
Communal Kitchen / Diner

EXTERNAL

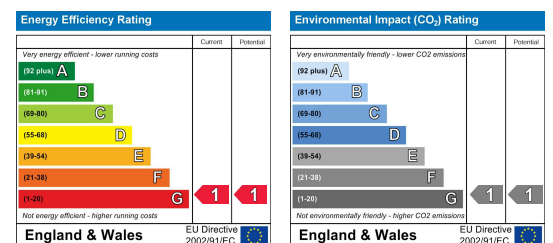
Area Map



Floor Plans



Energy Efficiency Graph



These particulars, whilst believed to be accurate are set out as a general outline only for guidance and do not constitute any part of an offer or contract. Intending purchasers should not rely on these particulars as a representation of fact, but must satisfy themselves by inspection or otherwise as to their accuracy. No person in this firm's employment has the authority to make or give any representation or warranty in relation to this property.



Sapphire Homes (North) Ltd 80 Market Street, Wigan WNI 1HX
T 01942 494944 E info@sapphirehomes.co.uk W www.sapphirehomes.co.uk VAT 183 759 366

specialists in sales, Lettings & Property Investments