



## 12 Sherwood Way

Platt Bridge, Wigan, WN2 5FD

**£795 PCM**



Sapphire Homes are delighted to offer To Let this wonderfully presented 2 bedroom end mews house in popular residential location close to local amenities, transport links and close to local schools. The accommodation briefly comprises of entrance / hallway, lounge, dining / kitchen, two double bedrooms and family bathroom with three piece suite in white and shower over bath. The property boasts gas central heating and double glazing throughout along with off road parking for 2 cars and further parking on road to the front or rear. Internal viewing is a must to appreciate in full. No Smokers.



## GROUND FLOOR

Entrance / Hallway

Lounge

Kitchen / Diner

## FIRST FLOOR

Landing

Master Bedroom

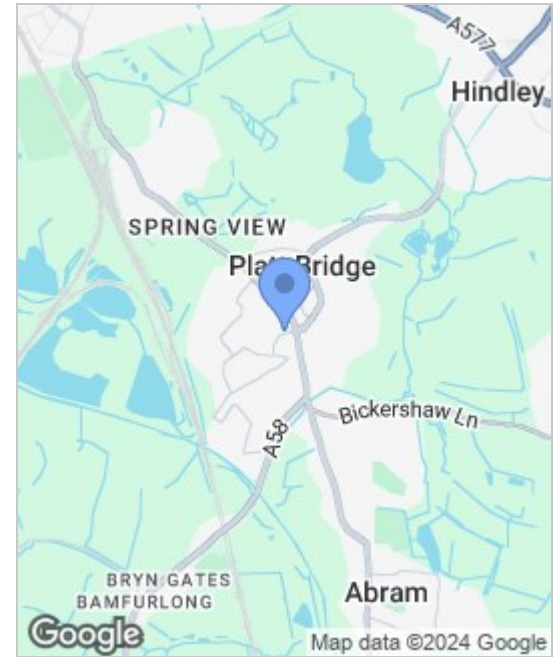
Bedroom 2

Bathroom

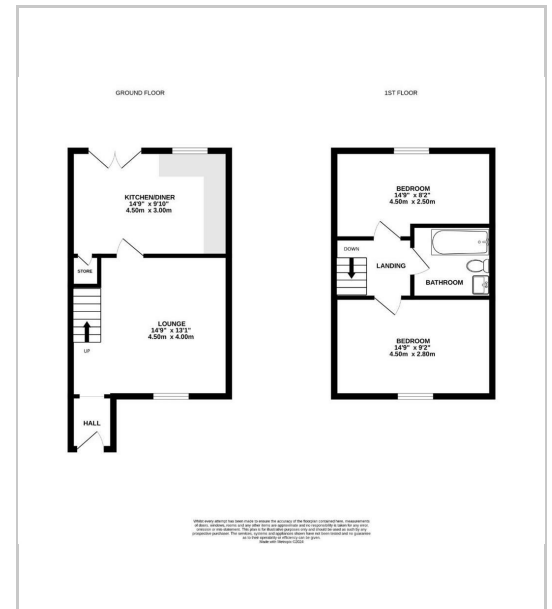
## EXTERNAL

Rear Garden

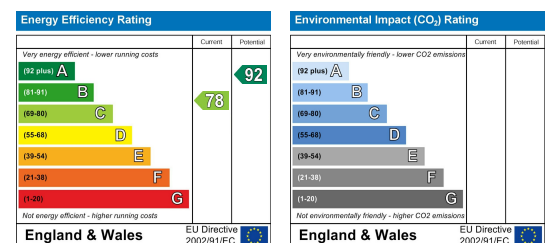
## Area Map



## Floor Plans



## Energy Efficiency Graph



These particulars, whilst believed to be accurate are set out as a general outline only for guidance and do not constitute any part of an offer or contract. Intending purchasers should not rely on the representation of fact, but must satisfy themselves by inspection or otherwise as to their accuracy. No person in this firm's employment has the authority to make or give any representation or warranty in relation to the property.



Sapphire Homes (North) Ltd 80 Market Street, Wigan WNI 1HX  
 T 01942 494944 E info@sapphirehomes.co.uk W www.sapphirehomes.co.uk VAT 183 759 366

*specialists in sales, Lettings & Property Investments*