



Flat 107 Kingsbury Close

Tottington, Bury, BL8 1WA

£895 PCM



Sapphire Homes are delighted to offer For Rent this deceptively spacious unfurnished 2 bedroom top floor apartment providing a secluded home whilst remaining close to all central amenities. The property comprises of a lounge, kitchen with integrated fridge/freezer, washing machine and dishwasher. Family bathroom with shower, 2 bedrooms - master with en-suite and robes. Allocated parking and Intercom door link. The apartment is in a pleasant valley setting alongside the meandering waters of Kirklees Brook and offers a rare opportunity to live in peaceful surroundings. Woodlands and green spaces surround the development. Yet it is just a short distance from the lively town centre of Bury and it is still within close proximity of Manchester City Centre. No Smoking. Early viewings are highly recommended.



SECOND FLOOR

Entrance / Hallway

Lounge / Diner

Kitchen

Master Bedroom

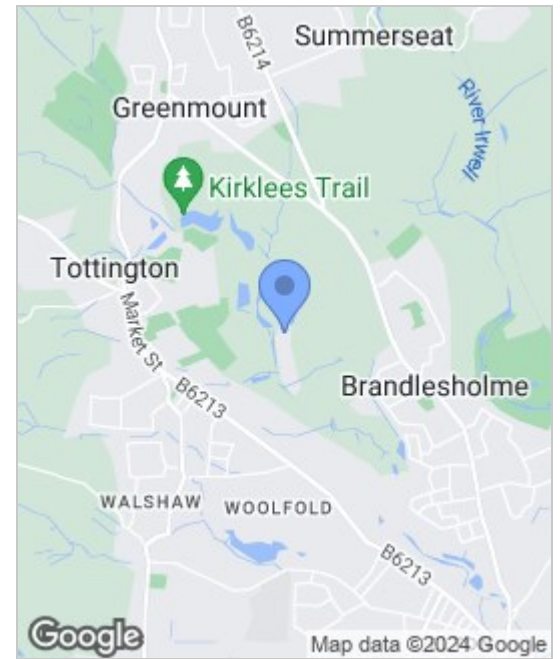
Master Ensuite

Bedroom 2

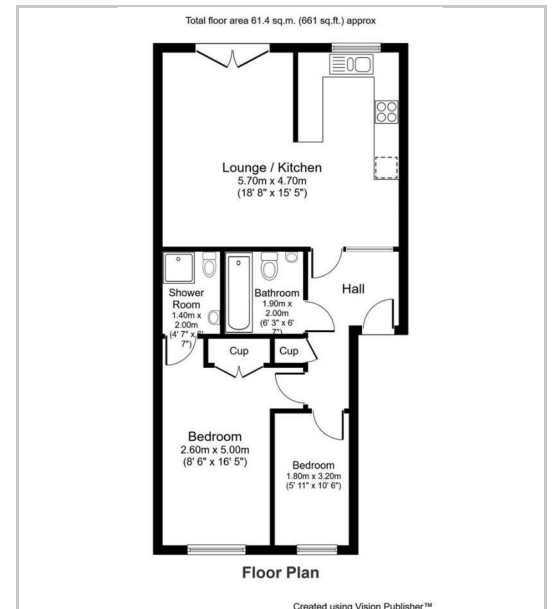
Bathroom

EXTERNAL

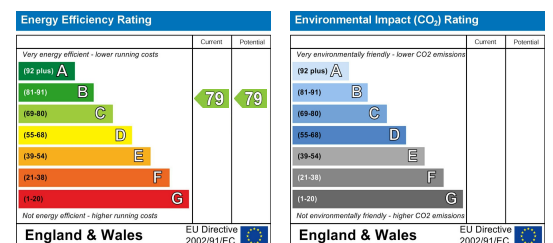
Area Map



Floor Plans



Energy Efficiency Graph



These particulars, whilst believed to be accurate are set out as a general outline only for guidance and do not constitute any part of an offer or contract. Intending purchasers should not rely on the representation of fact, but must satisfy themselves by inspection or otherwise as to their accuracy. No person in this firm's employment has the authority to make or give any representation or warranty in relation to this property.



Sapphire Homes (North) Ltd 80 Market Street, Wigan WNI 1HX
 T 01942 494944 E info@sapphirehomes.co.uk W www.sapphirehomes.co.uk VAT 183 759 366

specialists in sales, Lettings & Property Investments