



2 Nathaniel Court

Platt Bridge, Wigan, WN2 3UP

Price £165,000



Sapphire Homes are delighted to offer For Sale this wonderfully maintained three bedroom semi detached family home located in a popular residential location that is close to local schools, amenities and transport links and would be perfect for couple or family. The accommodation in brief comprises of entrance / hallway, generous living room with through dining and there is a separate modern fitted kitchen with door leading to the rear garden. To the first floor the landing provides access to three good sized bedrooms with the master benefitting from fitted robes and there is a family bathroom with modern three piece suite in white with shower over bath. The property is warmed by Gas Central Heating and boasts a modern tasteful décor and UPVC double glazing throughout. Externally to the front elevation there is a lawn area and to the rear there is off road parking, patio area and perimeter fencing with gated access to the side elevation. Early internal viewing is highly recommended to appreciate this wonderful property.



GROUND FLOOR

Entrance / Hallway

Lounge

Dining Area

Kitchen

FIRST FLOOR

Landing

Bedroom 1

Bedroom 2

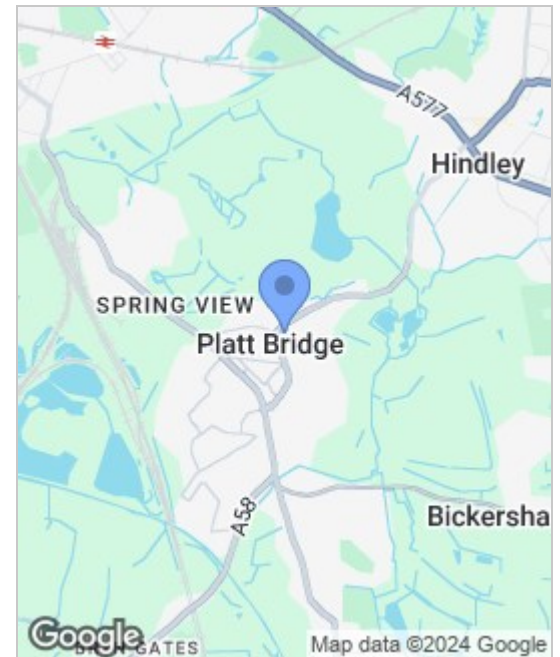
Bedroom 3

Bathroom

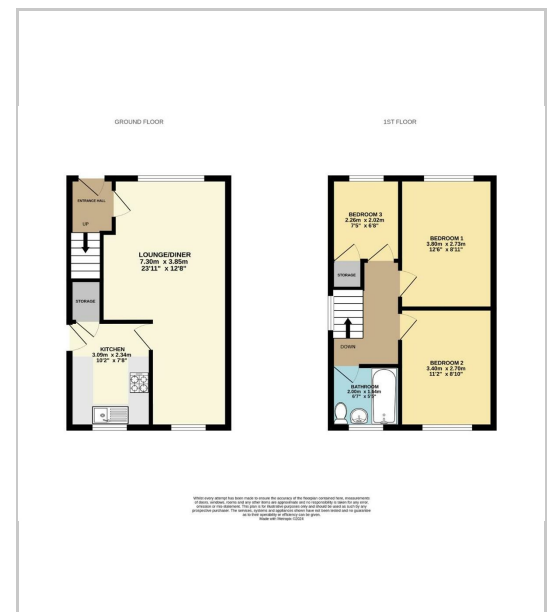
EXTERNAL

Rear Garden

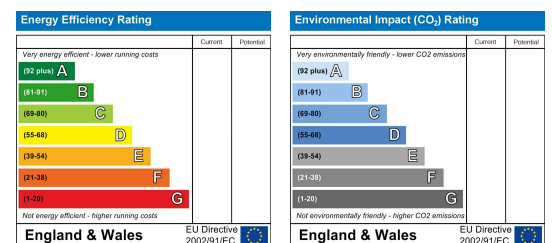
Area Map



Floor Plans



Energy Efficiency Graph



These particulars, whilst believed to be accurate are set out as a general outline only for guidance and do not constitute any part of an offer or contract. Intending purchasers should not rely on the representation of fact, but must satisfy themselves by inspection or otherwise as to their accuracy. No person in this firm's employment has the authority to make or give any representation or warranty in relation to the property.



Sapphire Homes (North) Ltd 80 Market Street, Wigan WNI 1HX
 T 01942 494944 E info@sapphirehomes.co.uk W www.sapphirehomes.co.uk VAT 183 759 366

specialists in sales, Lettings & Property Investments