



8 Hullet Close

Appley Bridge, Wigan, WN6 9LD

£895 PCM



Sapphire Homes are delighted to offer For Rent this well presented 3 bedroom semi detached family home that is situated in a quiet cul de sac in a popular location that is close to local schools, amenities & transport links included the M6 motorway and all the networks this provides access too as well as being a brief walk into the heart of Appley Bridge Village. The accommodation briefly comprises entrance / hallway leading to spacious lounge with through dining room and access to separate modern fitted kitchen. The hallway also provides access to a family bathroom with 3 piece shower suite in white. To the first floor the landing offers access to three good sized bedrooms. The property is warmed by Gas Central Heating and benefits from UPVC double glazing throughout as well as a tasteful décor. Externally the property has a good sized rear garden with large patio area, shed, established lawn, well stocked borders and a private rear outlook. To the front elevation there is a low maintenance garden with parking to the side elevation. Early internal viewings are highly recommended to appreciate in full. No Smoking.



GROUND FLOOR

Entrance / Hallway

Lounge

Dining Area

Kitchen

Bathroom

FIRST FLOOR

Landing

Bedroom 1

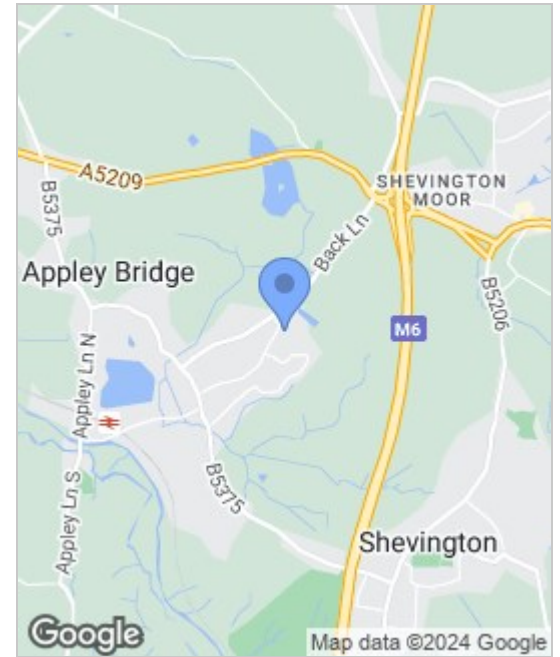
Bedroom 2

Bedroom 3

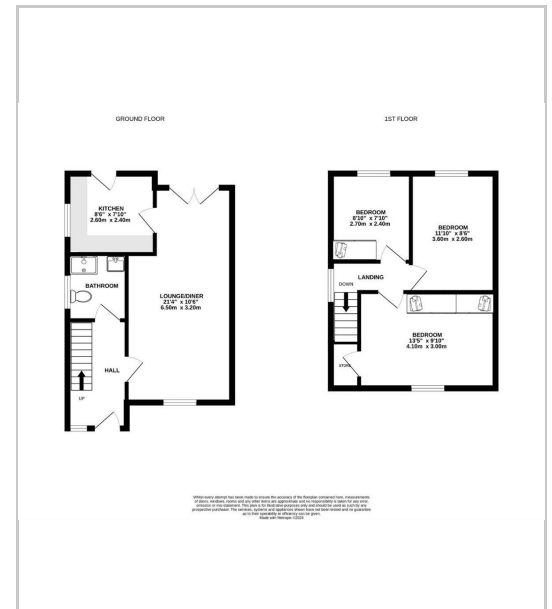
EXTERNAL

Rear Garden

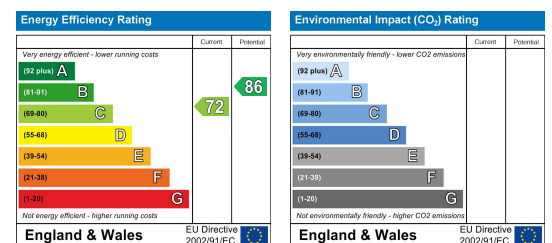
Area Map



Floor Plans



Energy Efficiency Graph



These particulars, whilst believed to be accurate are set out as a general outline only for guidance and do not constitute any part of an offer or contract. Intending purchasers should not rely on the representation of fact, but must satisfy themselves by inspection or otherwise as to their accuracy. No person in this firm's employment has the authority to make or give any representation or warranty in relation to the property.



Sapphire Homes (North) Ltd 80 Market Street, Wigan WNI 1HX
 T 01942 494944 E info@sapphirehomes.co.uk W www.sapphirehomes.co.uk VAT 183 759 366

specialists in sales, Lettings & Property Investments