



2 Mabel Street

Pemberton, Wigan, WN5 9EJ

Offers Over £175,000



Sapphire Homes are delighted to be in a position to offer For Sale this wonderfully presented 4 bedroom end terraced family home that is located in a popular residential location as well as being close to local schools, amenities and transport links including Pemberton train station. The accommodation briefly comprises of entrance / hallway, W.C., spacious lounge with fire and surround and to the rear elevation is a further reception room and a modern fitted kitchen / dining room with door leading to the rear garden. To the first floor the landing provides access to four well appointed bedrooms and there is a family bathroom with modern three piece suite in white with shower over bath. The property is warmed by Gas Central Heating and also benefits from a modern tasteful decor and UPVC double glazing throughout. Externally there is off road parking for 2 cars to the front elevation and to the rear there is a patio garden with gated access. The property would be ideal for family and early internal viewing is highly recommended to appreciate this home in full which is offered to market with the benefit of No Upward Chain.



GROUND FLOOR

Entrance / Hallway

Lounge

Dining Room / Reception 2

Kitchen / Diner

W.C.

FIRST FLOOR

Landing

Bedroom 1

Bedroom 2

Bedroom 3

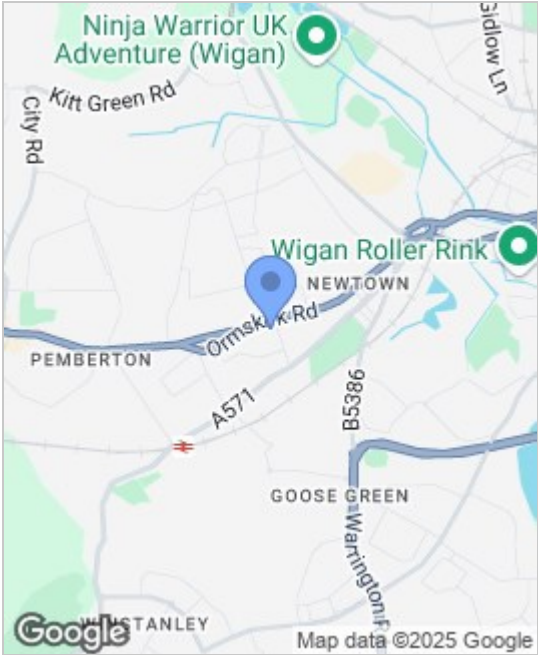
Bedroom 4

Bathroom

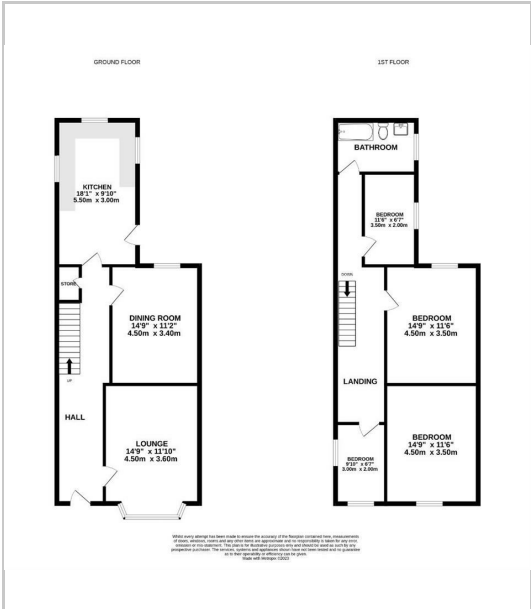
EXTERNAL

Rear Garden

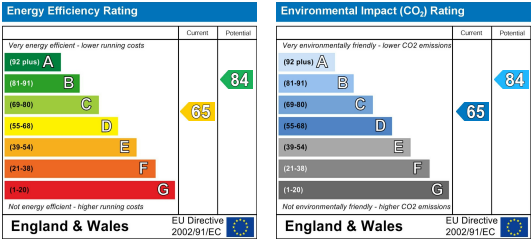
Area Map



Floor Plans



Energy Efficiency Graph



These particulars, whilst believed to be accurate are set out as a general outline only for guidance and do not constitute any part of an offer or contract. Intending purchasers should not rely on them as a representation of fact, but must satisfy themselves by inspection or otherwise as to their accuracy. No person in this firms employment has the authority to make or give any representation or warranty in relation to the property.

