



12 Lily Lane

Bamfurlong, Wigan, WN2 5JN

Offers In The Region Of £89,995



Sapphire Homes are delighted to offer For Sale this two bedroom mid terraced house that would be perfect for professional, couple or small family. The property is situated in a popular residential location and is close to local schools, amenities and transport links and would appeal to first time buyer or investor. The accommodation briefly comprises of entrance / vestibule which leads to a generous lounge and to the rear elevation there is a kitchen / diner with door providing access to the rear garden. To the first floor the landing provides access to two good sized bedrooms and a bathroom with three piece suite with shower over bath. The property benefits from UPVC double glazing, gas central heating and a fully enclosed garden with gated access from the rear. There is also a garage with a parking space which is rented at an additional cost. Early internal viewings are highly recommended to appreciate in full. Offered to market with No Upward Chain.



GROUND FLOOR

Entrance / Vestibule

Lounge

Kitchen / Diner

FIRST FLOOR

Landing

Bedroom 1

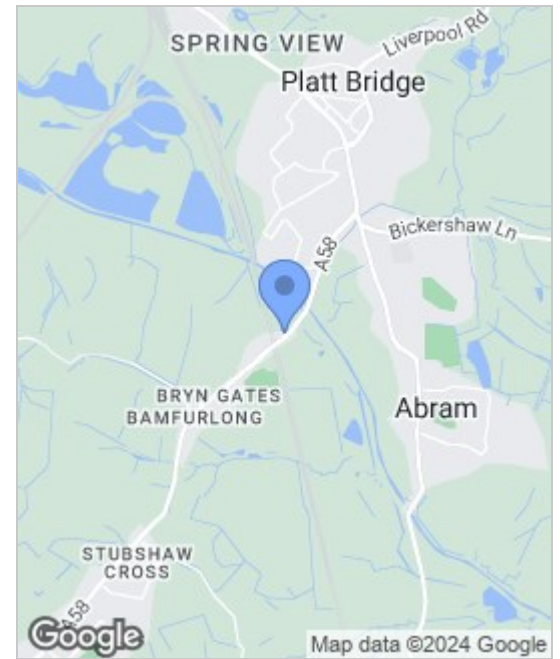
Bedroom 2

Bathroom

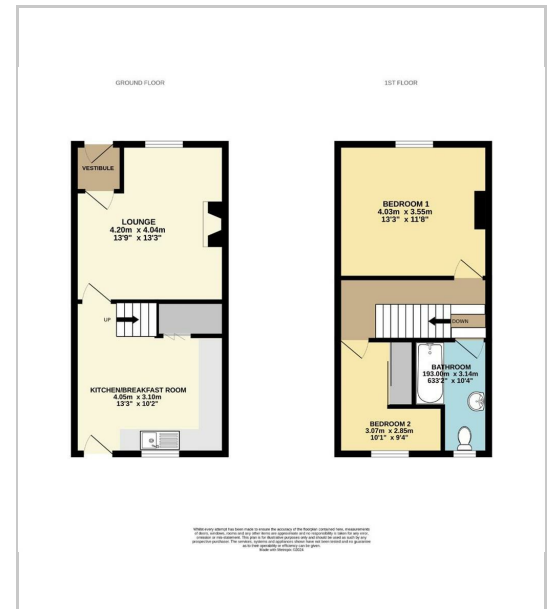
EXTERNAL

Rear Garden

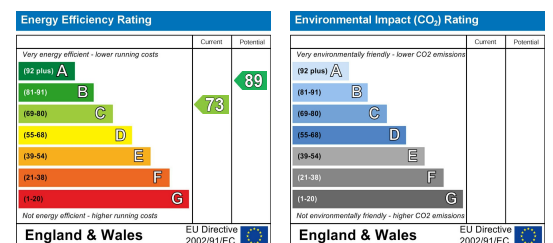
Area Map



Floor Plans



Energy Efficiency Graph



These particulars, whilst believed to be accurate are set out as a general outline only for guidance and do not constitute any part of an offer or contract. Intending purchasers should not rely on the representation of fact, but must satisfy themselves by inspection or otherwise as to their accuracy. No person in this firm's employment has the authority to make or give any representation or warranty in relation to the property.



Sapphire Homes (North) Ltd 80 Market Street, Wigan WNI 1HX
 T 01942 494944 E info@sapphirehomes.co.uk W www.sapphirehomes.co.uk VAT 183 759 366

specialists in sales, Lettings & Property Investments