



October Cottage Woodside Road

Chiddingfold Godalming Surrey GU8 4RB

Asking Price: £525,000 Freehold





- ***No Onward Chain***
- Easy Reach of Village Centre
- Potential to Improve
- Sitting Room
- Dining Room
- Kitchen & Cloakroom
- Four Bedrooms & Two Bathrooms
- Gas Central Heating & Double Glazed Windows
- Enclosed Rear Garden
- Detached garage & Driveway



A four bedroom detached family house with garage requiring some modernising. The house is located in an established residential road within easy reach of the village centre, school and main line station to London Waterloo.







Witley Main Line Station – 2.0 miles (Waterloo approx. 55 mins)

Village Centre – 0.9 miles Godalming – 6.5 miles

Primary School – 0.7 miles

Secondary School – 4.5 miles

Doctors – 0.7 miles Dentist – 3.6 miles

A3 – 6 miles M25 – 20 miles M3 – 19.5 miles

Council Tax Band – F Payable – £ 3,633.12 (2025/26)

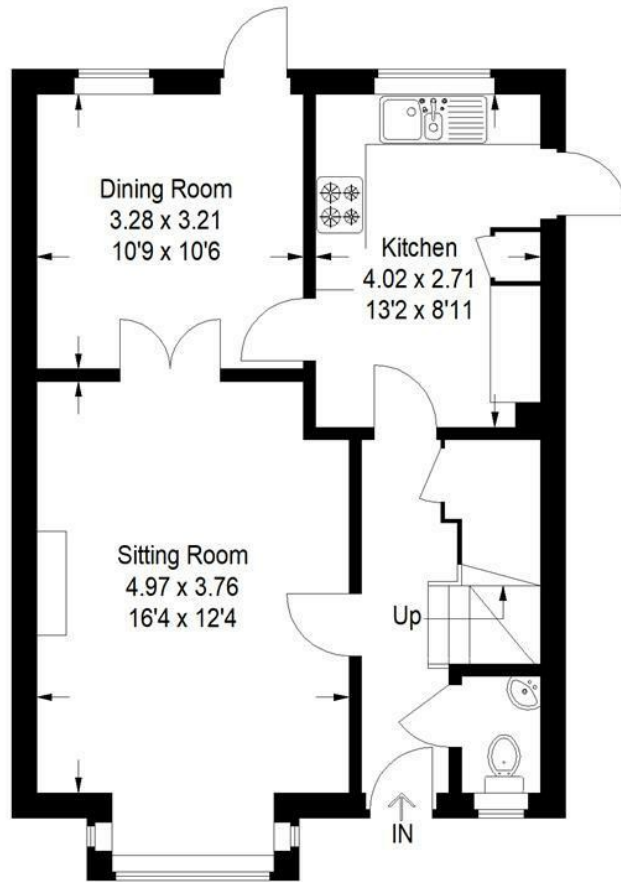
EPC Rating – D



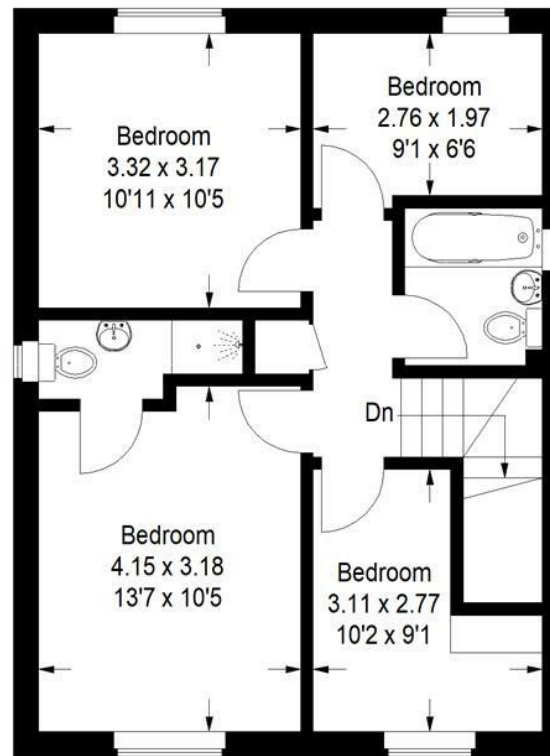
Directions: Proceed out of Godalming in a southerly direction on the A3100 turning right at the roundabout by the Inn on the Lake and continuing on under the railway bridge towards Milford village. On reaching Milford take the first turning left at the mini roundabout into Church Road and at the next roundabout take the first exit again this time on to the Petworth Road (A283). Continue through the villages of Witley and Wormley and on towards Chiddingfold and on reaching Chiddingfold take the first turning on your right hand side immediately before the cricket green into Woodside Road. Continue along



Approximate Gross Internal Area :
House = 103.5 sq m / 1114 sq ft
Garage = 14.0 sq m / 151 sq ft
Total = 117.5 sq m / 1265 sq ft



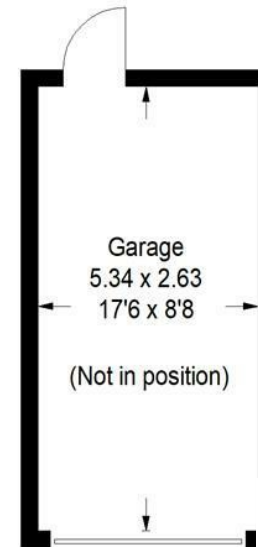
Ground Floor



First Floor



This plan is for representation purposes only. Reproduced from plans supplied by the selling Agent. Not drawn to scale unless stated. Please check all dimensions before making any decisions reliant upon them. No guarantee is given on square footage if quoted. Any figures if quoted should not be used as a basis for valuation.



PrimeLocation.com

ZOOPLA



**Emery &
Orchard**
ESTATE AGENTS

01483 419 300

20 High Street
Godalming
Surrey
GU7 1EB

email:office@emery-orchard.co.uk

Note: These details are intended as a guide only and whilst believed to be correct are not guaranteed and they do not form part of any contract. We would inform prospective purchasers that we have not tested any equipment, appliances, fixtures, fittings or services. Any items not referred to in these particulars are excluded from the sale unless separately agreed. The distance to services & schools are approximate and given as a guide only. Prospective purchasers must check the admission policy for any school mentioned as these may vary.

naea | propertymark

PROTECTED

