



23 Highcroft

Milford Surrey GU8 5AZ

Asking Price: £269,500 Leasehold



- Entrance Hall
- Living Room
- Fitted Kitchen with Many Appliances
- Two Bedrooms
- Refitted Shower Room
- Gas Central Heating
- Double Glazing
- Estate Manager + 24 hour Emergency Call System
- Resident Lounge, Laundry & Guest Suite
- Attractive Communal Gardens, Patio & Parking Area



A delightful two bedroom bungalow providing bright and well planned accommodation forming part of this popular low level retirement development set in attractive communal gardens. Highcroft benefits from an on-site Estate Manager, residents lounge/conservatory, laundry & guest suite. The property occupies a convenient location approximately 1/2 mile from the village centre with its excellent local shops and facilities, doctors and dentists, nearby bus routes and main line station. (* Price based on 70/30% shared equity)



Emery &
Orchard
ESTATE AGENTS





Main Line Station – 1.1 miles (Waterloo approx. 55 mins)

Village Centre – 0.5 miles Godalming – 2.1 miles

Doctors – 0.5 miles Dentist – 0.7 miles

Gatwick – 29 miles Heathrow – 28.6 miles

A3 – 1 mile M25 – 15.8 miles M3 – 15.3 miles

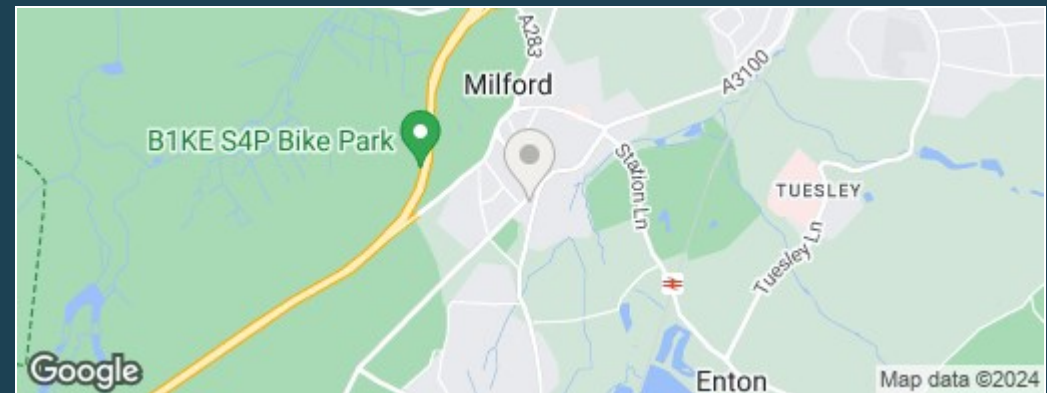
Council Tax Band – C Payable – £2101.99p EPC Rating – C

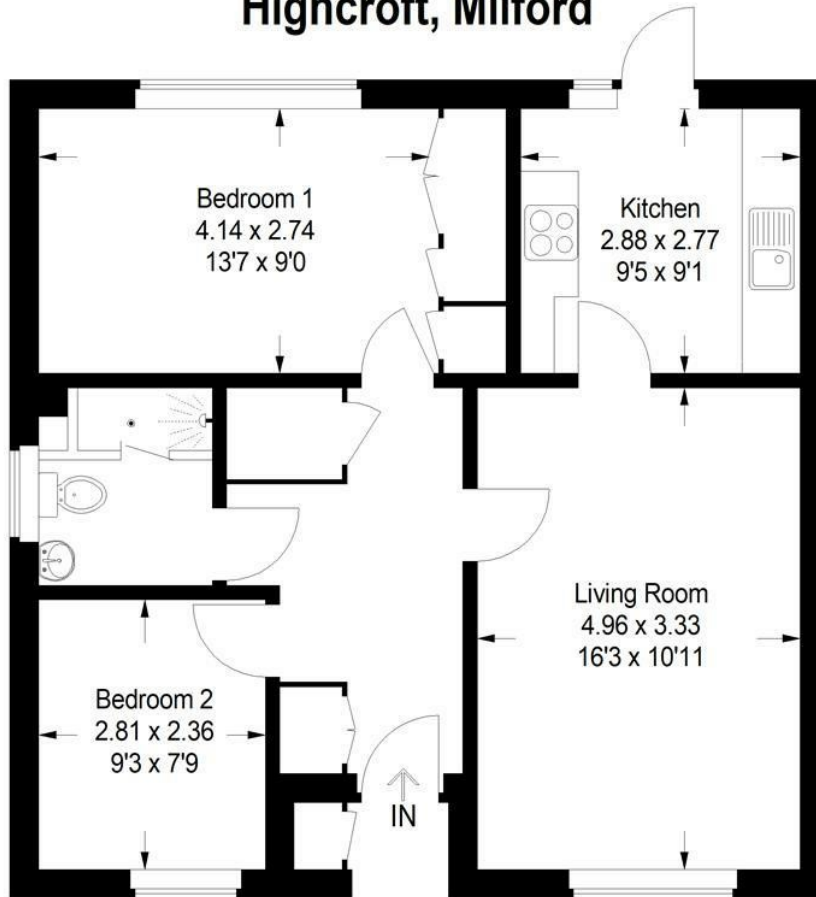
Leasehold – New 99 Years Service Charge – £3463.16 (TBC)

Ground Rent – Nil



Leave Godalming in a southerly direction on the A3100 taking the right hand exit at the roundabout by the Inn on the Lake and continuing on to Milford village. On reaching the village, at the first mini roundabout take the first turning left into Church Road. At the next roundabout take the first exit onto the A283 Petworth Road and Highcroft will then be seen after a short distance on the right hand side.





Approximate Gross Internal Area
(Including Store)
61.4 sq m / 661 sq ft

This plan is for representation purposes only as defined by the RICS Code of Measuring Practice. Not drawn to scale unless stated. Please check all dimensions before making any decisions reliant upon them. No guarantee is given on square footage if quoted. Any figures if quoted should not be used as a basis for valuation.

 PrimeLocation.com

A member of  nTheMarket.com



**Emery &
Orchard**
ESTATE AGENTS

01483 419 300

20 High Street
Godalming
Surrey
GU7 1EB

email:office@emery-orchard.co.uk

Note: These details are intended as a guide only and whilst believed to be correct are not guaranteed and they do not form part of any contract. We would inform prospective purchasers that we have not tested any equipment, appliances, fixtures, fittings or services. Any items not referred to in these particulars are excluded from the sale unless separately agreed. The distance to services & schools are approximate and given as a guide only. Prospective purchasers must check the admission policy for any school mentioned as these may vary.

