



20a Lower Drayton Lane, Portsmouth, PO6 2HA

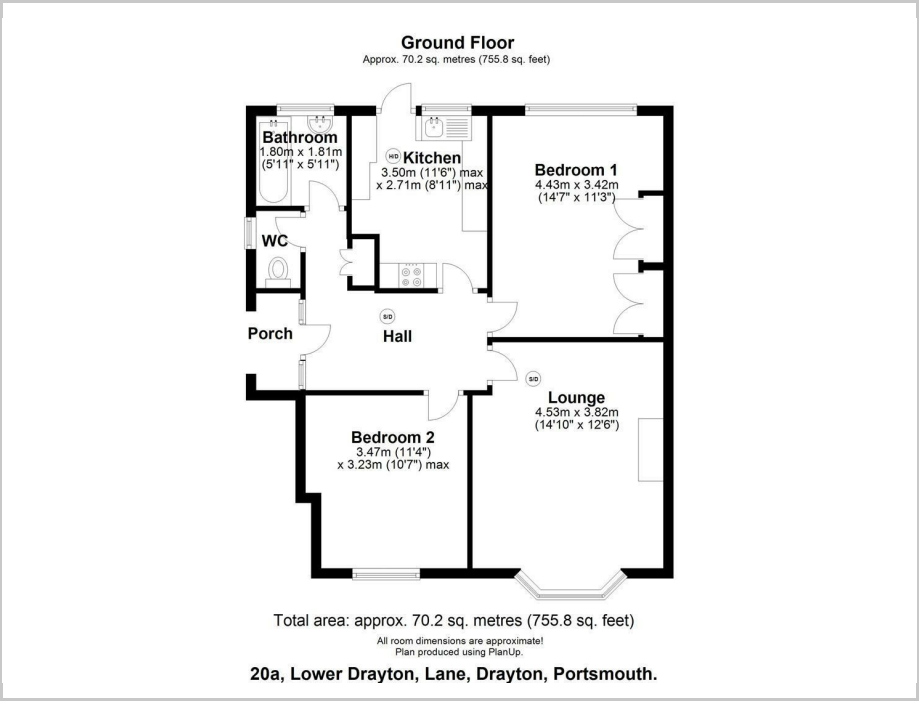
£1,065 PCM Council Tax Band A Deposit £1,038



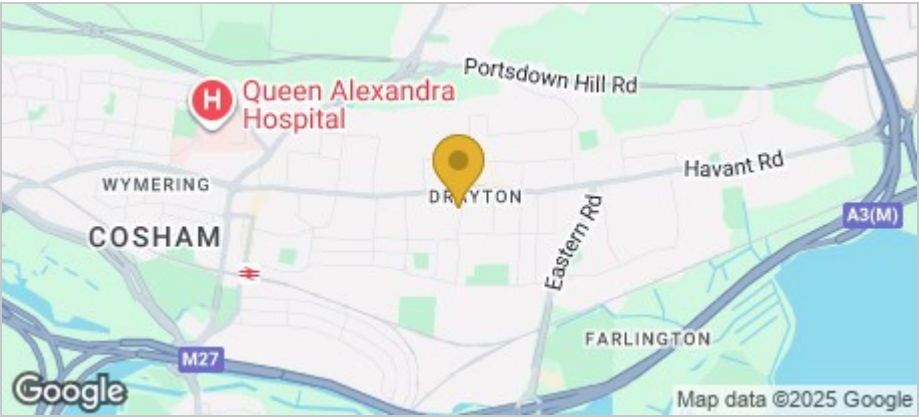
Tully's



Floor Plan



Area Map



Accommodation

- COURT LANE AND SPRINGFIELD CATCHMENT
- TWO BEDROOM GROUND FLOOR FLAT
- FITTED KITCHEN
- GOOD SIZE REAR GARDEN
- DOUBLE GLAZING
- ELECTRIC HEATING
- AVAILABLE WITH OR WITHOUT PETS

Viewing

Please contact our Southsea Office on 023 9273 2241 if you wish to arrange a viewing appointment for this property or require further information.

Energy Efficiency Graph

