



35 Victoria Road South  
Portsmouth, PO5 2BX

Asking Price £450,000

6 1 1 C

Tullys



## 35 Victoria Road South

Southsea, Portsmouth, PO5 2BX

We are delighted to bring to the market this spacious 6 bedroom house situated in Southsea.

The property comprises of large communal lounge, bathroom, shower room, separate toilet, fitted kitchen, utility room and rear garden.

Other benefits include driveway parking for 2 cars, Double Glazing and Gas Central Heating throughout.

A substantial period property suitable for continued use as an HMO, or alternatively offering huge scope for reversion back to a lovely family home. Arranged over two floors and offering SIX substantial bedrooms, this fabulous period house is located in Victoria Road South, close to Albert Road and the seafront.

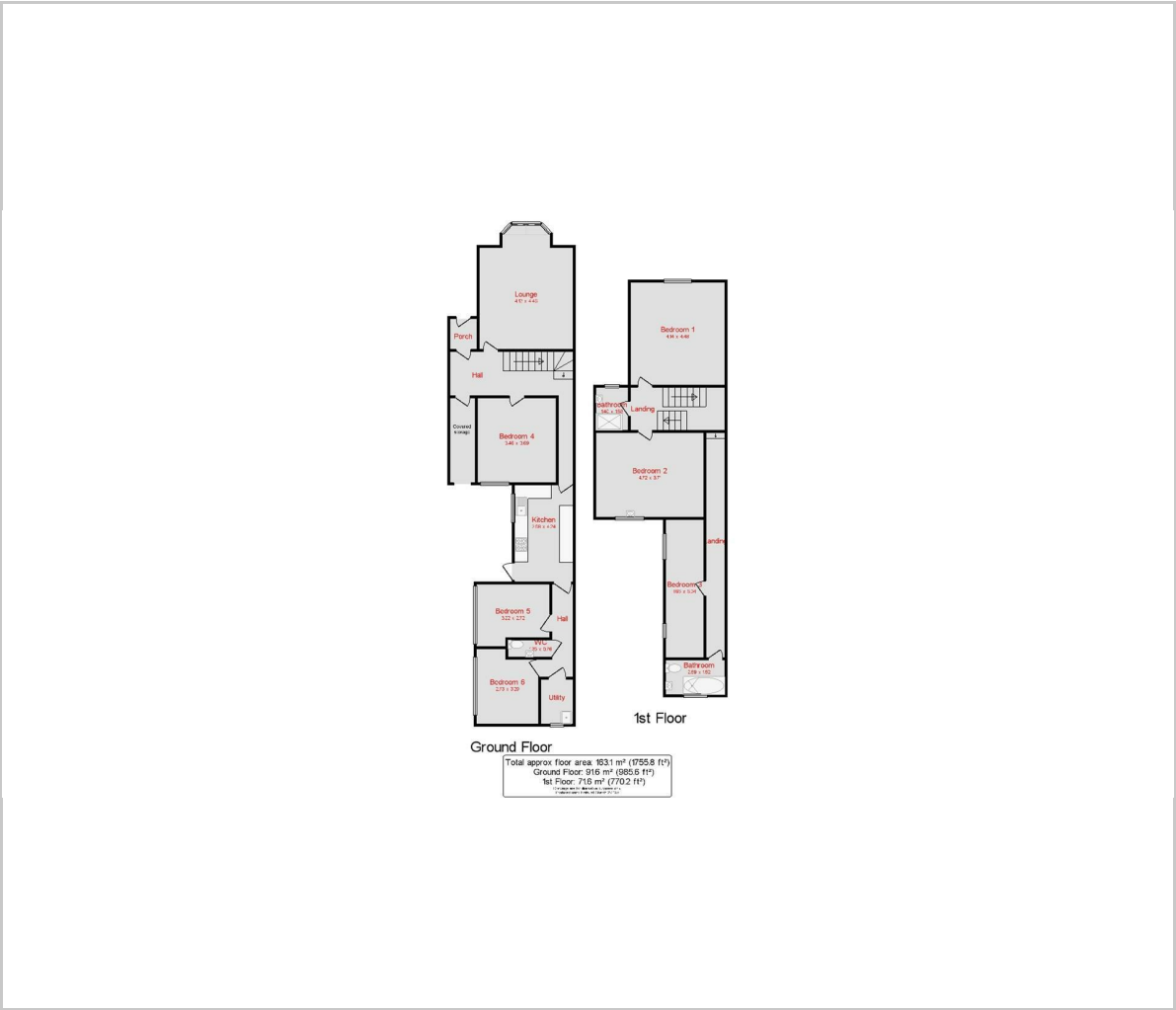
Having been used for many years as a student HMO, there is scope for both continued rental use, or alternatively conversion back to a family home.







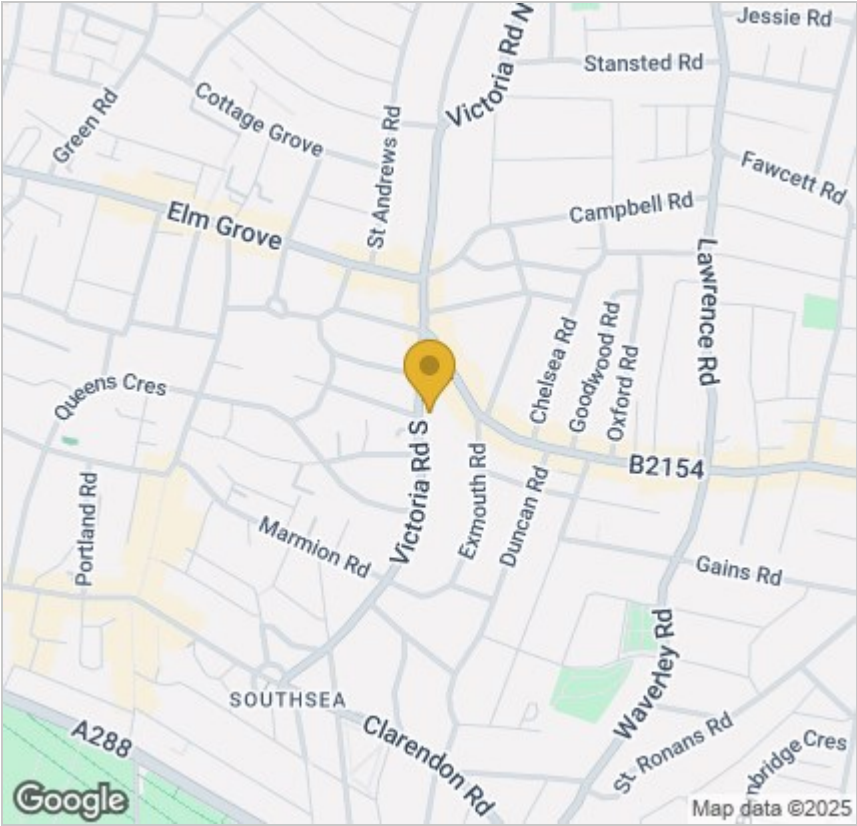
Floor Plan



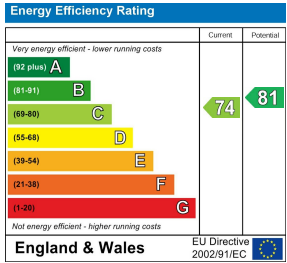
Viewing

Please contact our Southsea Office on 023 9273 2241 if you wish to arrange a viewing appointment for this property or require further information.

Area Map



Energy Efficiency Graph



Tully & Co  
157-159 Albert Road, Southsea, Portsmouth, Hampshire, PO4 oJW  
023 9273 2241 Email: tully@tullyand.co lettings@tullyand.co

