



23 Charter House Lord Montgomery Way
Portsmouth, PO1 2SG

Asking Price £200,000 Council Tax Band

 3
  2
  1
  C

Tullys

23 Charter House Lord

Portsmouth, PO1 2SG

*****NO FORWARD CHAIN***** We are delighted to bring to the market this to offer this 3 bedroom flat in the popular location of Charter House on Lord Montgomery Road, minutes from the City Centre, Gunwharf Quays and local Transport Links.

The property is located in a landmark building with its period features and lift access. The property benefits from 3 large double bedrooms and one with ensuite, large and airy lounge/kitchen/diner and separate bathroom.

Call today to arrange a viewing of this not to be missed apartment.

LOUNGE / DINER / KITCHEN
14'4 x 11'8 (4.37m x 3.56m)

BEDROOM 1
14'8 x 14'4 (4.47m x 4.37m)

BEDROOM 2
13 x 11'3 (3.96m x 3.43m)

BEDROOM 3
10'9 x 11'9 (3.28m x 3.58m)

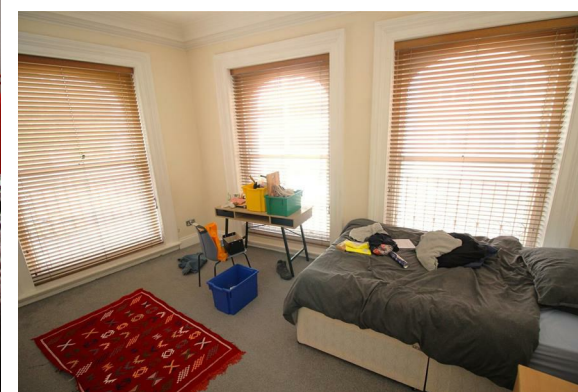
BATHROOM
11'11 x 4'10 (3.63m x 1.47m)

FURTHER INFORMATION

Council tax band - D

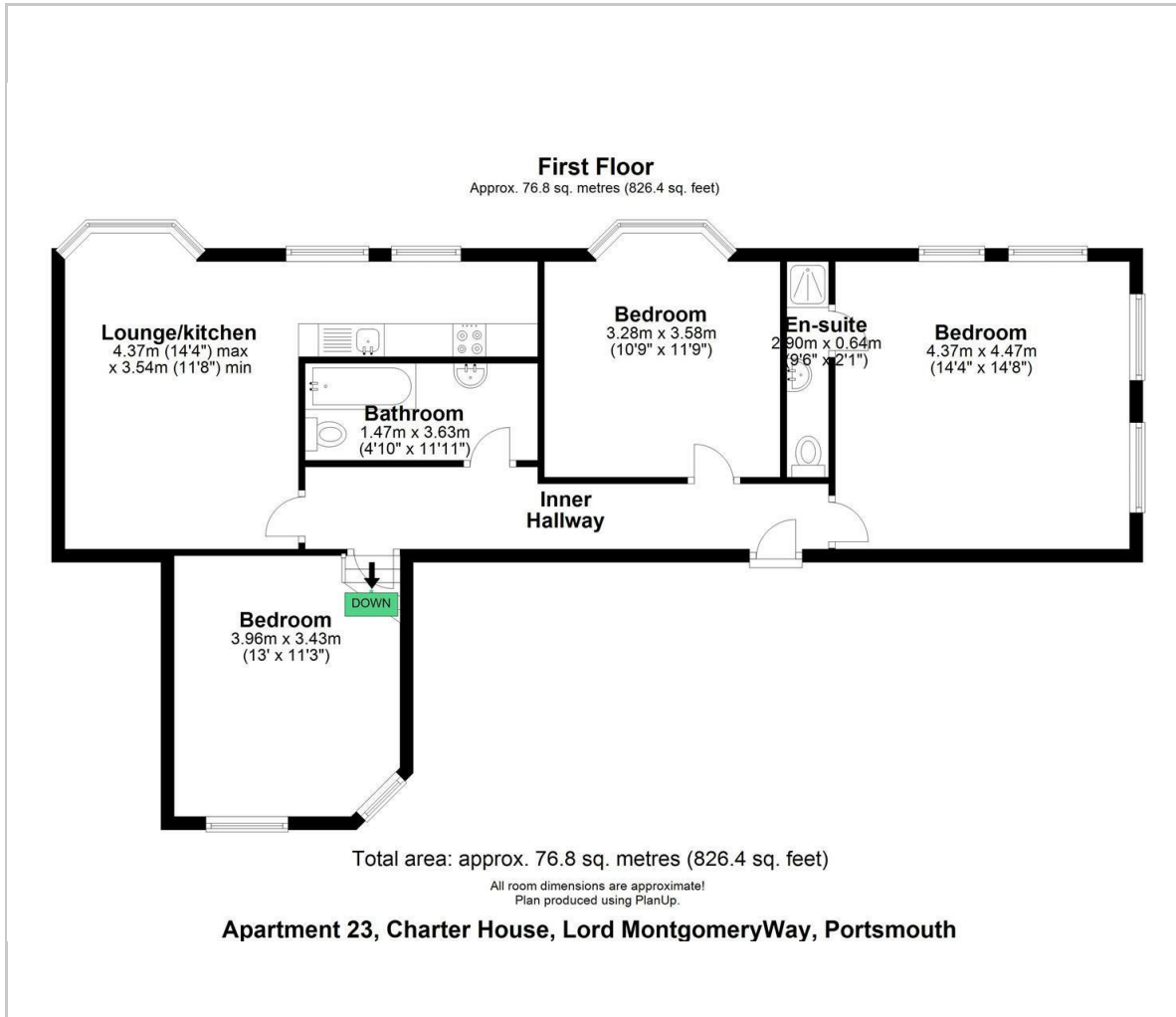
Tenure - Leasehold (99 years from 2003).

Service Charge approximately £2,760 p/a.





Floor Plan



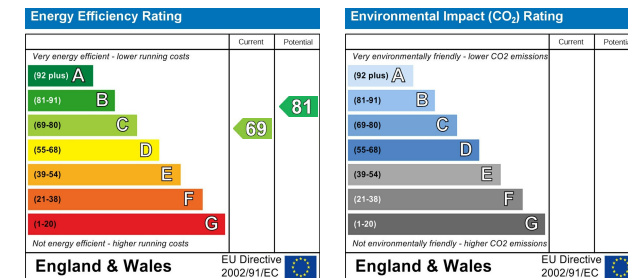
Viewing

Please contact our Southsea Office on 023 9273 2241 if you wish to arrange a viewing appointment for this property or require further information.

Area Map



Energy Efficiency Graph



Tully & Co

157-159 Albert Road, Southsea, Portsmouth, Hampshire, PO4 0JW

023 9273 2241 Email: sales@tullyand.co

Tully's