



23 Charter House Lord Montgomery Way
Portsmouth, PO1 2SG

Asking Price £200,000 Council Tax Band

3 2 1

Tullys

23 Charter House Lord

Portsmouth, PO1 2SG

*** THREE BEDROOM INVESTMENT PROPERTY ***
*** TENANTS IN SITU ***
*** CLOSE TO UNIVERSITY ***

Let to students, this three bedroom apartment is situated conveniently on Lord Montgomery Way in the heart of the University campus, close to the University library, shops, bars and Portsmouth City centre.

Currently yielding £1,550 pcm, this would make a useful addition to a rental portfolio.

LOUNGE / DINER / KITCHEN
14'4 x 11'8 (4.37m x 3.56m)

BEDROOM 1
14'8 x 14'4 (4.47m x 4.37m)

BEDROOM 2
13 x 11'3 (3.96m x 3.43m)

BEDROOM 3
10'9 x 11'9 (3.28m x 3.58m)

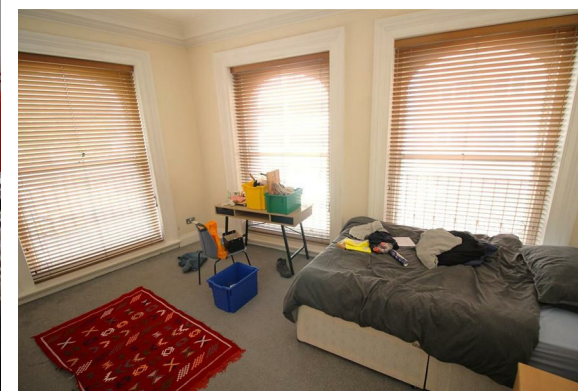
BATHROOM
11'11 x 4'10 (3.63m x 1.47m)

FURTHER INFORMATION

Council tax band - D

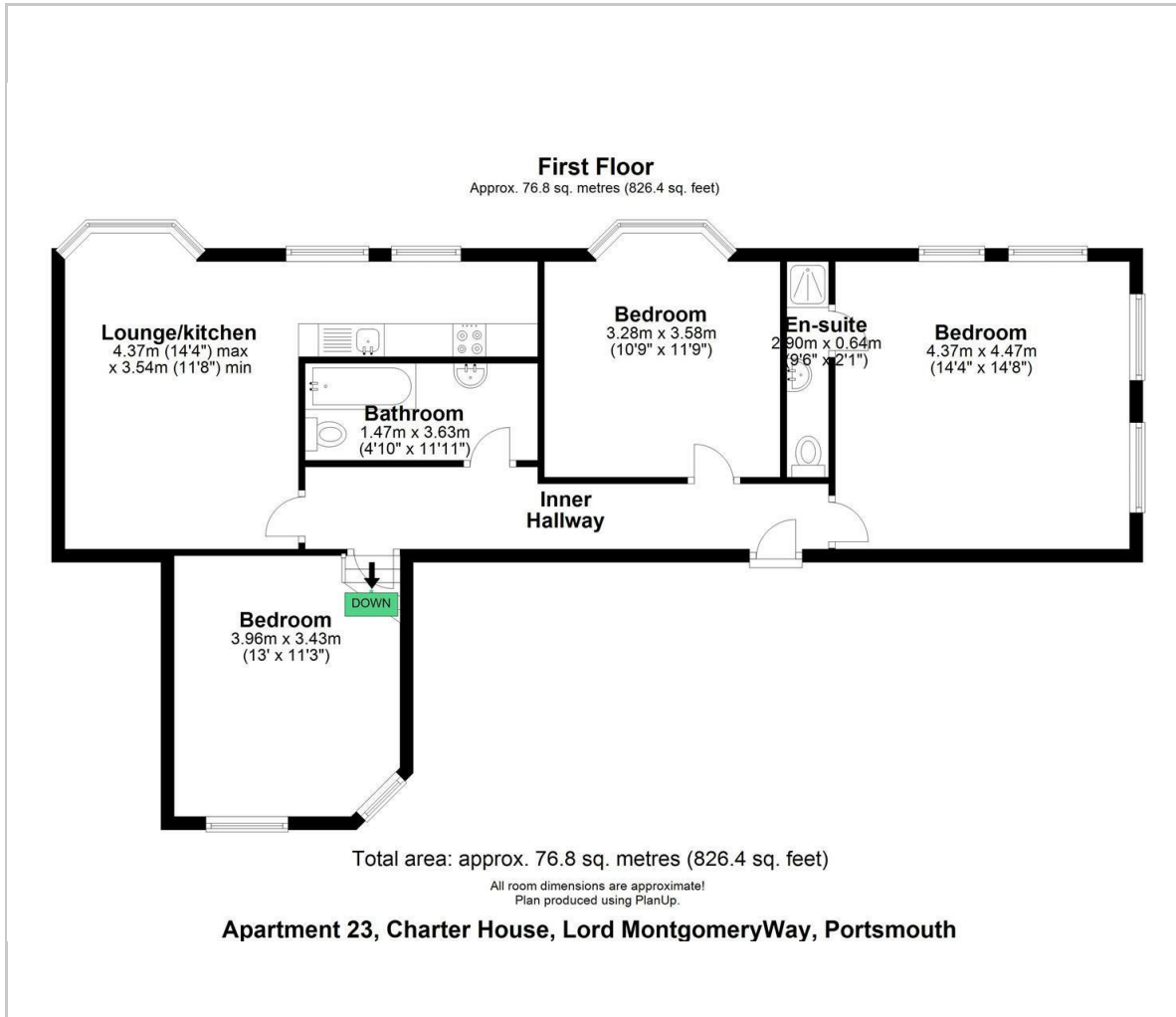
Tenure - Leasehold (99 years from 2003).

Service Charge approximately £2,760 p/a.





Floor Plan



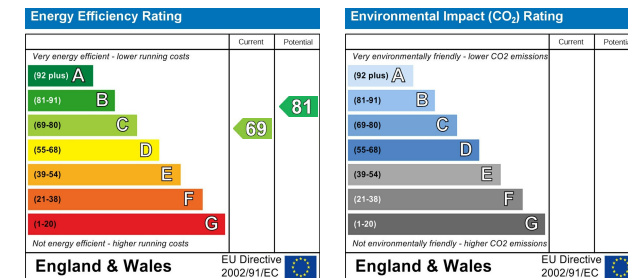
Viewing

Please contact our Southsea Office on 023 9273 2241 if you wish to arrange a viewing appointment for this property or require further information.

Area Map



Energy Efficiency Graph



Tully & Co

157-159 Albert Road, Southsea, Portsmouth, Hampshire, PO4 0JW

023 9273 2241 Email: sales@tullyand.co

Tully's