



6 Delamere Road, Southsea, PO4 0JA

£1,200 Council Tax Band Deposit £1,384



Tully's

Floor Plan



Area Map



Accommodation

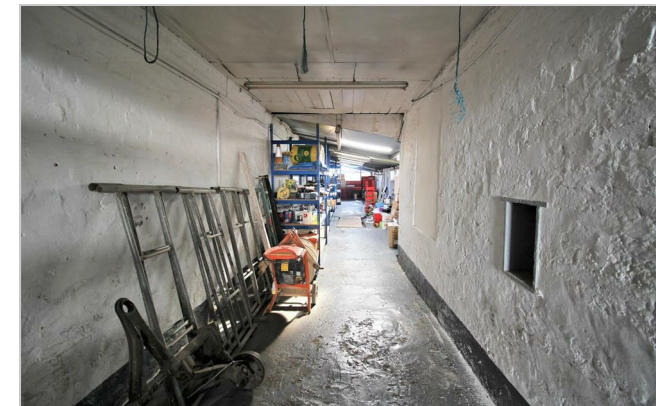
- SUPERB LIGHT INDUSTRIAL GARAGE
- IDEAL FOR CAR REPAIRS
- CENTRAL SOUTHSEA
- SUITE A VARIETY OF BUSINESSES
- LARGE AMOUNT OF STORAGE AVAILABLE
- CAR REPAIRS OR REFURBISHMENT
- £1200 PCM

Viewing

Please contact our Southsea Office on 023 9273 2241 if you wish to arrange a viewing appointment for this property or require further information.

Energy Efficiency Graph

Energy Efficiency Rating		Current	Potential
Vary energy efficient - lower running costs			
(92-100) A			
(81-91) B			
(69-80) C			
(55-68) D			
(39-54) E			
(21-38) F			
(1-20) G			
Not energy efficient - higher running costs			
England & Wales		EU Directive 2002/91/EC	



157-159 Albert Road, Southsea, Portsmouth, Hampshire, PO4 0JW
023 9273 2241 Email: tully@tullyand.co lettings@tullyand.co

Tully's