

Ashtons



11 Limetree Court YO30 6AD

£1,450 Per Month

2



2



1



C



A stunning two bedroom first floor apartment offered for let on a furnished basis and accompanied by one allocated parking space. The property is located on this tree lined street just off Bootham and the benefit of being within walking distance to the City Centre, Train Station as well as St Peters and Bootham School. The apartment is finished to a high standard and comprises of an entrance hallway leading through to a large open plan living room and kitchen with gas hob and oven, integrated fridge/freezer and dishwasher. The main bedroom benefits from an en-suite shower room,

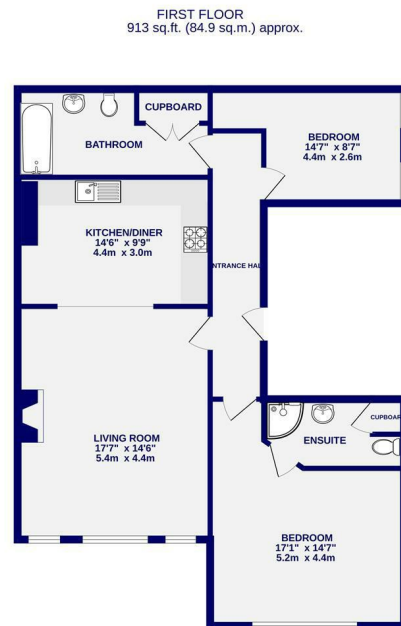
second bedroom with a single bed (please note that this bed is optional and can be removed)

The family bathroom includes a bath, heated towel rail, WC and basin. There is also a separate utility cupboard in the bathroom which houses a washing machine.

1 allocated parking space & Bike storage

Available NOW

Council Tax Band - E / EPC Rating C / Deposit £1550 / Initial 6 Month tenancy



TOTAL FLOOR AREA: 913 sq.ft. (84.9 sq.m.) approx.
Whilst every attempt has been made to ensure the accuracy of the floorplan, measurements of rooms and any other areas are approximate. It is advised to view the property and verify the accuracy of the measurements.
Note: Areas are not responsible for any errors, omissions or misstatements. This plan is for illustrative purposes only and should be used as such by any prospective purchaser. The authors, systems, and applications shown have not been tested and are provided as is for your reference.
Made with Metaphor 0025



Ashtons Lettings



01904 731404



lettings@ashtonsnet.com

