

The Ashtons logo is displayed in white text on a dark blue rectangular background in the top right corner. The letter 'A' is stylized with a green swoosh underneath it.

# Ashtons



25 Brownlow Street YO31 8LW

£1,200 Per Calendar Month

2



1



1



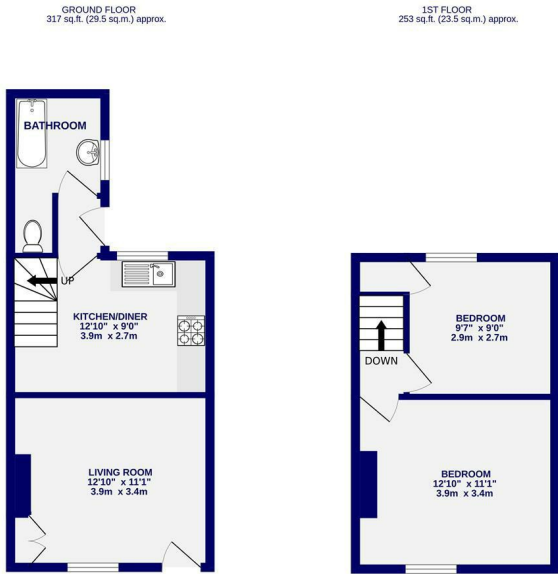
D





A charming two bedroom mid terraced house in a central location, nestled between Huntington and Haxby Road. The location benefits from being within walking distance to the city centre and hospital as well as having convenient vehicle access to the outer ring road. Offered for let on an unfurnished basis the property briefly comprises of a front facing living room with alcove shelving and ornamental fireplace; contemporary kitchen diner with an array of wall and base units, equipped with oven, hob, fridge freezer, microwave and washer; ground floor bathroom with shower over bath. To the first floor are two double bedrooms. Externally the property benefits from a rear courtyard and on street permit parking.

Available Early March / Long Term Tenancy / Deposit £1300 / Council Tax Band B / EPC Rating D / Pet considered



TOTAL FLOOR AREA: 571 sq.ft. (53.0 sq.m.) approx.  
Whilst every attempt has been made to ensure the accuracy of the floorplan, measurements of rooms and any other areas are approximate. It is advised that the prospective tenant verify the measurements.  
Note: Areas are not responsible for any error, omission or misstatement. The plan is for illustrative purposes only and should be used as such for any prospective tenant. The contents, systems and appliances shown have not been tested and are guaranteed as to their operation.  
Made with Mapbox (2020)

