

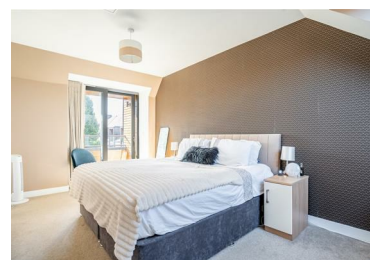


## 22 Meadlands Mews, York, YO31 0WD £1,850 Per Month



This wonderful and immaculately presented town house boasts flexible and spacious accommodation, benefiting from three good sized bedrooms and a low maintenance rear garden and allocated parking. Located to the east of York on the popular Derwenthorpe development, ideally placed for easy access to the City centre, good transport links and many local amenities. The internal accommodation comprises of an entrance hall, ground floor WC, a well proportioned lounge/diner with French doors to the rear and a modern fitted kitchen with integrated appliances. To the first floor are two double bedrooms, landing with space for an office/study area and a house bathroom. The master bedroom is placed on the floor above boasting a balcony, Built in wardrobes and an en suite shower room. Externally, there is an enclosed rear garden with raised planters, decking, paved patio area and shed. There is also allocated parking. The property is heated from the estate's eco-friendly, biomass boiler and the local community park

- MODERN TOWN HOUSE
- THREE DOUBLE BEDROOMS
- LOUNGE / DINER
- KITCHEN WITH APPLIANCES
- AVAILABLE NOVEMBER
- UNFURNISHED
- TWO BATHROOMS
- ENCLOSED GARDEN
- GROUND FLOOR WC



5 High Petergate, York, North Yorkshire, YO1 7EN  
Tel: 01904 731404 Email: [lettings@ashtonsnet.com](mailto:lettings@ashtonsnet.com)