

Ashtons

71 Bishopfields Drive YO26 4WY

£1,300 Per Month

2



2



1



B

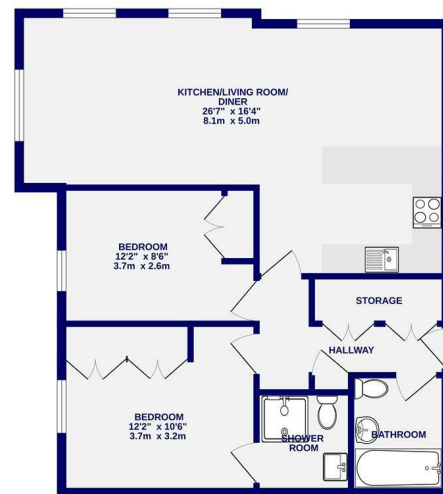




Located on this highly popular development within walking distance of the city centre and station is this two bedroom second floor modern apartment offered to let on a part furnished basis. The property comprises entrance hall with storage leading through to an open plan living kitchen area. The kitchen is equipped with electric oven and hob, washing machine, dishwasher, fridge and freezer. The living area comes with the sofa and benefits from dual aspect windows and French doors with Juliette balcony. Master double bedroom with wardrobes and ensuite shower room. Second double bedroom with wardrobes. Bathroom with shower over bath. Large store cupboard on the landing. Allocated parking space.

Available 11th November / Council Tax Band C / Deposit £1400 / 12 Month Tenancy / EPC Rating B

1ST FLOOR  
736 sq.ft. (68.4 sq.m.) approx.



TOTAL FLOOR AREA: 736 sq.ft. (68.4 sq.m.) approx.  
While every effort has been made to ensure the accuracy of the floorplan, measurements of rooms and any other areas are approximate. It is advised that the prospective tenant verify the measurements of the rooms.  
The plan does not show all furniture and fittings. It is intended to show the general layout of the property.  
Measurements are only for guidance and should not be used as a basis for any prospective purchase. The landlord, agent and any other person involved in the sale of the property shall not be liable for any loss or damage arising from the use of the floorplan.  
Made with Metaphor 12/24



Ashtons Lettings



01904 731404



lettings@ashtonsnet.com

