

Ashtons

7 Dower House Dower Chase YO19 6JF

£1,100 PCM

2



1



1



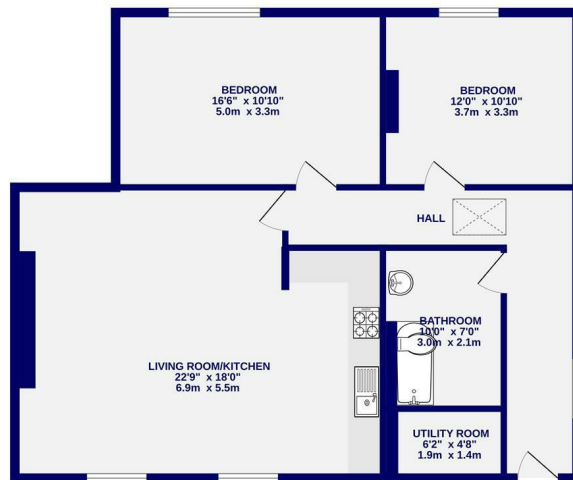
E



A stunning large first floor apartment located within this converted period stately home in the village of Escrick to the South of York. Offered unfurnished and comprising entrance hall, large open plan kitchen / living / dining. The living/kitchen area has double height vaulted ceilings. Kitchen with fridge/freezer, oven/hob. Utility with washing machine. Two double bedrooms. Bathroom with shower over the bath. Double glazing. Electric heating. Allocated and visitor parking. Available now.

Council Tax Band D / 12 Month Tenancy / Deposit £1200 / EPC Rating E

GROUND FLOOR
916 sq.ft. (85.1 sq.m.) approx.



TOTAL FLOOR AREA: 916 sq.ft. (85.1 sq.m.) approx.
While every attempt has been made to ensure the accuracy of the floorplan, measurements of rooms and any other areas are approximate. It is advised to view the property and verify all dimensions. This plan is for illustrative purposes only and should be used as such for any prospective purchaser. The contents, layout and appearance shown here are for illustrative purposes and are not guaranteed to be true.



Ashtons Lettings

01904 731404

lettings@ashtonsnet.com

