

Ashtons

30 Bellerby Court Palmer Lane Hungate YO1 7AF

£1,675 Per Month

2



2



1



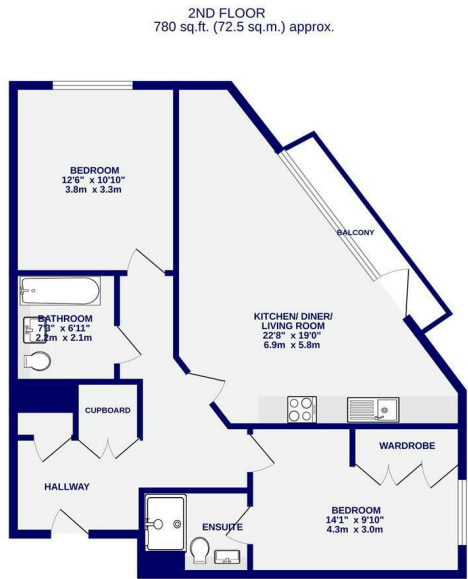
B



A contemporary two bedroom apartment, part of the Hungate development in the heart of the city centre. Offered on a fully furnished basis, the apartment comprises of entrance hallway with utility cupboard; spacious open plan living kitchen with french doors out to the balcony overlooking the city and a kitchen equipped with integrated appliances; primary bedroom with ensuite shower room; second double bedroom and bathroom with shower over bath. There are also the advantages of an entry phone system, double glazing, underfloor heating, and an internal air purification system. Outside the development a the delightful communal garden.

No onsite parking however there are car parks within a few minutes walk for which season passes can be obtained by seperate arrangement.

Available 1st August / 12 Month Tenancy / Deposit £1775 / EPC Rating B / Council Tax Band D



TOTAL FLOOR AREA: 780 sq.ft. (72.5 sq.m.) approx.
While every effort has been made to ensure the accuracy of the floorplan, measurements of rooms and any other areas are approximate. It is advised to the prospective tenants to verify the actual measurements of the rooms and any other areas of the property. The floorplan is for illustrative purposes only and should be used as such for any prospective tenants. The fixtures, fittings and appliances shown may be subject to change without notice.



Ashtons Lettings

01904 731404

lettings@ashtonsnet.com

