

The Ashtons logo is displayed in white text on a dark blue rectangular background in the top right corner. The word "Ashtons" features a green leaf-like graphic element integrated into the letter 'A'.

# Ashtons



5 Albert Court Shipton Street YO30 7EH

£1,100 PCM

2



1



1



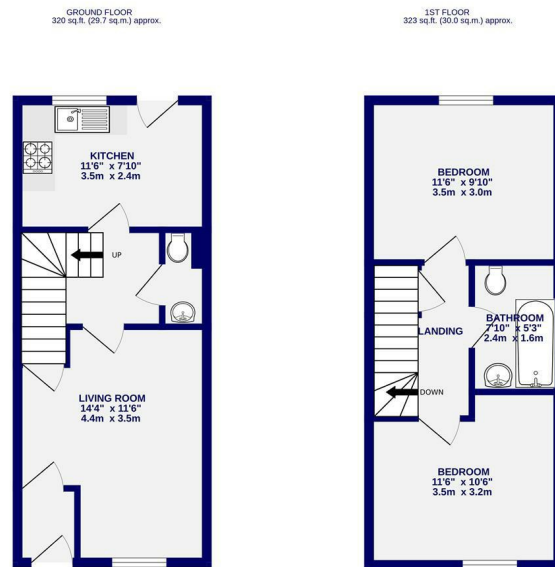
C





A two bedroom house, set within a quiet development off Shipton Street, close to the city centre and hospital. Offered for let on an unfurnished basis the accommodation comprises of entrance vestibule; living room; dining kitchen with appliances to include oven, hob and washing machine, with space for a fridge freezer. To the first floor are two double bedrooms and house bathroom with shower over bath. To the rear is a courtyard with shed. The property comes with one allocated parking space.

Available Now / 12 Month Tenancy / Deposit £1200 / Council Tax Band B / EPC Rating C



TOTAL FLOOR AREA: 643 sq.ft. (59.7 sq.m.) approx.  
While every effort has been made to ensure the accuracy of the description, representations of all rooms and any other areas are approximate. A disclaimer is the plan for prospective tenants to view the property in person. The agent and its representatives shall not be responsible for any errors, omissions or misstatements. This plan is for illustrative purposes only and should be used as a guide only for prospective tenants. The actual rooms, fixtures and appliances shown may vary from those described and represented as to their quantity.



Ashtons Lettings

01904 731404

lettings@ashtonsnet.com

