



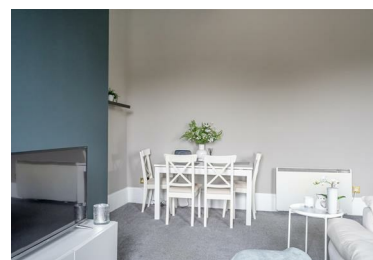
7 Dower House, Escrick, YO19 6JF  
£1,150 PCM



A stunning large first floor apartment located within this converted period stately home in the village of Escrick to the South of York. Offered unfurnished and comprising entrance hall, large open plan kitchen / living / dining. The living/kitchen area has double height vaulted ceilings. Kitchen with fridge/freezer, oven/hob. Utility with washing machine. Two double bedrooms. Bathroom with shower over the bath. Double glazing. Electric heating. Allocated and visitor parking. Available now.

Council Tax Band D / 12 Month Tenancy / Deposit £1250 / EPC Rating E

- LARGE APARTMENT
- TWO BEDROOMS
- COVERVERTED STately HOME
- ALLOACTED PARKING
- AVAILABLE NOW
- UNFURNISHED
- VILLAGE LOCATION
- VAULTED CEILINGS WITH BEAMS
- OPEN PLAN LIVING AREA



5 High Petergate, York, North Yorkshire, YO1 7EN  
Tel: 01904 731404 Email: [lettings@ashtonsnet.com](mailto:lettings@ashtonsnet.com)