

The Ashtons logo is displayed in white text on a dark blue rectangular background in the top right corner. The word "Ashtons" is written in a clean, sans-serif font, with a small green leaf-like graphic element integrated into the letter 'A'.

Ashtons



12 Cherry Paddock YO32 3DQ

£1,000 PCM

2



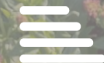
1



1

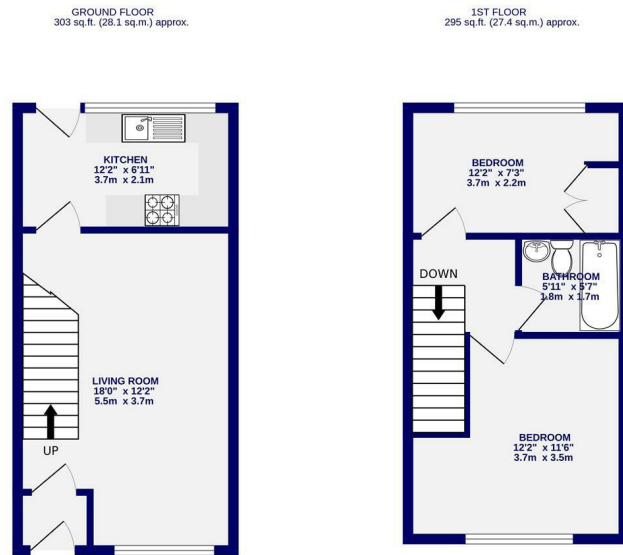


C



A two bedroom, mid terrace house in the popular village of Haxby within walking distance of local amenities and transport links to city centre. Having undergone redecoration and new flooring without, the property is offered unfurnished and briefly comprises of entrance hallway; spacious living room; kitchen with gas cooker, plumbing for washing machine and space for fridge freezer; rear door from kitchen leads out to a sizeable garden. To the first floor is a double bedroom; well sized single bedroom and bathroom with shower over bath. The property comes with a single garage. On street parking.

Available Now / 12 Month Tenancy / Deposit £1100 / Council Tax Band B / EPC Rating C



TOTAL FLOOR AREA: 598 sq.ft. (55.5 sq.m.) approx.
Whilst every attempt has been made to ensure the accuracy of the floorplan, measurements of rooms and any other details are approximate. It is advised that prospective buyers should verify the measurements and details of the property before making any offer. The floor plan is for illustrative purposes only and should not be used as a basis for any prospective purchase. The version, systems and appliances shown have not been visited and are given as to their availability.
Made with Metropac C2025



High Petergate Letters

01904 731404

lettings@ashtonsnet.com

