

The Ashtons logo is displayed in white text on a dark blue rectangular background. The word "Ashtons" is written in a clean, sans-serif font, with a green swoosh underline beneath the letter 'A'.

Ashtons



21 Neptune House Olympian Court YO10 3UD

£995 PCM

2



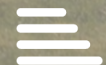
1



1



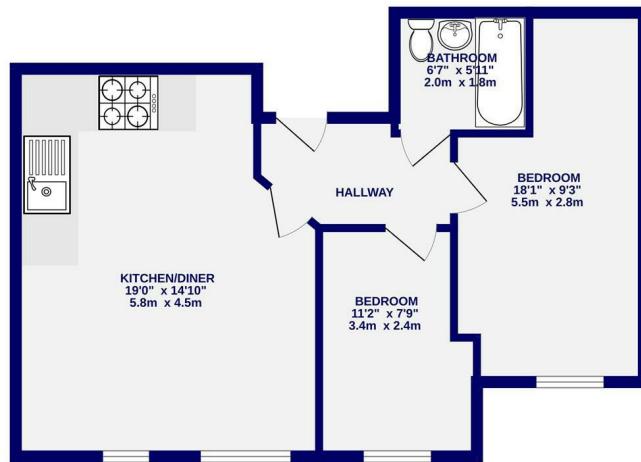
C



****WE ARE NOW FULLY BOOKED FOR VIEWINGS****

A two bedroom second floor apartment within a popular residential development just off Lawrence St, within walking distance to the city centre and transport links. Available to let furnished or unfurnished. The accommodation briefly comprises entrance hallway; spacious open plan living dining area, kitchen equipped with oven, hob, washing machine, fridge freezer; double bedroom; house bathroom with shower over bath; smaller double bedroom. The apartment benefits from an allocated parking space.

Available 10th May / 12 Month Tenancy / Deposit £1095 / Council Tax Band C



TOTAL FLOOR AREA: 571 sq.ft. (53.1 sq.m.) approx.
Whilst every effort has been made to ensure the accuracy of the floorplan, measurements are given and only approximate dimensions are shown. It is not intended to be used as a legal document. The plan is for illustrative purposes only and should be used as such by any prospective purchaser. The services, systems and appliances shown have not been tested and no guarantee as to their operation.
Made with Metropix 02/20



Ashtons Lettings

01904 731404

lettings@ashtonsnet.com

We are now fully booked for viewings on this property.

Please let us know if you see any other available properties you are interested in viewing.

Ashtons

