

The Ashtons logo is displayed in white text on a dark blue rectangular background in the top right corner. The word "Ashtons" features a green swoosh under the letter 'A'.

# Ashtons



2

3



1



1



C



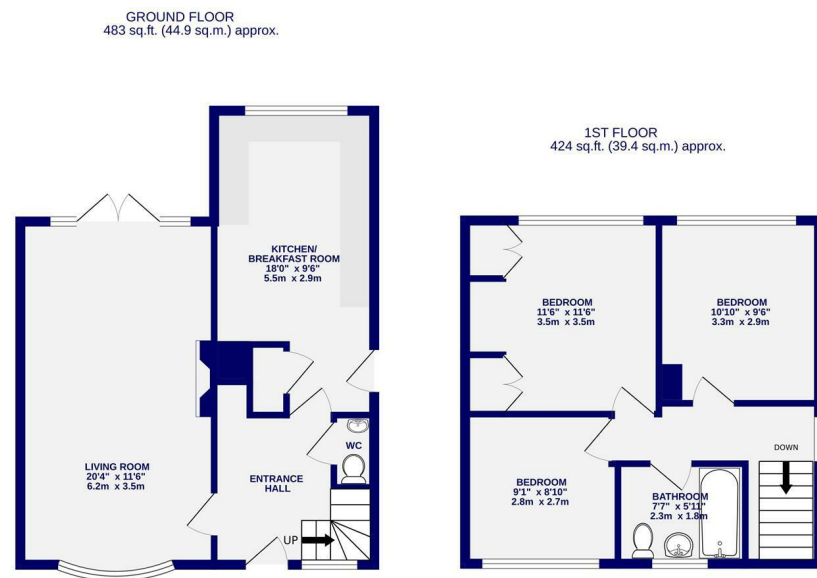
3 Claygate Appletree Village, Heworth YO31 0NW

£1,400 PCM



A spacious three bedroom semi detached house in a quiet cul-de-sac in Appletree Village, well located for local schools and transport links to the city centre. The property boasts a large garden, garage and driveway parking. Offered for let on an unfurnished basis the accommodation briefly comprises of entrance hallway with WC; bright and airy living room with french doors to patio; newly renovated kitchen with ample storage, oven, hob, fridge freezer, washing machine and integrated dishwasher. To the first floor are three well proportioned bedrooms, one with fitted storage, and the house bathroom with shower over bath.

Available Now / 12 Month Tenancy / Deposit £1500 / Council Tax Band C / EPC Rating C



Ashtons

OnTheMarket

rightmove

Zoopla

Instagram

Facebook

The Property Ombudsman

tsi  
APPROVED CODE  
TRADING STANDARDS UK

High Petergate Letters

01904 731404

lettings@ashtonsnet.com