

The Ashtons logo is located in the top right corner. It features the word "Ashtons" in a white, sans-serif font, with a green leaf-like graphic element integrated into the letter 'A'. The logo is set against a dark blue rectangular background.

The Shippon Moor Monkton YO26 8JQ

£1,850 Per Calendar Month

3



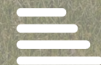
1



1



B

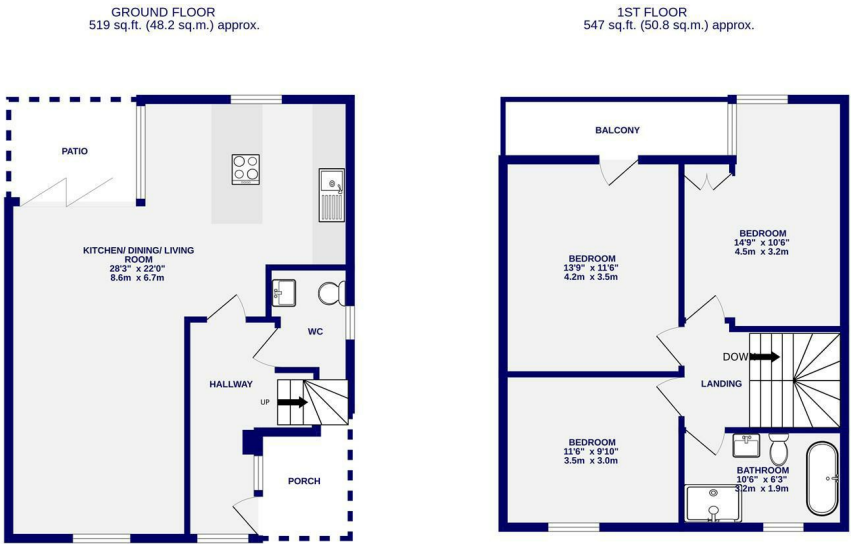


A brand new barn conversion, forming one third of a small development blending modern living with a countryside location, near to the popular village of Moor Monkton whilst being well located for York and Harrogate.

The accommodation briefly comprises entrance hallway; a bright and spacious living space with fully equipped kitchen and panoramic views over the fields to the rear, with doors opening out onto a full patio and garden. To the first floor are three well proportioned bedrooms and the house bathroom with four piece suite. The main bedroom has access to a private terrace, an idyllic space to enjoy a morning coffee or alfresco breakfast.

The property comes with two parking spaces, one with electric power point.

Available Now / 12 Month Tenancy / Deposit £1950/ Council Tax Band TBC (not yet rated)



TOTAL FLOOR AREA : 1066 sq.ft. (99.0 sq.m.) approx.
Whilst every attempt has been made to ensure the accuracy of the floorplan, measurements of rooms and any other items are approximate. It is included in the plan the garages are not part of the overall floor area and no responsibility is taken for any error, omission or mis-statement. This plan is for illustrative purposes only and should be used as such by any prospective purchaser. The services, systems and appliances shown have not been tested and no guarantee as to their operability.
Made with Metropix ©2025

