

The logo for Ashtons, featuring the word "Ashtons" in a white, sans-serif font with a green leaf-like graphic element under the letter 'A', set against a dark blue rectangular background.

247 Chapelfields Road YORK YO26 5AE

£950 PCM

2



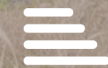
2



1



D

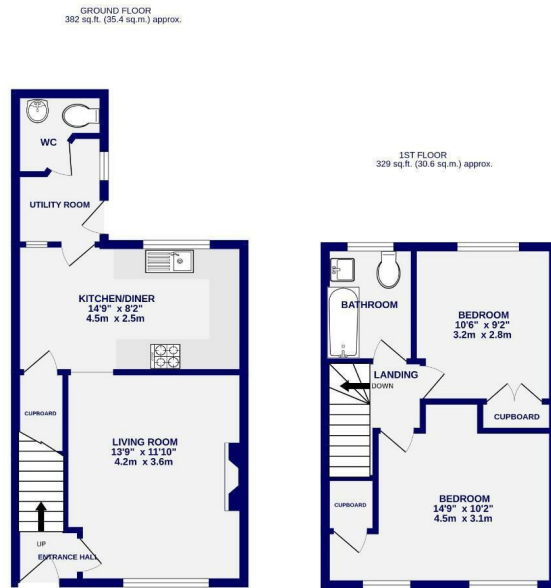




Located to the West of York, this mid terrace property is ideally located for access to the City Centre, Outer Ring Road and varied local amenities Acomb has to offer. Offered unfurnished. Internally the property offers an entrance hall which leads into the living room. Set to the rear of the property is the fitted kitchen with oven, gas hob and fridge freezer, an understairs storage cupboard, as well as a utility room with washing machine and WC. On the first floor are two double bedrooms, with built in storage, and a three piece bathroom. Externally the property offers a garden with lawn and patio, a shed for storage and driveway parking to the front.



Available Now / Deposit £1050 / Council Tax Band A / EPC Rating D



**TOTAL FLOOR AREA:** 710 sq ft. (66.0 sq.m.) approx.  
 Whilst every effort has been made to ensure the accuracy of the floorplan, measurements of rooms and any other areas are approximate. It should be noted that the measurements will vary slightly from the actual.  
 Room area and measurements are for guide only. Dimensions are approximate. The above floor plan does not represent any and should be used as such by any prospective purchaser. The services, systems and appliances shown hereon are not intended to represent an offer of any service.  
 Made with Metaphor 02/24



Ashtons Lettings

01904 731404

lettings@ashtonsnet.com