

Ashtons



9 Farro Drive YO30 6QQ

£1,300 Per Month

2



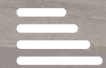
2



1



B

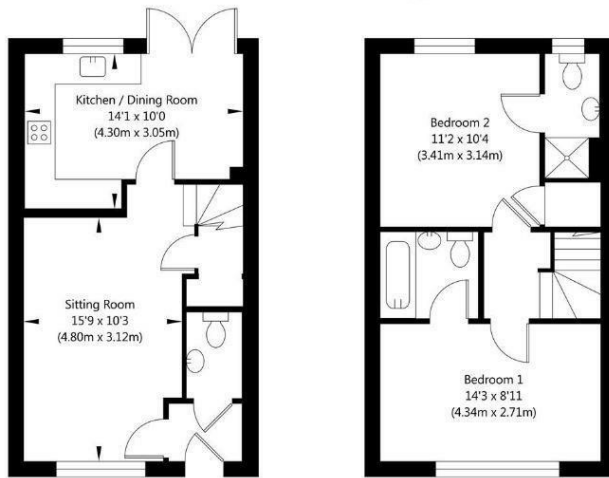


This two bedroom townhouse in a modern development to the north of the city, the property offers good links with the city centre and has easy access to Clifton Moor shopping park and the outer ring road. The property comes furnished and comprises; entrance hallway, cloakroom/W.C, lounge, modern kitchen diner with fridge freezer, double oven, gas hob, washing machine and patio doors to garden. To the first floor are two double bedrooms with en-suite bathrooms. Outside the property is a lovely lawned rear garden with patio area, shed and the huge advantage of two allocated parking spaces to the front.

Available 31st

Council Tax Band B / 12 Month Tenancy / Deposit: £1400 / EPC Rating B

Farro Drive, York, YO30 6QQ



Ground Floor:  
GROSS INTERNAL FLOOR AREA  
APPROX. 372 SQ. FT. / 34.52 SQ. M

First Floor:  
GROSS INTERNAL FLOOR AREA  
APPROX. 374 SQ. FT. / 34.77 SQ. M

NOT TO SCALE - FOR ILLUSTRATIVE PURPOSES ONLY  
APPROXIMATE GROSS INTERNAL FLOOR AREA 746 SQ. FT. / 69.29 SQ. M  
All measurements and fixtures including doors and windows are approximate and should be independently verified.  
www.exposurepropertymarketing.com © 2022



Ashtons Lettings

01904 731404

lettings@ashtonsnet.com