



4 Washburn Close, Germany Beck YO19 4AH

£1,400 Per Month

3



2



1



B

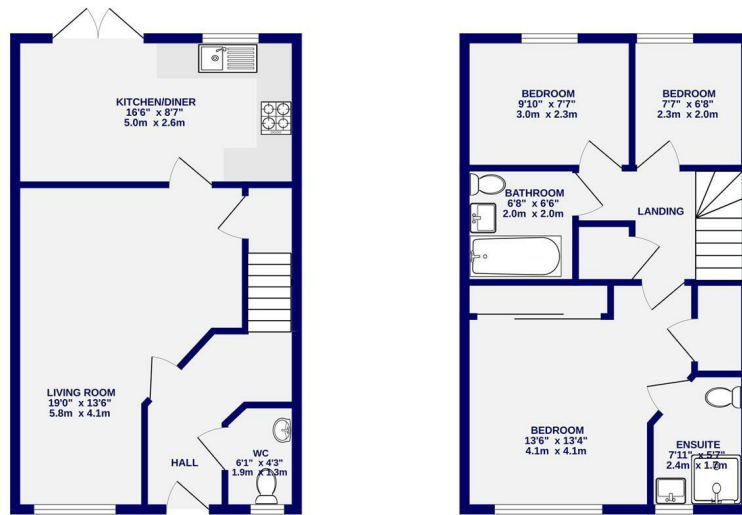


****WE ARE NOW FULLY BOOKED FOR VIEWINGS ON THIS PROPERTY****

A well finished, fully furnished three bedroom mid terraced house on the popular Germany Beck development. Set within the desirable suburb of Fulford, the property benefits from easy access to the outer ring road, links to the City Centre as well as local amenities. Arrive into the entrance hallway, with downstairs WC, through to a stylish living room with under stairs storage. The kitchen/diner overlooks the garden and is fully equipped with integrated appliances to include fridge freezer, washing machine, electric oven, hob, dishwasher & freestanding tumble dryer. The garden is neatly presented with patio area, lawn and finished with a lovely summer house that would double as a garden office. To the first floor is the front facing primary bedroom with fitted wardrobes and ensuite shower room, a second double bedroom and single bedroom currently acting as an office/study. The house bathroom provides shower over bath.

The property benefits from two allocated, off street parking spaces and gated access to the back garden, ideal for bicycle access.

Available 30th August / 12 Month Tenancy / Deposit £1500 / Council Tax Band C / EPC Rating B



TOTAL FLOOR AREA: 912 sq.ft (84.7 sq.m.) approx.
While every attempt has been made to ensure the accuracy of the foregoing measurements of rooms and any other items are approximate. If included in the plan the measurements will form part of the overall floor area and no responsibility is taken for any error, omission or mis-statement. The plan is for illustrative purposes only and should be used as such by any prospective purchaser. The services, systems and appliances shown have not been tested and no guarantee as to their operability.
Made with Metropix ©2024



Ashtons Lettings

01904 731404

lettings@ashtonsnet.com