



307 Ryedale House 58-60 Piccadilly YO1 9NX

£2,200 Per Month

2



2



1



C



A fine example of cosmopolitan living in the form of a two bedroom furnished apartment within Ryedale House, a contemporary private development in the heart of York's historic core beside the River Foss. The apartment is located on the third floor and comprises; entrance hallway with utility and storage cupboard, through to an open plan kitchen living space. With floor to ceiling, dual aspect windows with a sliding door to the Juliette balcony, the living room is wonderfully bright and thoughtfully furnished, whilst the kitchen is equipped with premium integrated Neff appliances. There are two double bedrooms, one with ensuite shower room. There is underfloor heating throughout the apartment.

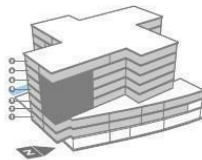
No on-site parking

Available Mid August (flexible) / 6 -12 month tenancies considered / Deposit £2300 / Council Tax Band E / EPC Rating C



Kitchen/Living/Dining Room	7050mm x 6020mm	23'1" x 19'9"
Bedroom 1	4010mm x 3910mm	13'2" x 12'10"
Bedroom 2	4065mm x 2770mm	13'4" x 9'1"

■ - Column



Apartments	
Floor 3: 3.7	Floor 5: 5.7
Floor 4: 4.7	Floor 6: 6.7



Ashtons Lettings

01904 731404

lettings@ashtonsnet.com