



10 Knavesmire Crescent YO23 1ES

£2,500 Per Month

3



2



2



D

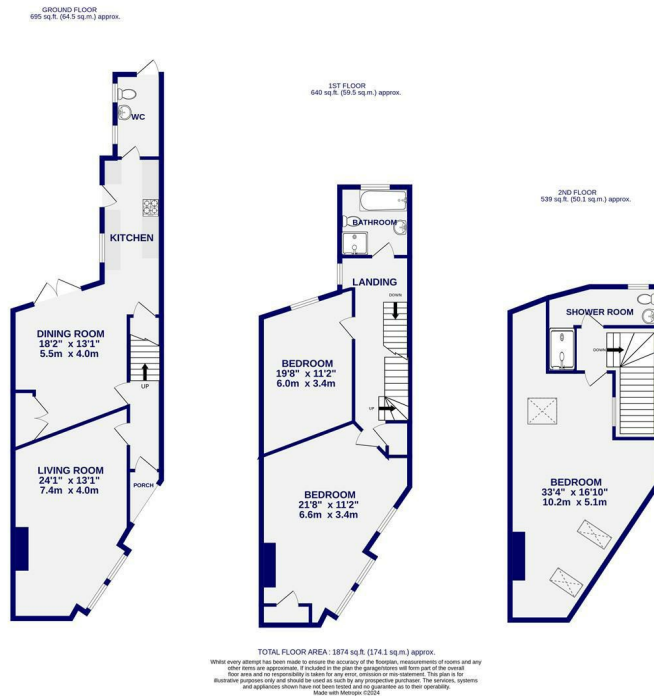


Located to the South West of York in one of the City's most sought after locations, this truly stunning period home is ideally located for access to varied commuter links and local amenities whilst enjoying wonderful, open views over the Knavesmire. The property has recently been modernised throughout and comes unfurnished.

The internal accommodation comprises an entrance hall, a living room with feature fireplace and bay window, large dining room with patio doors. The fitted kitchen boasts an array of contemporary style wall and base units, integrated dishwasher, oven, hob and space for a fridge freezer, utility room with WC, wash hand basin and plumbing for washing machine. To the first floor are two large double bedrooms, airy house bathroom. The loft has been converted into a fabulous primary bedroom with views over the Knavesmire and en-suite shower room.

To the rear of the property is an enclosed courtyard style garden with covered seating area for alfresco dining. It also benefits from two off street parking spaces to the front.

Available Mid June / 12 Month Tenancy / Deposit £2600 / EPC Rating D / Council Tax Band C / A pet considered.



Ashtons Lettings

01904 731404

lettings@ashtonsnet.com