



**Bartlams**

**64 Orton Lane, Wombourne, WV5 9AW**

# £ 685,000

**\*\*NO UPWARD CHAIN\*\*** Imposing traditional style detached residence of character standing elevated from Orton Lane on the northern outskirts of Wombourne village and a pleasant aspect of Orton Hills at the rear yet conveniently placed for the excellent village facilities and schools. Substantially extended to provide a well proportioned four-bedroom family home and includes plenty of private off-road parking with a double-width garage with a carport to the side. You are welcomed to the ground floor of this charming residence via a spacious porch leading into a welcoming hall featuring a convenient WC. The heart of the home unfolds into a cozy living room presenting a characterful fireplace as its centerpiece. Opposite, a spacious dining room connects to the well-appointed kitchen, complete with granite worktops along with ample wall and base units. Within the kitchen, discover modern conveniences including integrated appliances such as a dishwasher, microwave, cooker, and ceramic hobs, alongside practical features like carousel shelving and a one and a half sink with a drainer. Further enhancing functionality, a discreet pantry offers additional storage and convenient access to the garage, ensuring an excellent amount of storage. On the first floor you will be greeted by a generously sized landing that sets the tone for the rest of the floor. Discover four well-proportioned bedrooms, with three positioned towards the front and the third largest room to the rear, each offering ample storage space to accommodate personal belongings with ease. The principal bedroom stands out with its unique ensuite, showcasing a distinctive layout that includes a study accessible through its other side, providing a private and handy space for working from home needs. Meanwhile, the spacious family bathroom features a corner bath and enclosed corner shower, complemented by a wash hand basin. Notably, the toilet is situated separately next door but has the potential to be knocked through into the bathroom. Situated on approximately one acre of land extending up to Orton Hills, this residence boasts an impressive exterior that perfectly complements its surroundings. An established front garden, surrounded by meticulously maintained hedges and a generous amount of parking offers convenience for residents and guests alike. At the rear, a private and level garden awaits, offering an ideal and private space for outdoor enjoyment. Accessible from both sides of the property, as well as from the double garage and kitchen, this garden provides seamless connectivity between indoor and outdoor living spaces, ideal for entertaining or simply relaxing amidst the natural aspect at the rear. The outdoor space at Orton Lane offers endless possibilities for creating fantastic memories in this capturing family home. Contact our local team to view this spectacular property! We are advised by our client that this property is; Freehold, Council Tax Band - G, EPC - tbc.

- NO UPWARD CHAIN.
- EXTENDED FOUR-BEDROOM DETACHED FAMILY HOME.
- OFF-ROAD PARKING.
- HIGHLY POPULAR RESIDENTIAL ADDRESS IN WOMBOURNE.
- CONVENIENT FOR VILLAGE AMENITIES AND LOCAL SCHOOLING.
- OCCUPYING A STUNNING ELEVATED PLOT STRETCHING OVER APPROXIMATELY ONE ACRE.
- FAMILY BATHROOM, EN-SUITE AND DOWNSTAIRS W.C.
- FREEHOLD. COUNCIL TAX BAND - G. EPC - TBC.



Freehold  
COUNCIL TAX BAND - G  
EPC RATING -

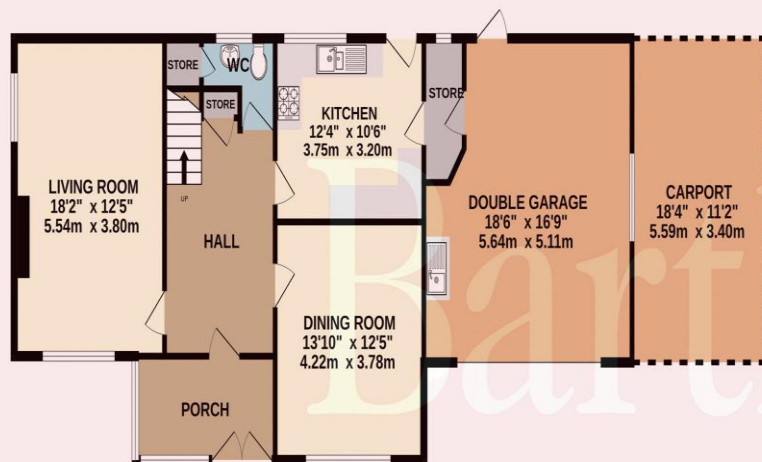
**NOTICE:** These particulars, although believed to be correct, do not constitute any part of an offer or contract. All statements contained in these particulars as to this property are made without responsibility and are not to be relied upon as statements or representations of warranty whatsoever in relation to property. Any intending purchaser must satisfy themselves by inspection or otherwise as to the correctness each of the statements contained in these particulars. All measurements are approximate and for illustrative purposes only. Photographs are produced for general information and it must not be inferred that any item shown is included in the sale.

**DISCLOSURE:** As a professional Estate Agency our clients employ us to look after their best interests. This includes providing them with full details of offers made to purchase their property. To ensure our obligations to our clients are met we need to check the status of all potential purchasers. If you make an offer on this property we will ask a member of The Finance Family to contact you to verify your status. They are a leading firm of Independent Financial Advisers and Mortgage Brokers. Should they transact any business resulting from our introduction then we may receive a commission.

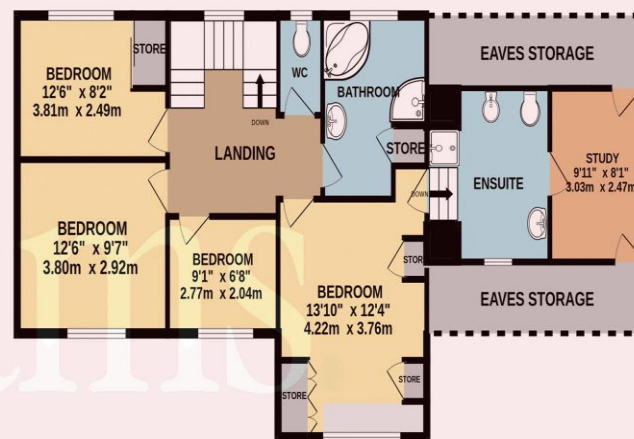
Bartlams



GROUND FLOOR  
1280 sq.ft. (118.9 sq.m.) approx.



1ST FLOOR  
1010 sq.ft. (93.8 sq.m.) approx.



TOTAL FLOOR AREA : 2290 sq.ft. (212.8 sq.m.) approx.

Whilst every attempt has been made to ensure the accuracy of the floorplan contained here, measurements of doors, windows, rooms and any other items are approximate and no responsibility is taken for any error, omission or mis-statement. This plan is for illustrative purposes only and should be used as such by any prospective purchaser. The services, systems and appliances shown have not been tested and no guarantee as to their operability or efficiency can be given.

Made with Metropix ©2024

PLEASE SIGN BELOW TO AGREE THAT THE DETAILS  
ARE ACCURATE TO THE BEST OF YOUR KNOWLEDGE

SIGNED: .....

DATE: .....

House on the Green High Street Wombourne Wolverhampton Staffordshire WV5 9DP

01902 894141

wombournesales@bartlams.co.uk

www.bartlams.co.uk



