



Duke Court, Pontes Avenue, Hounslow, TW3 3FL

£1,500 PCM

A purpose built ground floor one bedroom flat situated in this popular location with easy access to Hounslow town centre, Hounslow Central tube station, Hounslow mainline station and further transport links. The accommodation comprises lounge with balcony, modern kitchen, bedroom and modern bathroom. Benefits include double glazed windows, electric heating, communal gardens and allocated parking space. The property is offered on a part furnished basis and is available immediately.

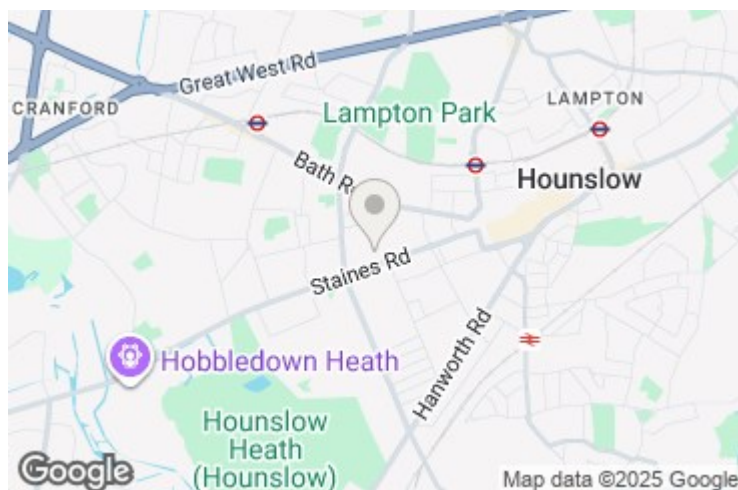
A partner of
The Guild Of Professional Estate Agents
 with a network of over 700 independent estate agents

Associated Office: 121 Park Lane, Mayfair, London W1K 7AG t 020 7318 7075

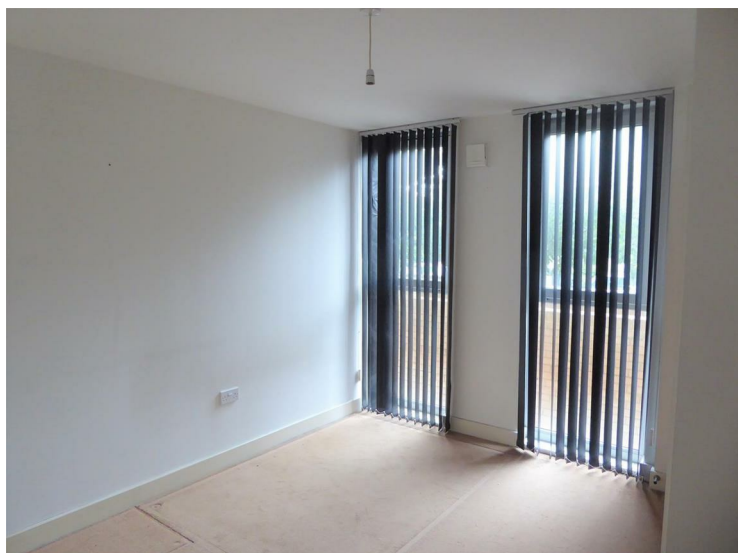
Lounge



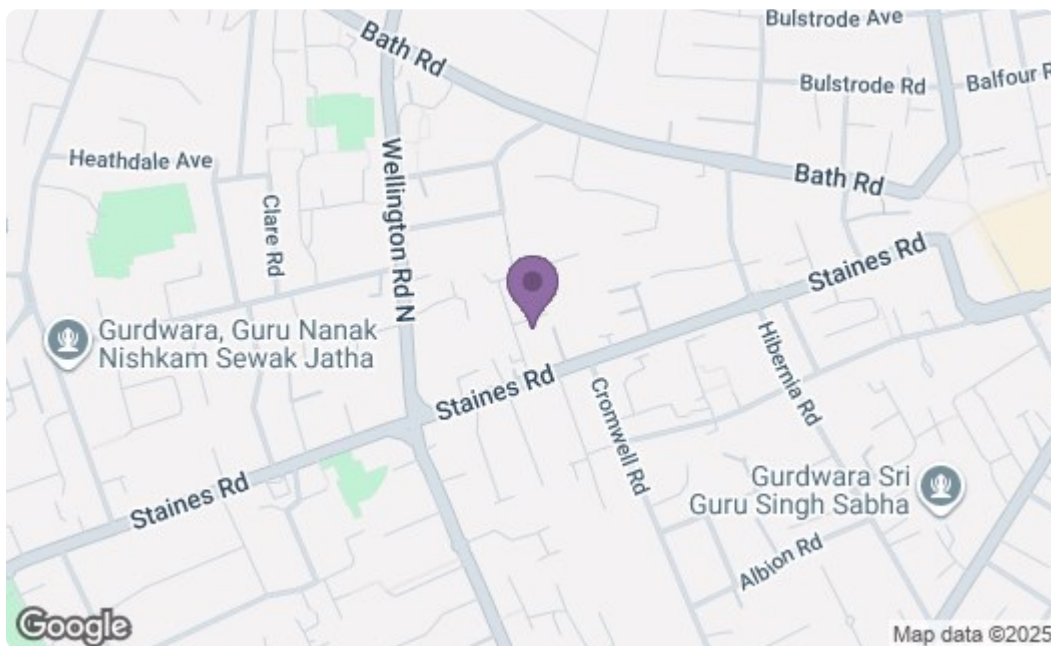
Kitchen



Bedroom



Bathroom



Energy Efficiency Rating		
	Current	Potential
Very energy efficient - lower running costs		
(92 plus) A		
(81-91) B		
(69-80) C		
(55-68) D		
(39-54) E		
(21-38) F		
(1-20) G		
Not energy efficient - higher running costs		
England & Wales EU Directive 2002/91/EC		
Environmental Impact (CO ₂) Rating		
	Current	Potential
Very environmentally friendly - lower CO ₂ emissions		
(92 plus) A		
(81-91) B		
(69-80) C		
(55-68) D		
(39-54) E		
(21-38) F		
(1-20) G		
Not environmentally friendly - higher CO ₂ emissions		
England & Wales EU Directive 2002/91/EC		

A partner of
The Guild Of Professional Estate Agents
 with a network of over 700 independent estate agents

Associated Office: 121 Park Lane, Mayfair, London W1K 7AG t 020 7318 7075