



## Bennett Close, Hounslow, TW4 5AE

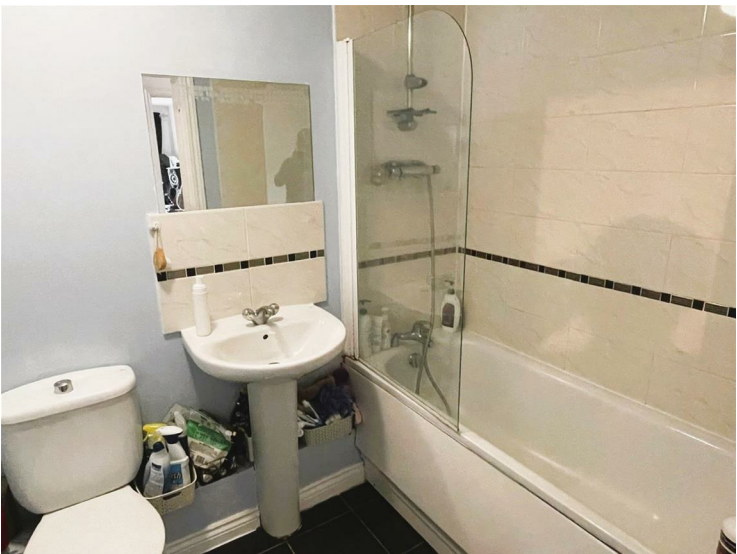
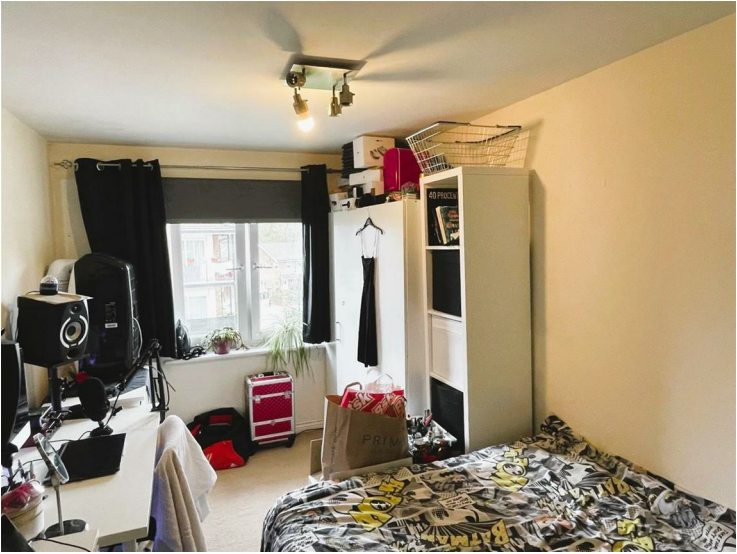
**£279,950**

A two bedroom purpose built second floor flat situated in this popular location with access to local shps and transport links. The accommodation comprises lounge with balcony, open plan modern kitchen, two bedrooms and modern bathroom. Benefits include double glazed windows, electric heating, communal gardens and allocation parking space. No Chain!

A partner of  
**The Guild Of Professional Estate Agents**  
 with a network of over 700 independent estate agents

Associated Office: 121 Park Lane, Mayfair, London W1K 7AG t 020 7318 7075



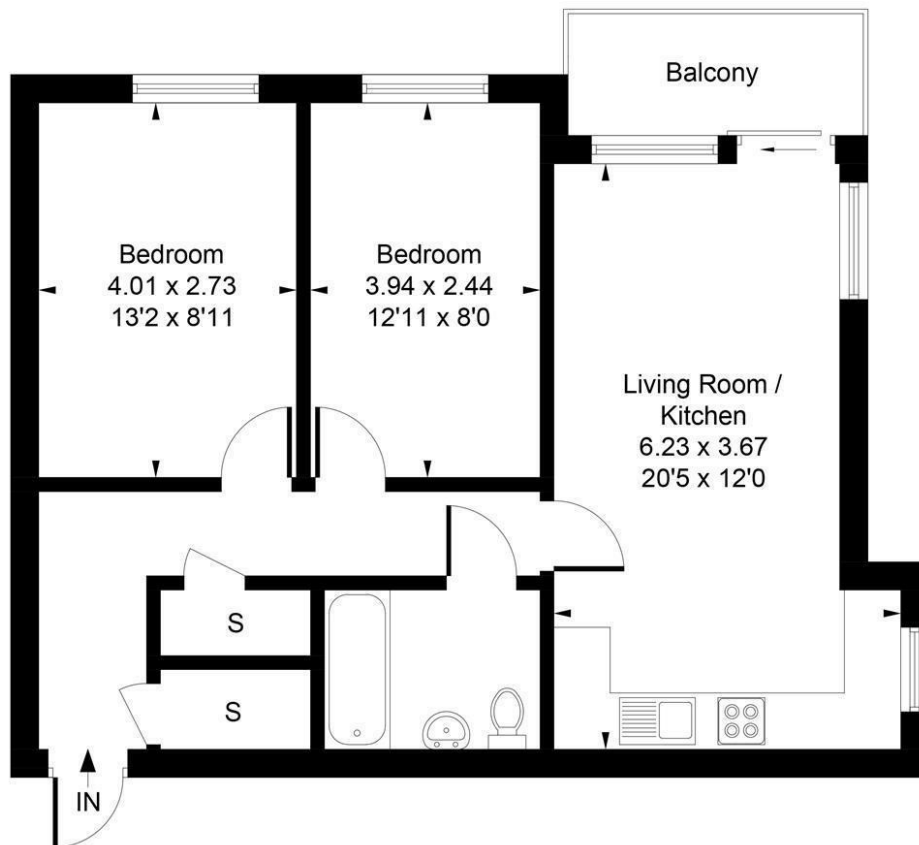






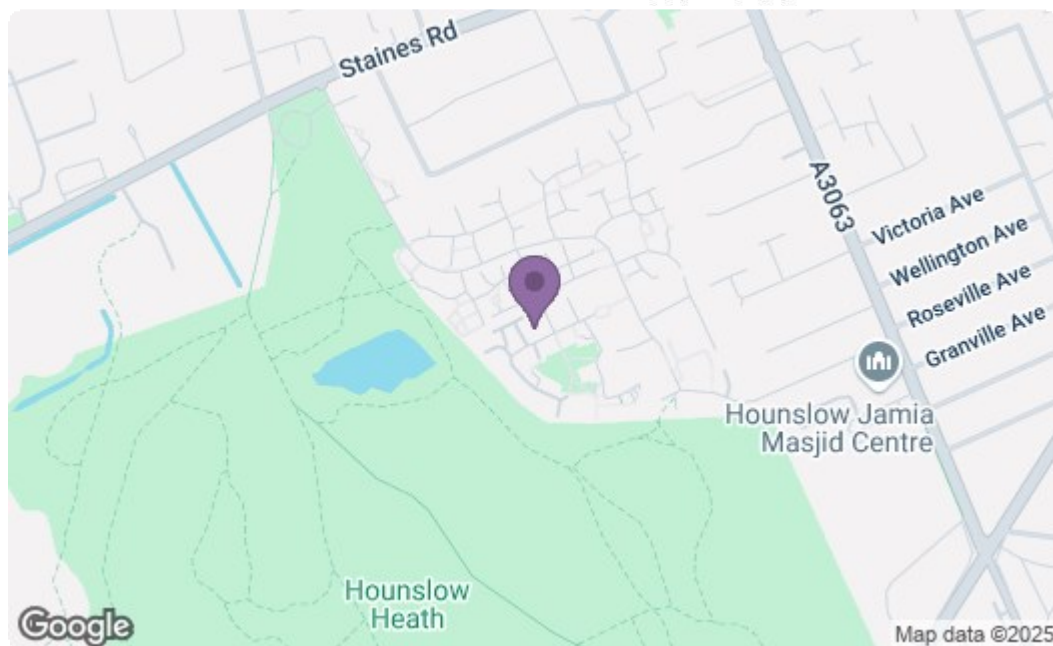
## Bennett Close, Hounslow, TW4 5AE

Approximate Gross Internal Area  
58.40 sq m / 629 sq ft



Whilst every attempt has been made to ensure the accuracy of the floor plan contained here, measurements of doors, windows, rooms and any other items are approximate and no responsibility is taken for any error, omission, or mis-statement. This plan is for illustrative purposes only and should be used as such by any prospective purchase.

Produced by [jcphotographystudio.com](http://jcphotographystudio.com)



Energy Efficiency Rating		
	Current	Potential
Very energy efficient - lower running costs		
(92 plus) <b>A</b>		
(81-91) <b>B</b>		
(69-80) <b>C</b>		
(55-68) <b>D</b>		
(39-54) <b>E</b>		
(21-38) <b>F</b>		
(1-20) <b>G</b>		
Not energy efficient - higher running costs		
<b>England &amp; Wales</b> EU Directive 2002/91/EC		
Environmental Impact (CO <sub>2</sub> ) Rating		
	Current	Potential
Very environmentally friendly - lower CO <sub>2</sub> emissions		
(92 plus) <b>A</b>		
(81-91) <b>B</b>		
(69-80) <b>C</b>		
(55-68) <b>D</b>		
(39-54) <b>E</b>		
(21-38) <b>F</b>		
(1-20) <b>G</b>		
Not environmentally friendly - higher CO <sub>2</sub> emissions		
<b>England &amp; Wales</b> EU Directive 2002/91/EC		

A partner of  
**The Guild Of Professional Estate Agents**  
with a network of over 700 independent estate agents

Associated Office: 121 Park Lane, Mayfair, London W1K 7AG t 020 7318 7075