



Rectory Road, Hounslow, TW4 7QE

£487,000

A three bedroom semi-detached family home situated in this popular residential location with access to Hounslow West tube station, shopping centre, bus routes, Heathrow Airport, M4 & A4. The accommodation comprises, on the ground floor, reception, kitchen/diner and utility room, on the first floor three bedrooms and family bathroom, outside front and rear gardens. The property also benefits from double glazed windows, central heating and is offered for sale with no onward chain.

A partner of
The Guild Of Professional Estate Agents
 with a network of over 700 independent estate agents

Associated Office: 121 Park Lane, Mayfair, London W1K 7AG t 020 7318 7075

Entrance Hallway

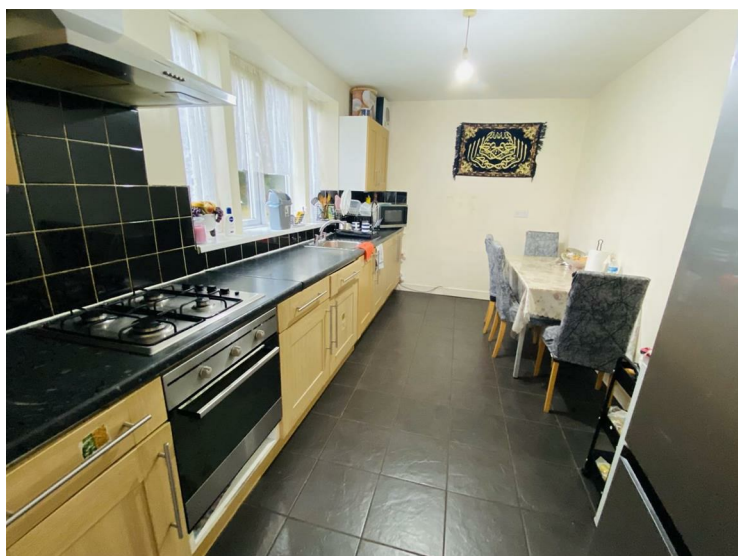
Side aspect double glazed window, radiator, laminate flooring, understairs cupboard.

Reception



Front aspect double glazed window, radiator, power point, laminate flooring.

Kitchen/Diner



Single drainer stainless steel sink unit with mixer tap and cupboard below, further wall and floor mounted units, built-in hob with oven below, extractor hood, space for fridge/freezer, double glazed window, part tiled walls, tiled flooring radiator.

Utility Room

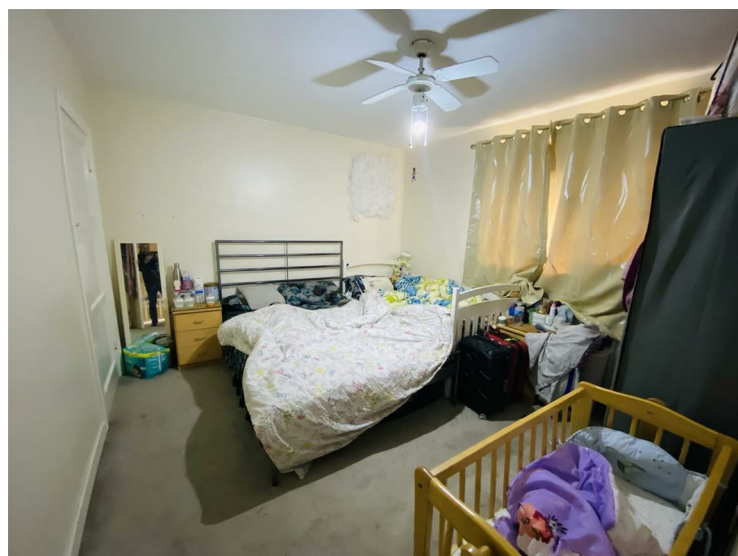


Space for washing machine, wall mounted boiler, tiled flooring, double glazed window.

First Floor Landing

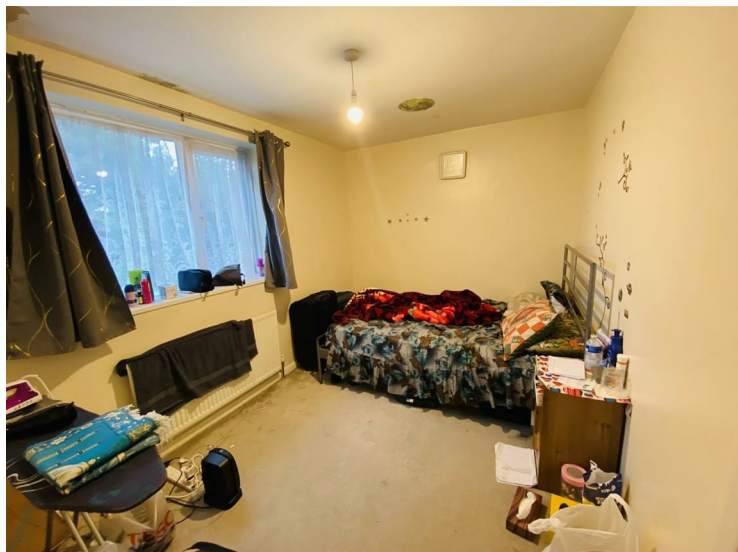
Side aspect double glazed window, access to loft, doors to rooms.

Bedroom One



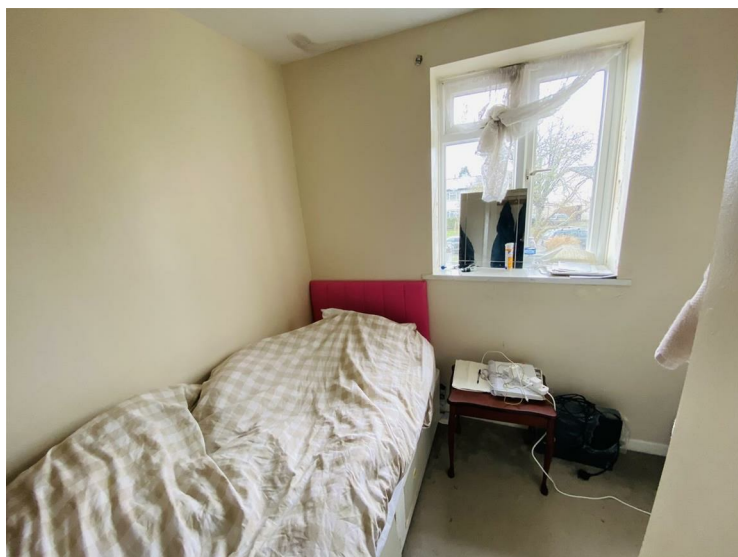
Front aspect double glazed window, radiator built-in cupboard.

Bedroom Two



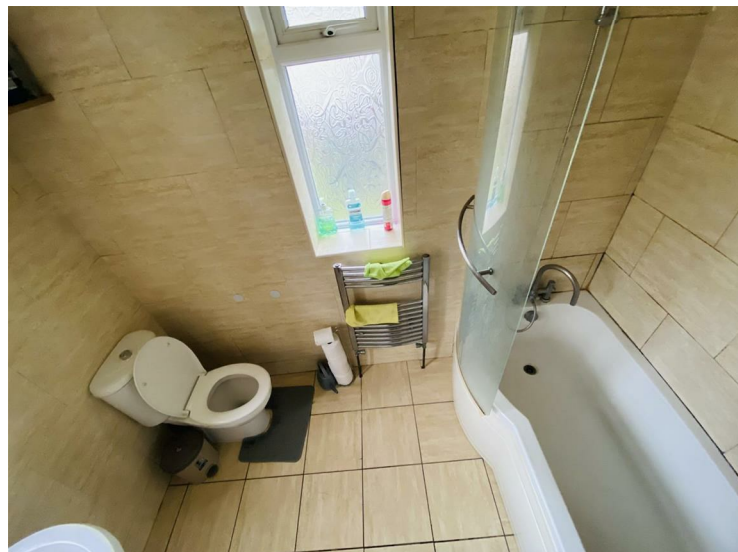
Rear aspect double glazed window, radiator, built-in cupboard.

Bedroom Three



Front aspect double glazed window, radiator, built-in cupboard.

Bathroom



White suite comprising panel enclosed bath, pedestal wash hand basin, low level w/c, tiled walls and flooring, double glazed window, heated towel rail.

Outside

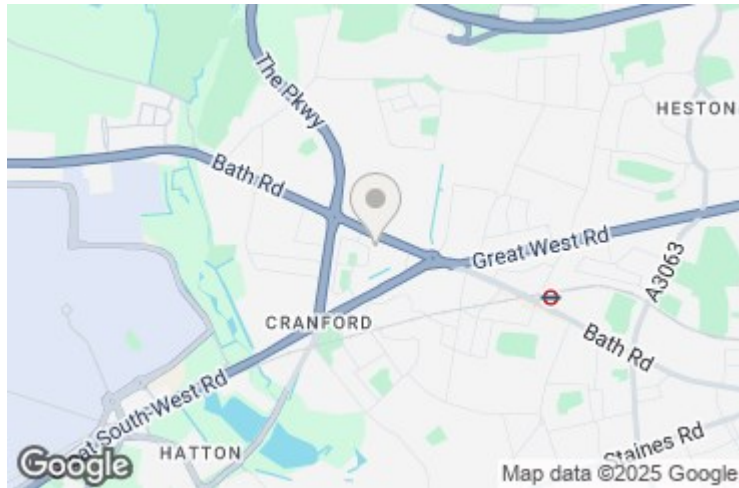
Rear Garden



Laid to lawn area, storage shed.

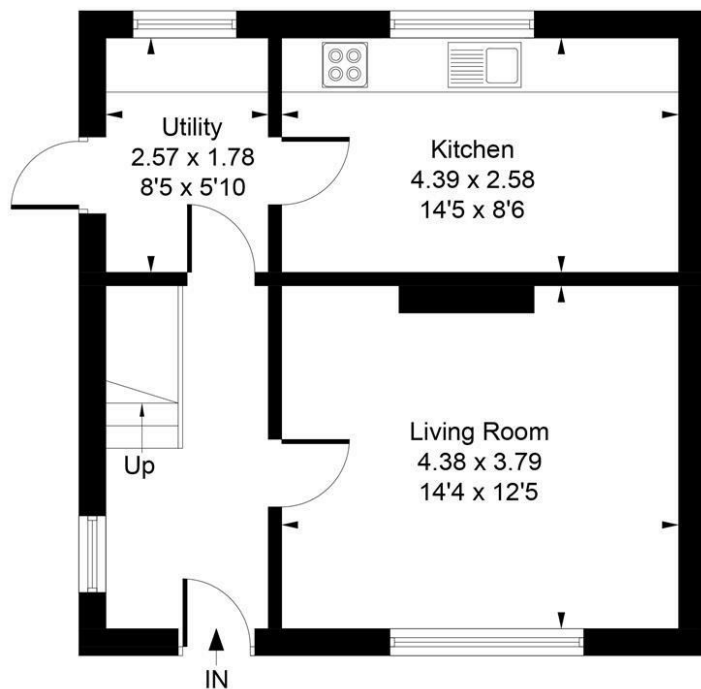
Front

Side access, concrete path, shingle area.

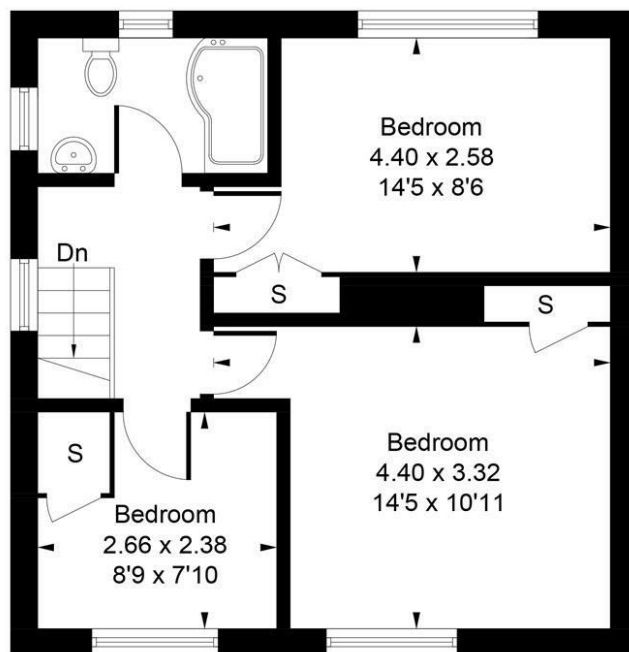


Rectory Road, Hounslow, TW4 7QE

Approximate Gross Internal Area
83.52 sq m / 899 sq ft



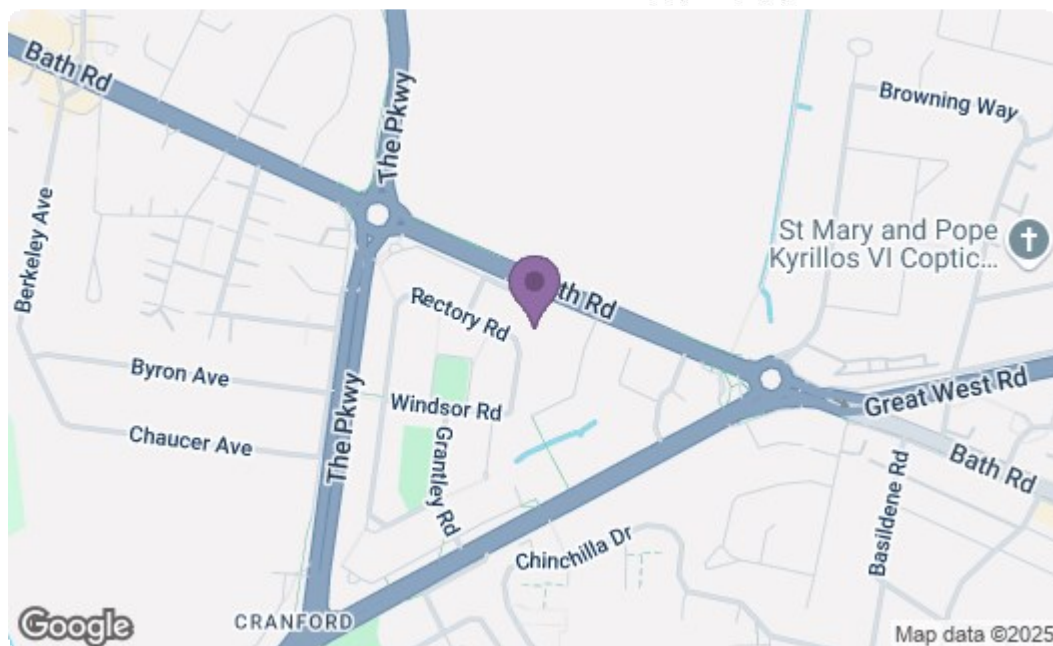
Ground Floor



First Floor

Whilst every attempt has been made to ensure the accuracy of the floor plan contained here, measurements of doors, windows, rooms and any other items are approximate and no responsibility is taken for any error, omission, or mis-statement. This plan is for illustrative purposes only and should be used as such by any prospective purchase.

Produced by jcphotographystudio.com



Energy Efficiency Rating		
	Current	Potential
Very energy efficient - lower running costs		
(92 plus) A		
(81-91) B		
(69-80) C		
(55-68) D		
(39-54) E		
(21-38) F		
(1-20) G		
Not energy efficient - higher running costs		
England & Wales EU Directive 2002/91/EC		
Environmental Impact (CO ₂) Rating		
	Current	Potential
Very environmentally friendly - lower CO ₂ emissions		
(92 plus) A		
(81-91) B		
(69-80) C		
(55-68) D		
(39-54) E		
(21-38) F		
(1-20) G		
Not environmentally friendly - higher CO ₂ emissions		
England & Wales EU Directive 2002/91/EC		

A partner of
The Guild Of Professional Estate Agents
with a network of over 700 independent estate agents

Associated Office: 121 Park Lane, Mayfair, London W1K 7AG t 020 7318 7075