



James Street, Hounslow, TW3 1SP

£510,000

A three bedroom mid-terrace house situated in this popular residential location with access to Hounslow town centre, bus garage, Hounslow East tube station and local shops. The accommodation comprises, on the ground floor, reception room with feature fireplace, kitchen/diner and cloakroom, on the first floor three bedrooms and a family bathroom. Outside rear garden, to the front driveway with off street parking. The property also benefits from double glazed windows, central heating and is offered for sale with no onward chain!

A partner of
The Guild Of Professional Estate Agents
 with a network of over 700 independent estate agents

Associated Office: 121 Park Lane, Mayfair, London W1K 7AG t 020 7318 7075

Entrance Hallway

Radiator, cupboard housing meters, doors to rooms, understairs cupboard.

Cloakroom

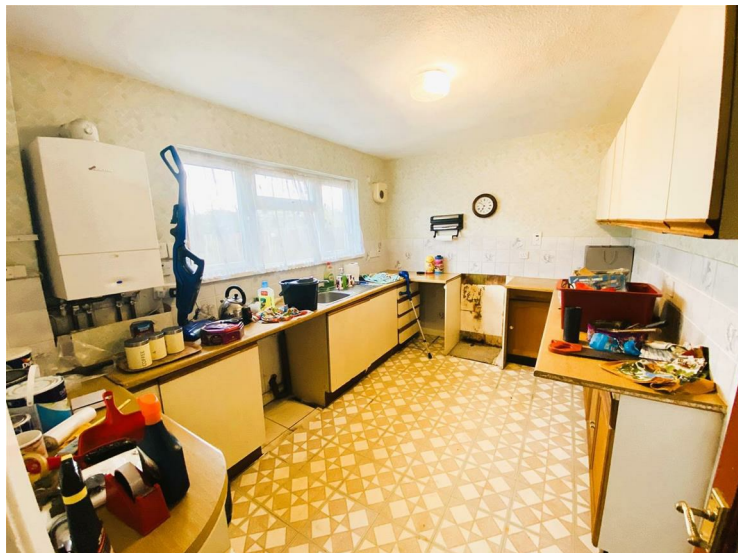
Low level w/c, wash hand basin, radiator, double glazed window.

Reception



Front aspect double glazed window, radiator, power point, feature fireplace with mantle surround.

Kitchen/Diner



Single drainer stainless steel sink unit with mixer tap and cupboard below, further range of wall and floor mounted units, space for cooker and washing machine, part tiled walls, rear aspect double glazed window, wall mounted "Worcester" boiler.

First Floor Landing

Access to loft space, doors to rooms.

Bedroom One



Front aspect double glazed window, radiator, built-in wall to wall wardrobes.

Bedroom Two



Rear aspect double glazed window, radiator, power point.

Bedroom Three



Front aspect double glazed window, radiator, power point.

Bathroom



White suite comprising panel enclosed bath, pedestal wash hand basin, low level w/c, tiled walls, radiator, rear aspect double glazed window.

Outside

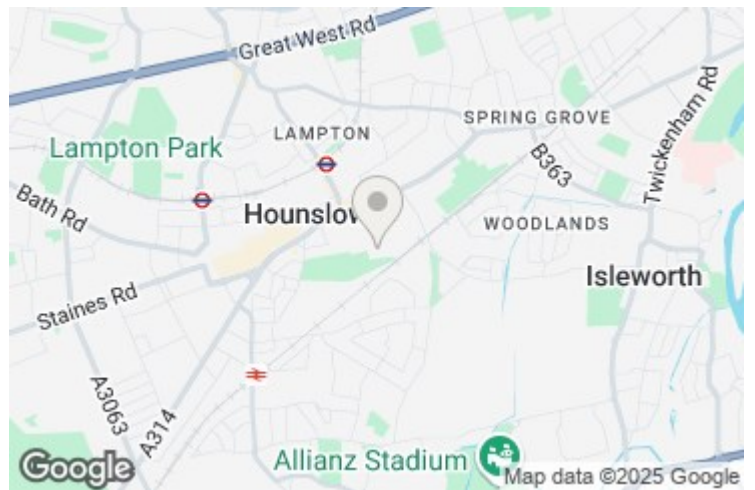
Rear Garden



Paved patio area, rest laid to lawn.

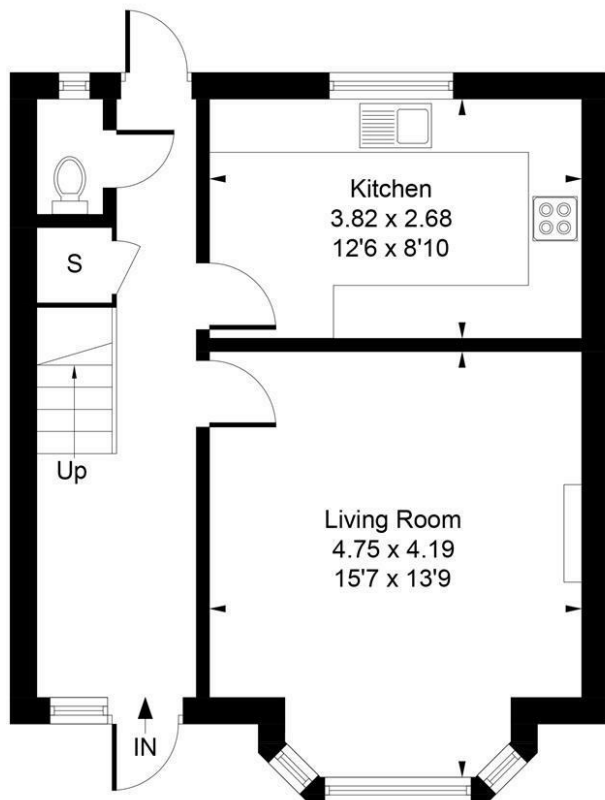
Front

Block paved driveway providing off street parking.

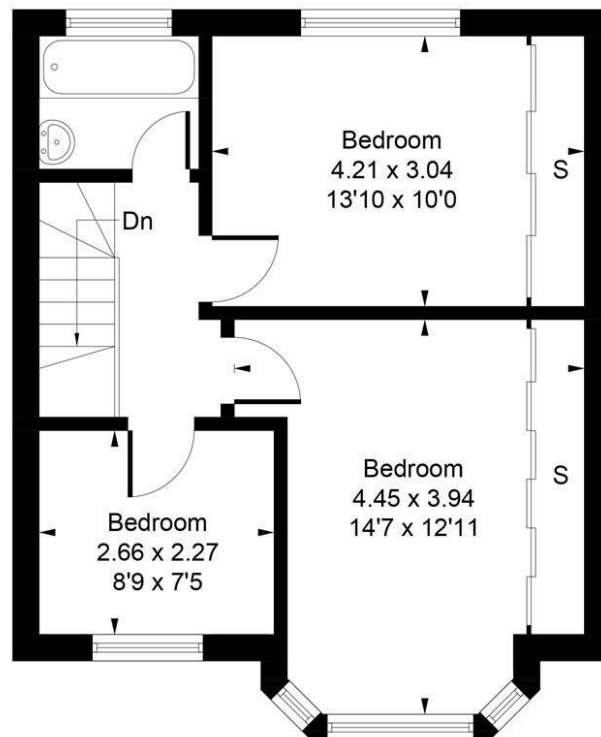


James Street, Hounslow, TW3 1SP

Approximate Gross Internal Area
87.61 sq m / 943 sq ft



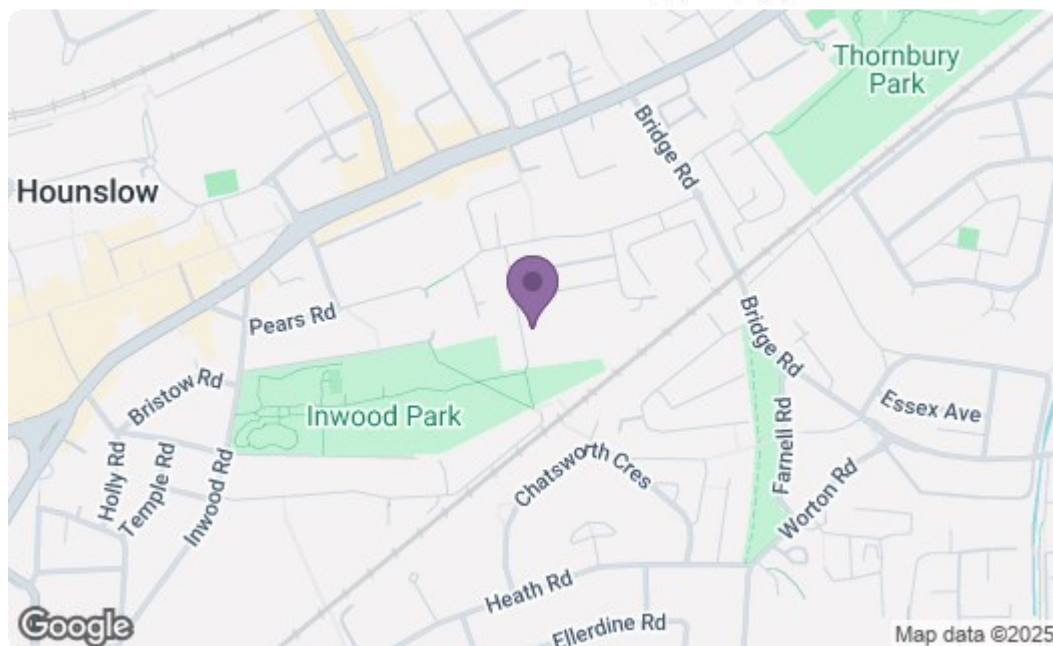
Ground Floor



First Floor

Whilst every attempt has been made to ensure the accuracy of the floor plan contained here, measurements of doors, windows, rooms and any other items are approximate and no responsibility is taken for any error, omission, or mis-statement. This plan is for illustrative purposes only and should be used as such by any prospective purchase.

Produced by jcphotographystudio.com



Energy Efficiency Rating		
	Current	Potential
Very energy efficient - lower running costs		
(92 plus) A		
(81-91) B		
(69-80) C		
(55-68) D		
(39-54) E		
(21-38) F		
(1-20) G		
Not energy efficient - higher running costs		
England & Wales EU Directive 2002/91/EC		
Environmental Impact (CO ₂) Rating		
	Current	Potential
Very environmentally friendly - lower CO ₂ emissions		
(92 plus) A		
(81-91) B		
(69-80) C		
(55-68) D		
(39-54) E		
(21-38) F		
(1-20) G		
Not environmentally friendly - higher CO ₂ emissions		
England & Wales EU Directive 2002/91/EC		

A partner of
The Guild Of Professional Estate Agents
with a network of over 700 independent estate agents

Associated Office: 121 Park Lane, Mayfair, London W1K 7AG t 020 7318 7075