



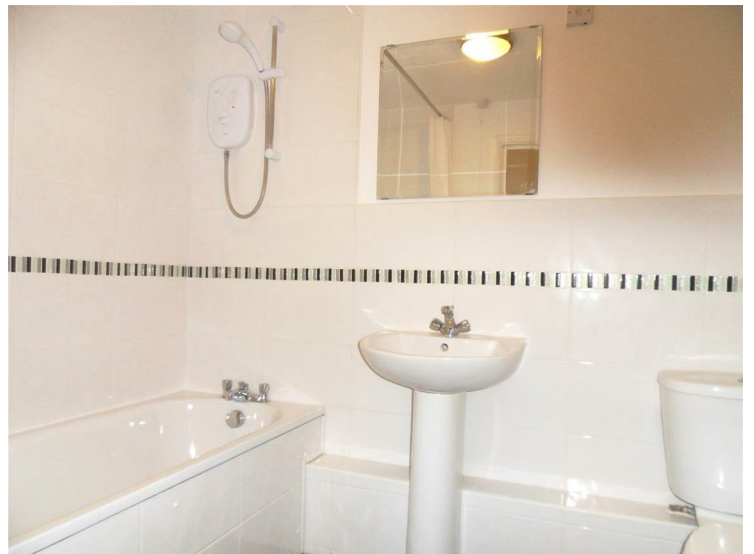
The Beeches, Lampton Road, Hounslow, TW3 4DF

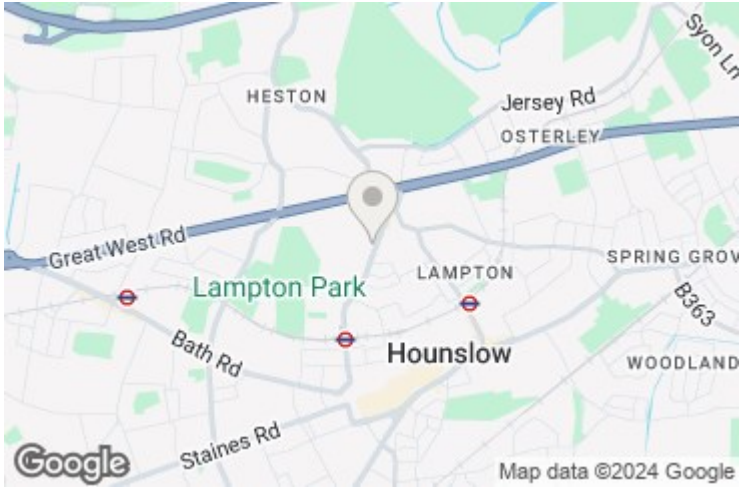
£1,350 PCM

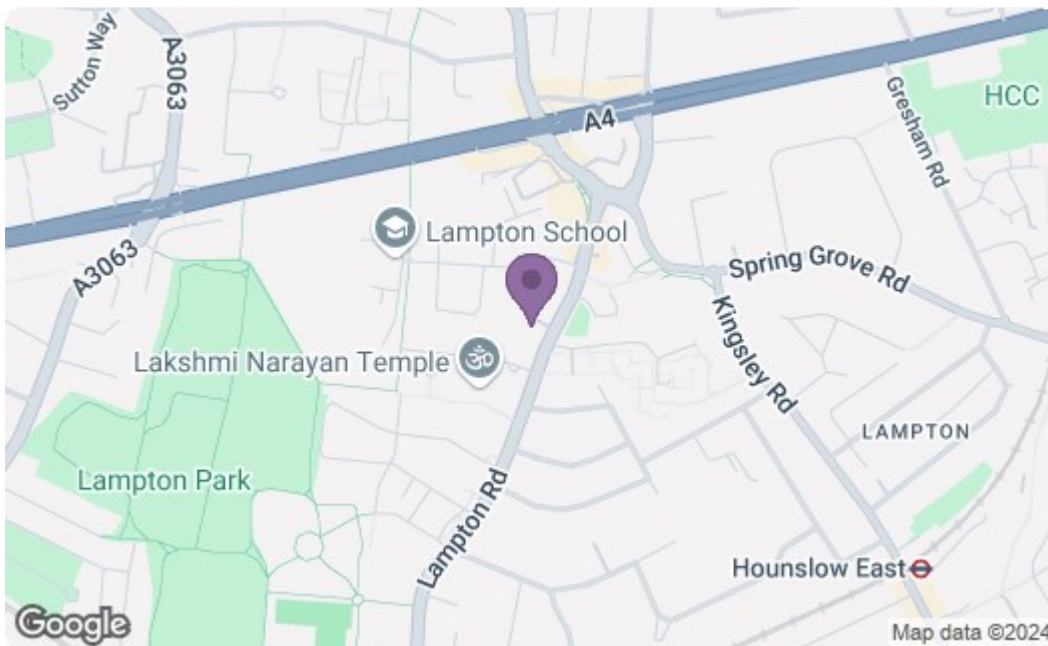
A larger than average one double bedroom third floor flat (no lift) situated in this sought after location with access to Hounslow town centre, Hounslow Central tube and further transport links. The accommodation comprises 19ft lounge, 16ft bedroom, modern kitchen and modern bathroom. Benefits include entry phone system, laminate flooring, loft storage space, communal gardens and allocated parking space. Offered on a furnished basis and is available from 19th October.

A partner of
The Guild Of Professional Estate Agents
with a network of over 700 independent estate agents

Associated Office: 121 Park Lane, Mayfair, London W1K 7AG t 020 7318 7075







Energy Efficiency Rating		Current	Potential
Very energy efficient - lower running costs			
(92 plus) A			
(81-91) B			
(69-80) C		71	76
(55-68) D			
(39-54) E			
(21-38) F			
(1-20) G			
Not energy efficient - higher running costs			
England & Wales		EU Directive 2002/91/EC	
Environmental Impact (CO₂) Rating		Current	Potential
Very environmentally friendly - lower CO ₂ emissions			
(92 plus) A			
(81-91) B			
(69-80) C			
(55-68) D			
(39-54) E			
(21-38) F			
(1-20) G			
Not environmentally friendly - higher CO ₂ emissions			
England & Wales		EU Directive 2002/91/EC	

A partner of
The Guild Of Professional Estate Agents
 with a network of over 700 independent estate agents

Associated Office: 121 Park Lane, Mayfair, London W1K 7AG t 020 7318 7075