



## **Church Stretton Road, Hounslow, TW3 2QP**

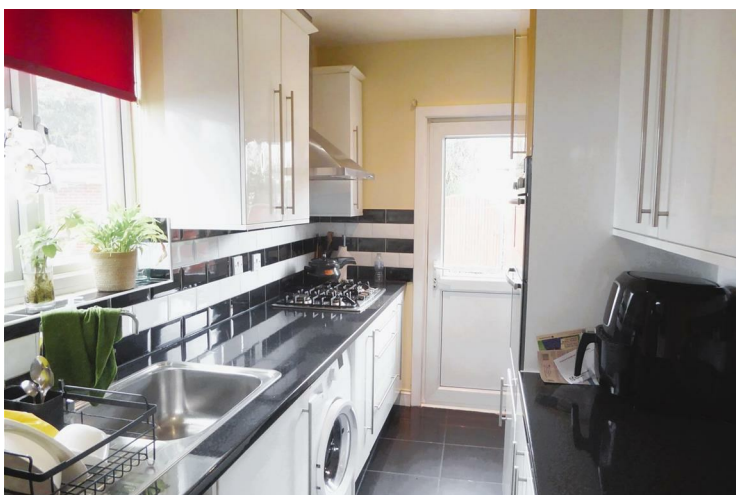
**£2,500 PCM**

A four bedroom semi-detached house situated in this popular location with access to Hounslow town centre, Hounslow mainline station and further transport links. The accommodation comprises, on the ground floor, through lounge and kitchen, on the first floor three bedrooms and family bathroom, on the second floor bedroom four with ensuite. Benefits include double glazed windows, central heating, rear garden and off street parking. The property is offered on a part furnished basis and is available 1st September.

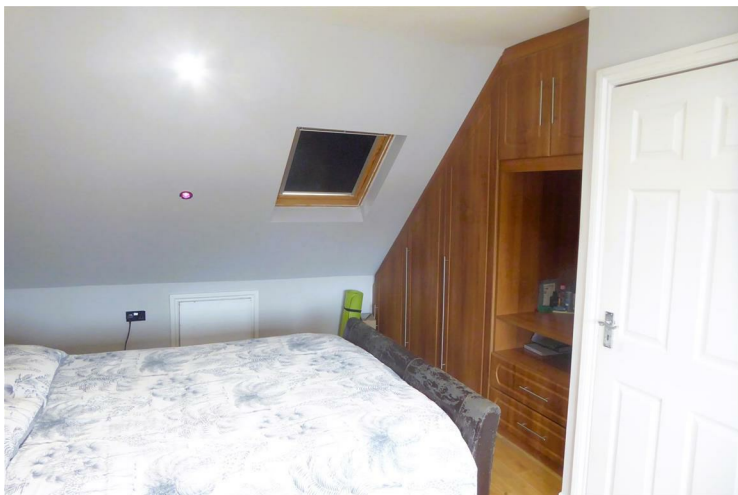
A partner of  
**The Guild Of Professional Estate Agents**  
with a network of over 700 independent estate agents

Associated Office: 121 Park Lane, Mayfair, London W1K 7AG t 020 7318 7075

















Energy Efficiency Rating		Current	Potential
Very energy efficient - lower running costs			
(92 plus) A			83
(81-91) B			
(69-80) C			
(55-68) D		58	
(39-54) E			
(21-38) F			
(1-20) G			
Not energy efficient - higher running costs			
<b>England &amp; Wales</b>		EU Directive 2002/91/EC 	
Environmental Impact (CO <sub>2</sub> ) Rating		Current	Potential
Very environmentally friendly - lower CO <sub>2</sub> emissions			
(92 plus) A			82
(81-91) B			
(69-80) C			
(55-68) D		53	
(39-54) E			
(21-38) F			
(1-20) G			
Not environmentally friendly - higher CO <sub>2</sub> emissions			
<b>England &amp; Wales</b>		EU Directive 2002/91/EC 	

A partner of  
**The Guild Of Professional Estate Agents**  
 with a network of over 700 independent estate agents

Associated Office: 121 Park Lane, Mayfair, London W1K 7AG t 020 7318 7075