



### **Cromwell Road, Hounslow, TW3 3QP**

**£447,000**

A three bedroom mid-terrace house situated in Cromwell Road with access to Hounslow town centre. Bus routes, Heathland school and local shops are all in easy reach. The accommodation comprises, on the ground floor two reception rooms and kitchen, on the first floor two double bedrooms, a single bedroom and bathroom, outside front and rear gardens. The property also benefits from double glazed windows and central heating. Offered for sale with no chain!

A partner of  
**The Guild Of Professional Estate Agents**  
 with a network of over 700 independent estate agents

Associated Office: 121 Park Lane, Mayfair, London W1K 7AG t 020 7318 7075



## Entrance Hallway

Stairs to first floor.

## Reception One



Front aspect double glazed window, radiator, laminate flooring.

## Reception Two

Rear aspect double glazed window, radiator, laminate flooring.

## Kitchen



Single drainer stainless steel sink unit with mixer tap and cupboard below, further wall and floor mounted units, built-in hob and oven, space for washing machine and fridge/freezer, wall mounted boiler, side aspect double glazed window and door to garden.

## First Floor Landing

Access to loft.

## Bedroom One

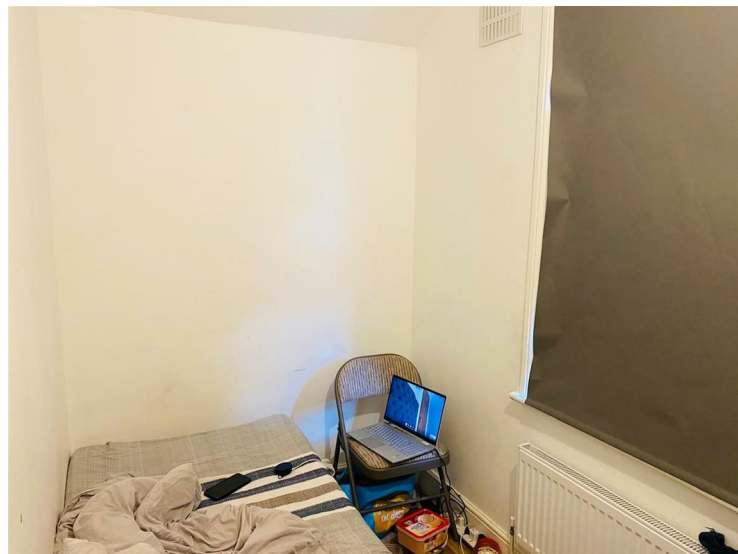


Front aspect double glazed window, radiator, laminate flooring.

## Bedroom Two

Rear aspect double glazed window.

## Bedroom Three



Rear aspect double glazed window

## Bathroom



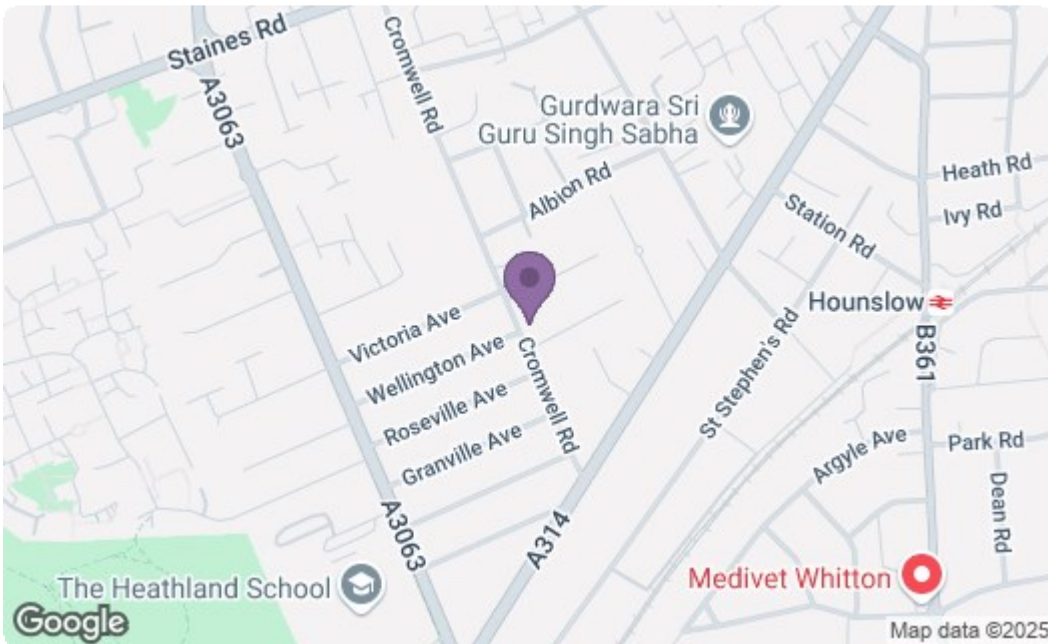
White suite comprising panel enclosed bath, low level w/c, pedestal wash hand basin.

## Outside

### Rear Garden

Concrete area, rest laid to lawn.





| Energy Efficiency Rating  |         |           |
|---|---------|-----------|
|   | Current | Potential |
| Very energy efficient - lower running costs                     |         |           |
| (92 plus) <b>A</b>  |         |           |
| (81-91) <b>B</b>  |         |           |
| (69-80) <b>C</b>  |         |           |
| (55-68) <b>D</b>  |         |           |
| (39-54) <b>E</b>  |         |           |
| (21-38) <b>F</b>  |         |           |
| (1-20) <b>G</b>   |         |           |
| Not energy efficient - higher running costs                     |         |           |
| <b>England &amp; Wales</b> EU Directive 2002/91/EC              |         |           |
| Environmental Impact (CO <sub>2</sub> ) Rating                  |         |           |
|   | Current | Potential |
| Very environmentally friendly - lower CO <sub>2</sub> emissions |         |           |
| (92 plus) <b>A</b>  |         |           |
| (81-91) <b>B</b>  |         |           |
| (69-80) <b>C</b>  |         |           |
| (55-68) <b>D</b>  |         |           |
| (39-54) <b>E</b>  |         |           |
| (21-38) <b>F</b>  |         |           |
| (1-20) <b>G</b>   |         |           |
| Not environmentally friendly - higher CO <sub>2</sub> emissions |         |           |
| <b>England &amp; Wales</b> EU Directive 2002/91/EC              |         |           |

A partner of  
**The Guild Of Professional Estate Agents**  
 with a network of over 700 independent estate agents

Associated Office: 121 Park Lane, Mayfair, London W1K 7AG t 020 7318 7075