



Martindale Road, Hounslow, TW4 7EZ

£419,950

A well presented two/three bedroom mid-terraced house situated in this popular residential location within walking distance to Hounslow West tube station, shopping centre, bus links and local shops. The accommodation comprises, on the ground floor, lounge, kitchen breakfast room and modern bathroom, on the first floor two bright and spacious bedrooms, bedroom two with staircase leading to a loft room with "Velux" windows, outside front and rear gardens. The property also benefits from double glazed windows and central heating and an internal viewing is strongly recommended.

A partner of
The Guild Of Professional Estate Agents
 with a network of over 700 independent estate agents

Associated Office: 121 Park Lane, Mayfair, London W1K 7AG t 020 7318 7075

Lounge

Front aspect double glazed window, radiator, power point, feature fireplace (currently not being used), through to...

Kitchen/Breakfast Room



1 1/2 bowl single drainer sink unit with mixer tap and cupboard below, further wall and floor mounted units, space for cooker, washing machine and fridge/freezer, part tiled walls, power point, wall mounted "Worcester" boiler, rear aspect double glazed window, stairs to first floor, through to...



Inner Hallway

Door to garden, door to...

Re-Fitted Modern Bathroom



Modern white suite comprising panel enclosed bath with mixer tap and shower attachment, wash hand basin with vanity unit below, tiled walls, tiled flooring, side aspect double glazed window, heated towel rail.

Separate W/C

Low level w/c, wash hand basin with mixer taps and vanity unit below, double glazed window, tiled flooring.

First Floor Landing

Bedroom One



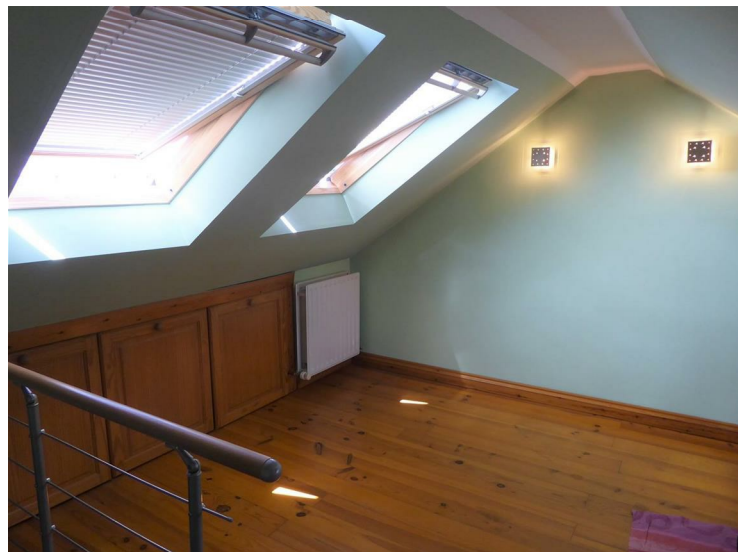
Front aspect double glazed window, radiator, exposed flooring.

Bedroom Two

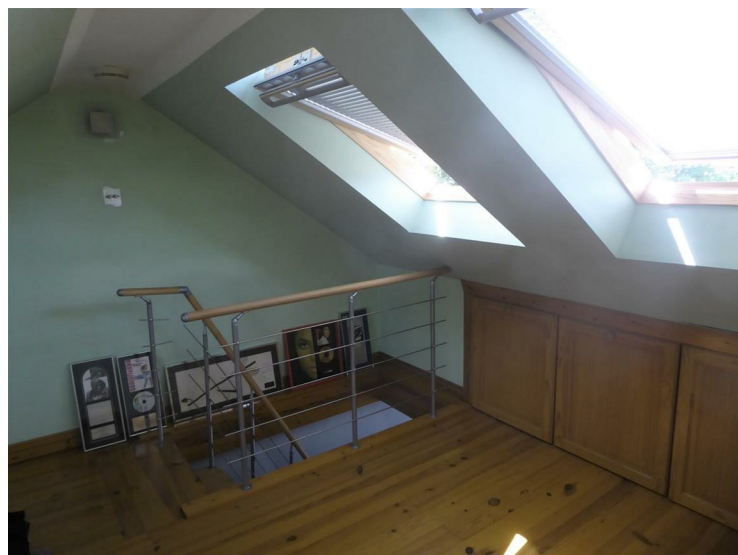


Rear aspect double glazed window, radiator, power point, exposed flooring, stairs to...

Loft Room/Study



"Velux" window, radiator, wood flooring, wall mounted lights, eaves storage.

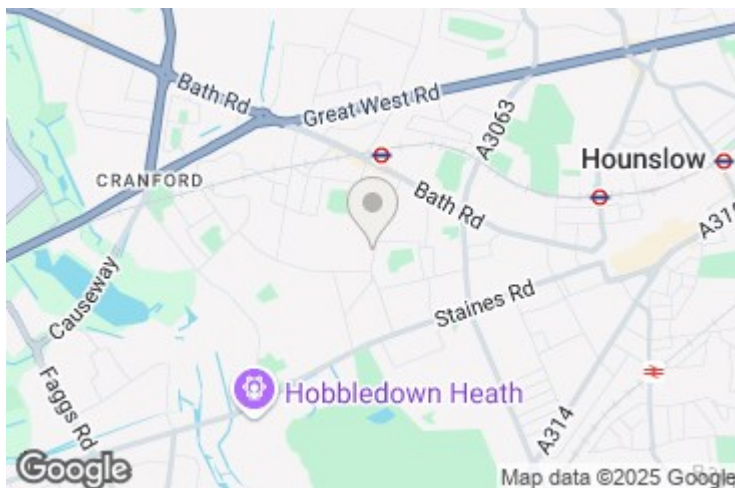


Outside

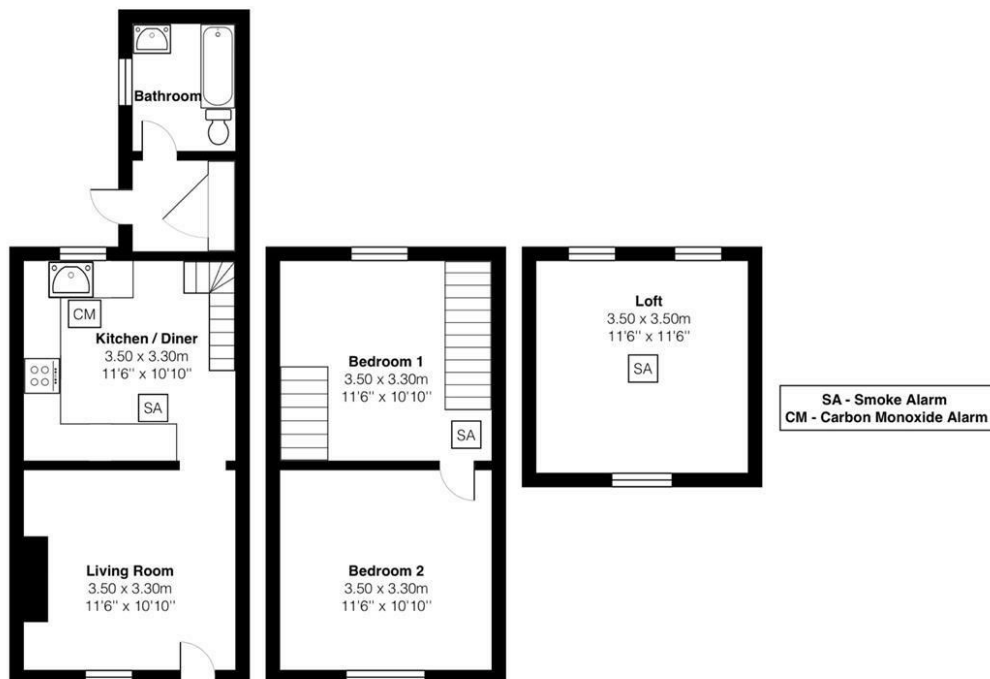
Rear Garden



Paved patio area with mature shrubs and bushes.



Martindale Road TW4 7EX



Total Area: 66.2 m² ... 713 ft²

All measurements are approximate and for display purposes only.
No liability is accepted by either the agency or Box Property Solutions Ltd as to the exact measurements of the rooms.
Box Property Solutions Ltd retains the copyright on this plan and allows agents to use it with agreed permission.



Energy Efficiency Rating		
	Current	Potential
Very energy efficient - lower running costs		
(92 plus) A		83
(81-91) B		
(69-80) C		
(55-68) D	59	
(39-54) E		
(21-38) F		
(1-20) G		
Not energy efficient - higher running costs		
England & Wales EU Directive 2002/91/EC		
Environmental Impact (CO ₂) Rating		
	Current	Potential
Very environmentally friendly - lower CO ₂ emissions		
(92 plus) A		
(81-91) B		
(69-80) C		
(55-68) D		
(39-54) E		
(21-38) F		
(1-20) G		
Not environmentally friendly - higher CO ₂ emissions		
England & Wales EU Directive 2002/91/EC		

A partner of
The Guild Of Professional Estate Agents
with a network of over 700 independent estate agents

Associated Office: 121 Park Lane, Mayfair, London W1K 7AG t 020 7318 7075